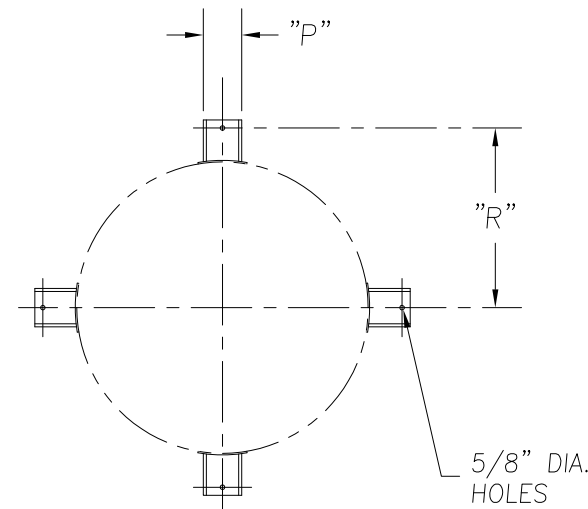
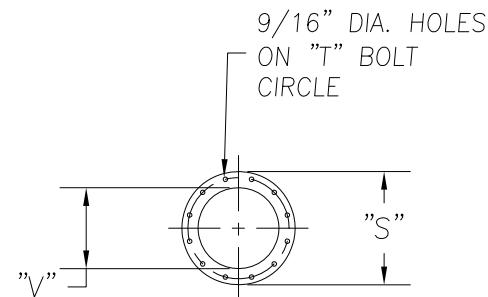


PLAN VIEW



MOUNTING PLAN



DISCHARGE FLANGE

"HE" SERIES CYCLONE MODELS HE21 TO HE47

STANDARD FEATURES

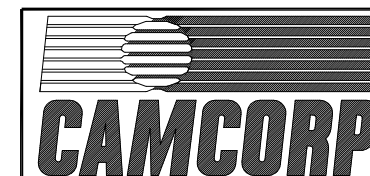
1. ALL WELDED 12GA. OR 10GA. CONSTRUCTION
2. TOOL-LESS CLEAN-OUT PORT
3. MATERIAL: CARBON STEEL, STAINLESS STEEL, ALUMINUM
4. PAINT: STANDARD IS WHITE OR ENVIROGREEN INDUSTRIAL ENAMEL

OPTIONAL FEATURES

1. STRUCTURAL SUPPORTS
2. FLANGED INLET AND OUTLET
3. FLANGED CONSTRUCTION
4. WEAR LINER

CAMCORP MODELS HE21 TO HE47

MODEL NUMBER	CFM RANGE	DIMENSIONS (INCHES)																				EST. INSTALLED WT.		
		A	B	C	D	E	F	G	H	J	K	L	M	N	P	R	S	T	V	W	X		Y	Z
HE21	2,188-2,500	21	95	24 1/2	30	14 1/2	26	10	19	5	10 1/2	12 1/2	11 1/2	73	4	14 3/4	12 1/2	11	8	6	9 1/2	15	90 1/2	341
HE24	2,844-3,250	24	112	31	39	16	26	11	21 1/2	5 1/2	12	14	13	87	4	16 1/4	12 1/2	11	8	6 1/2	11	18	106 1/2	421
HE27	3,524-4,028	27	120 1/2	26	40	17	37 1/2	13	24	6	13 1/2	15 1/2	14 1/2	93 1/2	4	17 3/4	14 1/2	12 5/8	10	7	12	20	114 1/2	539
HE30	4,278-4,889	30	132	32 1/2	44	18	37 1/2	14	26 1/2	6 1/2	15	17	16	103	4	19 1/4	14 1/2	12 5/8	10	8	13	22	125 1/2	635
HE33	5,390-6,160	33	144 1/2	39	48	20	37 1/2	16	30	7 1/2	16	18 1/2	17 1/2	112 1/2	4	20 3/4	14 1/2	12 5/8	10	9	15	24	137	751
HE36	6,650-7,600	36	153 1/2	43 1/2	51	21 1/2	37 1/2	17	33	8	18	20	19	119	4	22 1/4	14 1/2	12 5/8	10	11	16 1/2	25 1/2	145	837
HE39	7,700-8,800	39	174 1/2	48	54	23	49 1/2	19	35 1/2	9	19 1/2	21 1/2	20 1/2	138	4	23 3/4	14 1/2	12 5/8	10	12	18	27	165 1/2	1,026
HE43	9,450-10,800	43	188	54 1/2	59	25	49 1/2	21	39 1/2	10	21	23 1/2	22 1/2	148	4	25 3/4	14 1/2	12 5/8	10	13	20	30	178	1,215
HE47	11,025-12,600	47	202 1/2	61	66	26	49 1/2	23	42 1/2	10 1/2	23 1/2	25 1/2	24 1/2	160	4	27 3/4	14 1/2	12 5/8	10	14	21	33	192	1,387



9732 PFLUMM, LENEXA, KS 66215

PHONE: 913-831-0740 • FAX: 913-831-9271

TITLE: "HE" SERIES CYCLONE MODELS HE21 TO HE47

DATE: 08/09/99 DRN BY: DOTY DWG. NO.: CYCLONE-HE P.S.: 24-00 REV.: