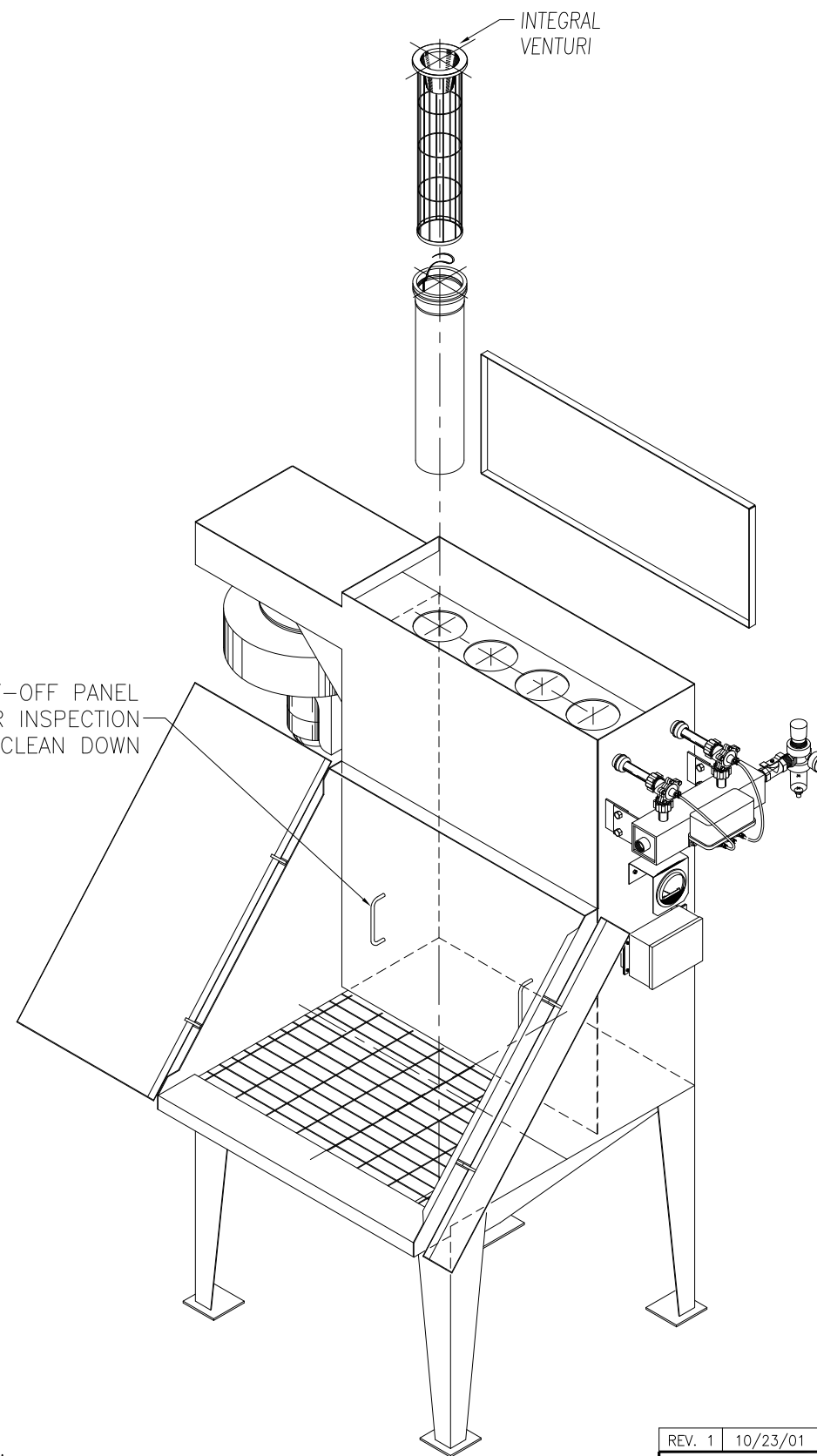
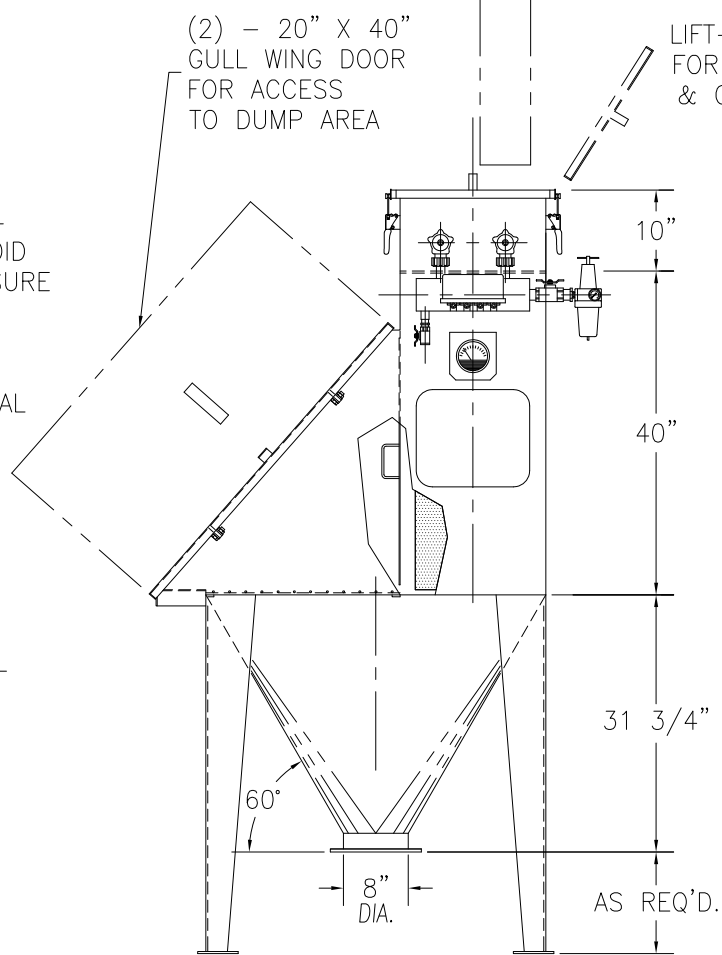


(8) - 6" DIA. X 40" LG. 16 OZ. POLYESTER FILTER BAGS & CAGES



STANDARD FEATURES:

- \* SEQUENTIAL TIMER MOUNTED IN A NEMA 4 ENCLOSURE
- \* MAGNEHELIC GAUGE MOUNTED IN ENCLOSURE
- \* NO TOOL ACCESS
- \* NO TOOL REMOVAL OF FILTER ELEMENTS
- \* AIR FILTER REGULATOR W/0-100 PSIG PRESSURE GAUGE
- \* COMPRESSED AIR INLET ISOLATION VALVE
- \* 100% SPUN BOND POLYESTER CARTRIDGE ELEMENTS
- \* SIDE MOUNT FAN


OPTIONAL FEATURES:

- \* REMOVABLE MESH SCREEN
- \* VIBRATING MESH SCREEN
- \* MAGNETIC GRATE
- \* LIMIT SWITCH
- \* SWING AWAY DOOR
- \* TOP OR SIDE ACCESS TO FILTER ELEMENTS
- \* HIGH EFFICIENCY CARTRIDGES
- \* STRUCTURAL SUPPORT LEGS
- \* EXPLOSION PROOF CONTROLS
- \* MIXER OR BIN MOUNT

HOPPER/DISCHARGE OPTIONS PER APPLICATION REQUIREMENTS

MODEL BD40-BGD BAG DUMP STATION

- \* FILTERED DESIGN
- \* FILTER BAGS
- \* GULLWING DOORS

REV. 1	10/23/01	ADDED NOTES			
 <b>CAMCORP</b> <small>9732 PFLUMM, LENEXA, KS 66215</small>			<small>PHONE: 913-831-0740 • FAX: 913-831-9271</small>		
TITLE:			GULL WING ACCESS DOORS BAG FILTRATION BAG DUMP		
DATE:	DRN BY:	DWG. NO.:	P.S.:	REV.:	
09/01/99	DOTY	BAGDUMP3	24-00	#1	