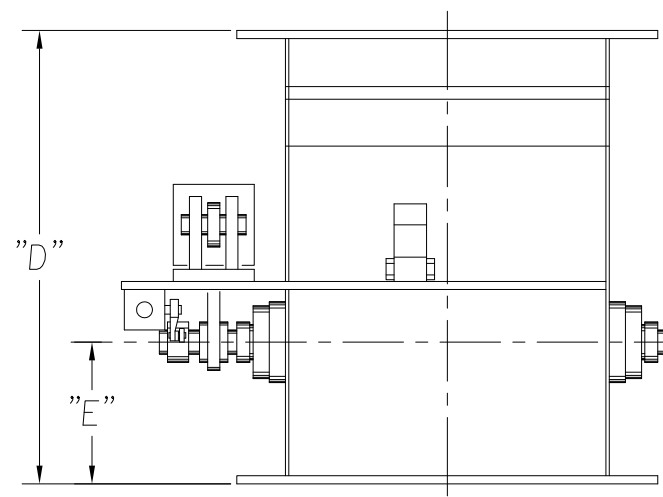
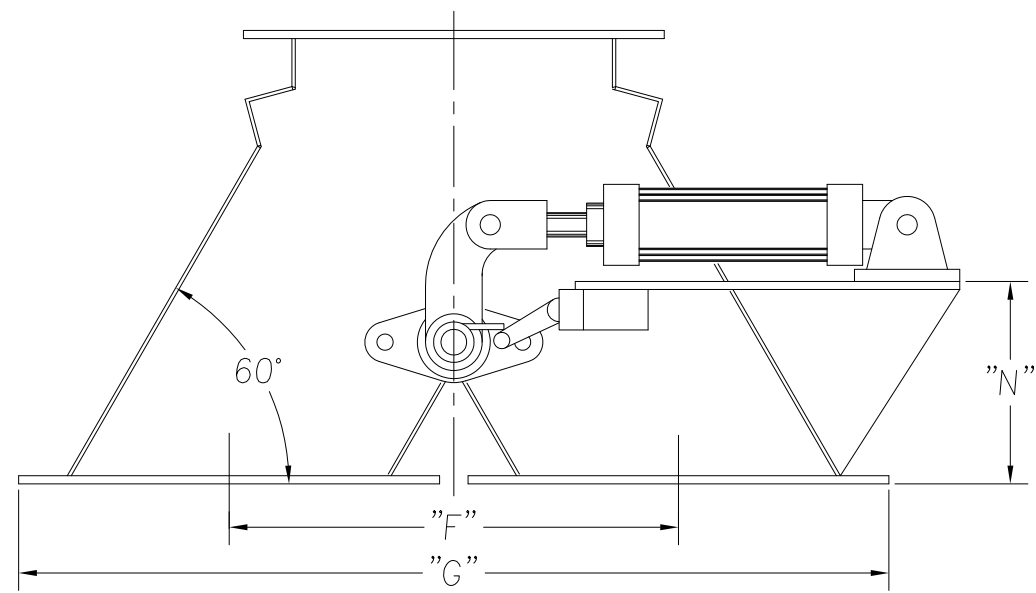


- STANDARD FEATURES
1. ALL WELDED HEAVY-DUTY CONSTRUCTION
 2. STANDARD MATERIALS OF CONSTRUCTION: CARBON STEEL, STAINLESS STEEL, ALUMINUM
 3. STANDARD ELECTRICALS
 4. PAINT: STANDARD IS, ON CARBON STEEL, WHITE OR ENVIROGREEN INDUSTRIAL ENAMEL



A-VALVE FLAP
DIVERTER VALVE
(6" THRU 15")

CAMCORP AIR OPERATED 2-WAY A-VALVES															
MODEL SIZE	DIMENSIONS (INCHES)														EST. INSTALLED WT.
	A	B	C	D	E	F	G	H	J	K	L	M	N	P	
6"	6	9	12	10	4 3/8	10	19	3/8	4 1/8	23 1/2	-	-	5	7/16	56
8"	8	11	14	12	4 3/8	12	23	3/4	4 3/4	25 1/2	-	-	5 1/8	7/16	70
10"	10	13	16	14	4 3/8	14	27	1/2	6	29	-	-	6 1/4	9/16	92
12"	12	16	19	17	5 3/8	17	33	1	-	32	4 11/16	4 5/8	7 1/4	9/16	123
15"	15	19	23	20	5 3/8	20	39	1	-	38	5 1/2	6	8	9/16	168

CAMCORP
9732 PFLUMM, LENEXA, KS 66245 PHONE: 913-831-0740 • FAX: 913-831-9271

TITLE: A-VALVES (FLAP DIVERTER VALVES)

DATE: 8/18/99 DRN BY: DOTY DWG. NO.: A-VALVE P.S.: 6-00 REV.: