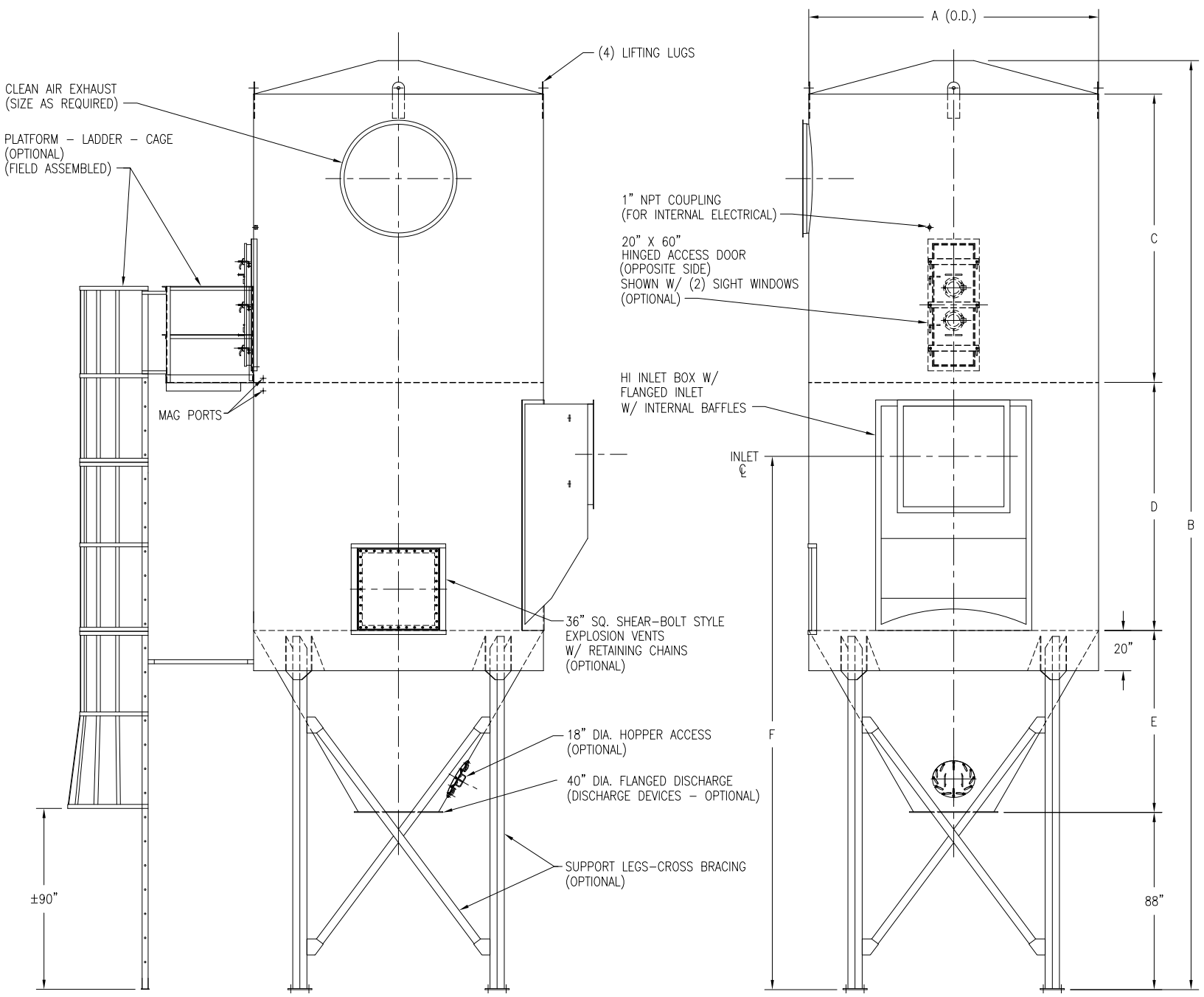


NUMEROUS ORIENTATIONS - CONFIGURATIONS AVAILABLE



MODEL 6SWF48 THRU 12SWF504																	
MODEL NUMBER	FILTER MEDIA (SQ. FT.)	QUAN. OF BAGS	BAG LENGTH (IN FT.)	MAT'L OF CONST.	DIMENSIONS (INCHES)								REVERSE AIR FAN H.P.	# OF EXPLOSION VENTS	EST. INSTALLED WT./LBS.		
					A	B	C	D	E	F	G	H					
6SWF48	348	48	6	12 GA.	60	281 9/16	95 1/4	75 1/4	17 11/16	164 15/16	16	40 1/8	5 HP	1 *	4884		
8SWF48	464		8			329 9/16	119 1/4	99 1/4					187 15/16	18	5 HP	1 *	5468
10SWF48	581		10			377 9/16	143 1/4	123 1/4					210 15/16	20	5 HP	1 *	6054
6SWF80	580	80	6	12 GA.	72	293 9/16	95 1/4	75 1/4	28 1/16	173 5/16	20	48 5/8	5 HP	1	5408		
8SWF80	774		8			341 9/16	119 1/4	99 1/4					196 5/16	22	5 HP	1	6097
10SWF80	968		10			389 9/16	143 1/4	123 1/4					219 5/16	24	5 HP	1	6790
8SWF112	1084	112	8	10 GA.	84	353 9/16	119 1/4	99 1/4	38 1/2	204 1/4	27	57 1/16	5 HP	1	7461		
10SWF112	1355		10			401 9/16	143 1/4	123 1/4					226 3/4	30	7.5 HP	1	8384
12SWF112	1626		12			425 9/16	143 1/4	147 1/4					249 1/4	33	7.5 HP	1	9056
8SWF152	1471	152	8	10 GA.	96	365 9/16	119 1/4	99 1/4	48 7/8	213 1/8	30	65 9/16	7.5 HP	1	8506		
10SWF152	1839		10			413 9/16	143 1/4	123 1/4					235 5/8	33	7.5 HP	2	9612
12SWF152	2207		12			437 9/16	143 1/4	147 1/4					258 1/8	36	10 HP	2	10382
8SWF200	1936	200	8	10 GA.	108	377 9/16	119 1/4	99 1/4	59 1/4	222	33	72 9/16	7.5 HP	2	10324		
10SWF200	2420		10			425 9/16	143 1/4	123 1/4					243 1/2	38	10 HP	2	11354
12SWF200	2904		12			449 9/16	143 1/4	147 1/4					265 1/2	42	10 HP	2	12263
8SWF256	2478	256	8	10 GA.	120	389 9/16	119 1/4	99 1/4	69 11/16	229 15/16	38	81 1/16	7.5 HP	2	11485		
10SWF256	3097		10			437 9/16	143 1/4	123 1/4					251 15/16	42	10 HP	2	12856
12SWF256	3717		12			461 9/16	143 1/4	147 1/4					273 15/16	46	15 HP	3	13858
8SWF312	3020	312	8	10 GA.	132	401 9/16	119 1/4	99 1/4	80 1/16	238 5/16	42	89 9/16	10 HP	2	12908		
10SWF312	3775		10			449 9/16	143 1/4	123 1/4					260 5/16	46	10 HP	3	14406
12SWF312	4530		12			473 9/16	143 1/4	147 1/4					282 5/16	50	15 HP	3	15565
8SWF368	3562	368	8	10 GA.	144	413 9/16	119 1/4	99 1/4	90 7/16	246 11/16	46	98 1/16	10 HP	3	14275		
10SWF368	4452		10			461 9/16	143 1/4	123 1/4					268 11/16	50	15 HP	3	15932
12SWF368	5343		12			485 9/16	143 1/4	147 1/4					290 11/16	54	15 HP	4	17216
8SWF432	4182	432	8	3/16" R	156	425 9/16	119 1/4	99 1/4	100 13/16	256 1/16	48	106 7/16	10 HP	3	18219		
10SWF432	5227		10			473 9/16	143 1/4	123 1/4					277 1/16	54	15 HP	4	20369
12SWF432	6273		12			497 9/16	143 1/4	147 1/4					298 1/16	60	20 HP	4	22120
8SWF504	4879	504	8	3/16" R	168	437 9/16	119 1/4	99 1/4	111 1/4	263 1/2	54	114 15/16	15 HP	4	20028		
10SWF504	6098		10			485 9/16	143 1/4	123 1/4					284 1/2	60	20 HP	4	22446
12SWF504	7318		12			509 9/16	143 1/4	147 1/4					306 1/2	64	20 HP	5	24252

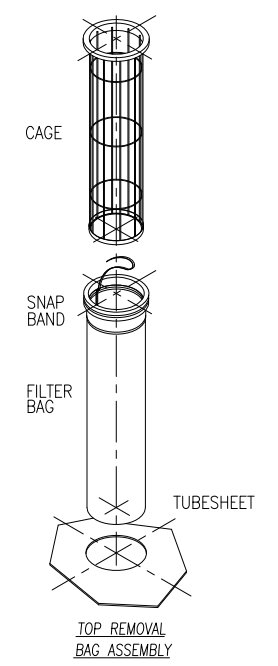
\* 24" SQUARE EXPLOSION VENT(S) ON SWF-48 MODELS

STANDARD FEATURES

1. ALL WELDED HEAVY-DUTY CONSTRUCTION
2. PRESSURE/VACUUM RATING: +/-20"W.C.
3. STANDARD MATERIALS OF CONSTRUCTION: CARBON STEEL, STAINLESS STEEL, ALUMINUM
4. PAINT IS STANDARD WHITE OR ENVIROGREEN INDUSTRIAL ENAMEL
5. STANDARD NUMBER OF EXPLOSION VENTS PROVIDE A 65 : 1 VENT RATIO
6. 1/2 HP MOTOR ROTATES INTERNAL CLEANING MECHANISM

OPTIONAL FEATURES

1. INTERMEDIATE SERVICE PLATFORMS
2. EXPLOSION VENTING / RATIOS
3. EXPLOSION-PROOF ELECTRICALS
4. HIGHER PRESSURE/VACUUM RATING
5. BIN VENT STYLE
6. WIDE BAG SPACING



REV	DRAWING STATUS	BY	DATE
9732 PFLUMM, LENEXA, KS 66215 PHONE: 913-831-0740 FAX: 913-831-9271			
This drawing and the solutions/designs are the property of CAMCORP, Inc. and are furnished only for informational purposes on a confidential basis. Reproduction, publishing, or other disclosures are on a "NEED TO KNOW" basis only. Any other reproduction requires written authorization by a corporate officer.			
TITLE: REVERSE AIR DUST COLLECTOR WITH HI-ENTRY INLET			
DATE:	DRAWN:	DRAWING NUMBER:	REVISION:
9/13/05	AJH	SWF-HI INLET	