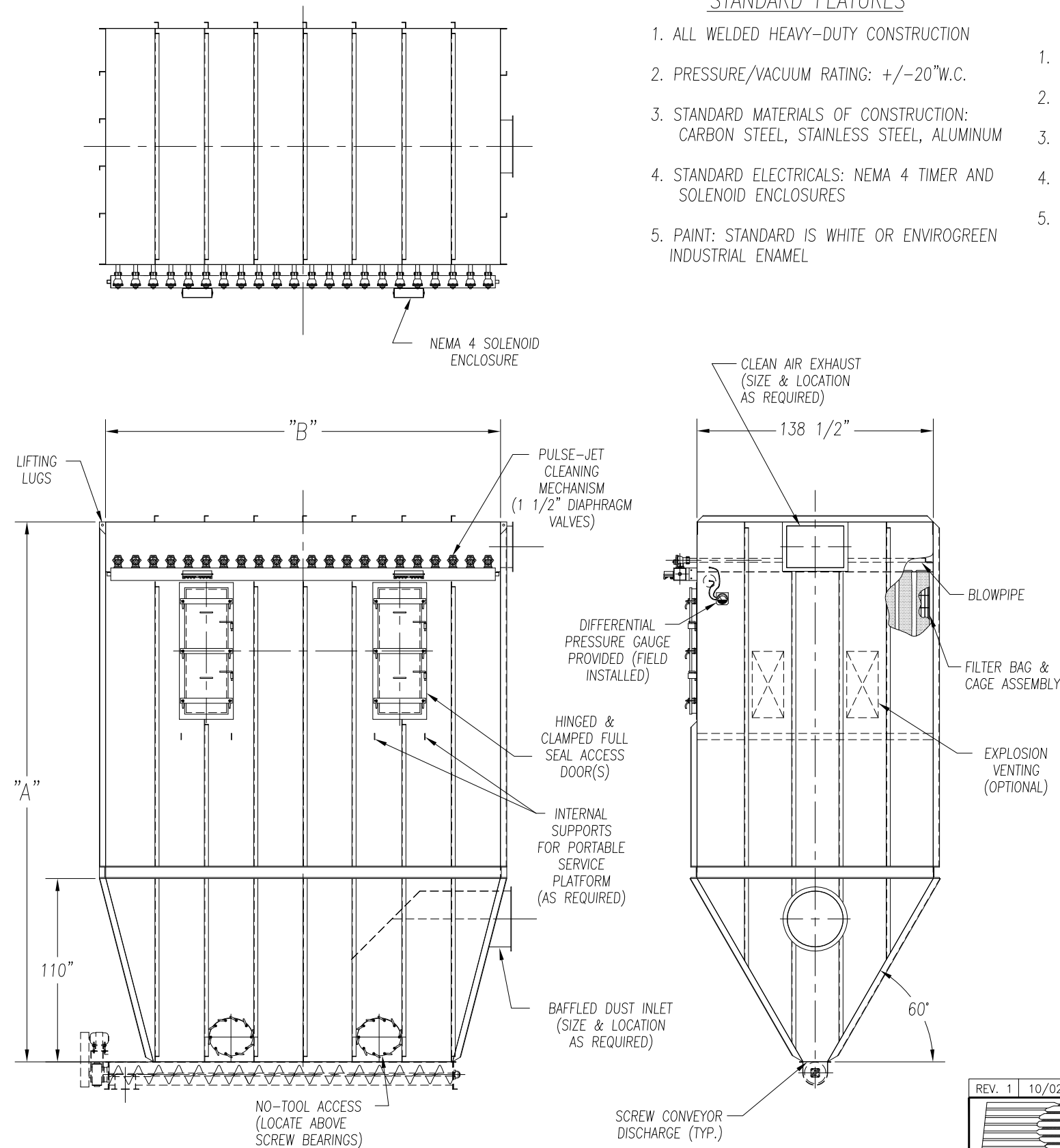


CAMCORP MODELS 17BH8X272 TO 31BH12X496

MODEL NUMBER	FILTER MEDIA (SQ. FT.)	QUAN. OF BAGS	BAG LENGTH (IN. FT.)	DIMENSIONS (INCHES)		EST. INSTALLED WT.
				A	B	
17BH8X272	3482	272	8	234	147	10716
17BH10X272	4352		10	258		12518
17BH12X272	5222		12	282		13643
18BH8X288	3686	288	8	234	155 1/2	11212
18BH10X288	4608		10	258		13070
18BH12X288	5530		12	282		14249
19BH8X304	3891	304	8	234	164	11677
19BH10X304	4864		10	258		13591
19BH12X304	5837		12	282		14807
20BH8X320	4096	320	8	234	172 1/2	12198
20BH10X320	5120		10	258		14219
20BH12X320	6144		12	282		15490
21BH8X336	4301	336	8	234	181	12,709
21BH10X336	5376		10	258		14785
21BH12X336	6451		12	282		16109
22BH8X352	4506	352	8	234	189 1/2	13179
22BH10X352	5632		10	258		15311
22BH12X352	6758		12	282		17350
23BH8X368	4710	368	8	234	198	13695
23BH10X368	5888		10	258		15934
23BH12X368	7066		12	282		17350
24BH8X384	4915	384	8	234	206 1/2	14191
24BH10X384	6144		10	258		16486
24BH12X384	7373		12	282		17955
25BH8X400	5120	400	8	234	215	14656
25BH10X400	6400		10	258		17007
25BH12X400	7680		12	282		18514
26BH8X416	5325	416	8	234	223 1/2	15182
26BH10X416	6656		10	258		17639
26BH12X416	7987		12	282		19201
27BH8X432	5530	432	8	234	232	15678
27BH10X432	6912		10	258		18192
27BH12X432	8294		12	282		19806
28BH8X448	5734	448	8	234	240 1/2	16199
28BH10X448	7168		10	258		18819
28BH12X448	8602		12	282		20489
29BH8X464	5939	464	8	234	249	16664
29BH10X464	7424		10	258		19340
29BH12X464	8909		12	282		21047
30BH8X480	6144	480	8	234	257 1/2	17161
30BH10X480	7680		10	258		19892
30BH12X480	9216		12	282		21653
31BH8X496	6349	496	8	234	266	17629
31BH10X496	7936		10	258		20467
31BH12X496	9523		12	282		22282

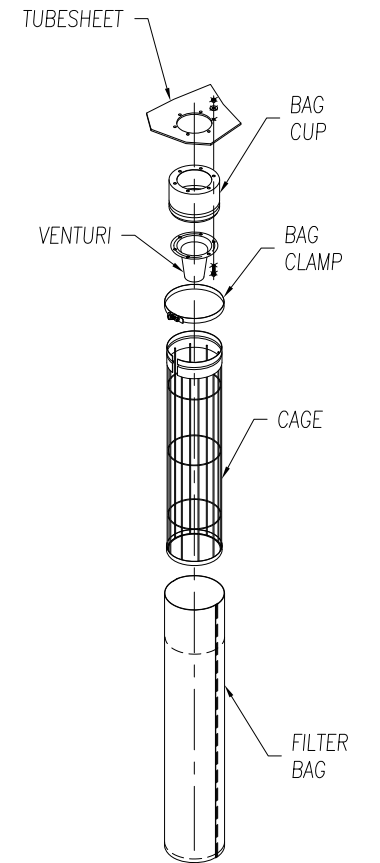


STANDARD FEATURES

1. ALL WELDED HEAVY-DUTY CONSTRUCTION
2. PRESSURE/VACUUM RATING: +/-20"W.C.
3. STANDARD MATERIALS OF CONSTRUCTION: CARBON STEEL, STAINLESS STEEL, ALUMINUM
4. STANDARD ELECTRICALS: NEMA 4 TIMER AND SOLENOID ENCLOSURES
5. PAINT: STANDARD IS WHITE OR ENVIROGREEN INDUSTRIAL ENAMEL

OPTIONAL FEATURES

1. STRUCTURAL SUPPORTS
2. SERVICE PLATFORMS
3. EXPLOSION VENTING
4. EXPLOSION-PROOF ELECTRICALS
5. HIGHER PRESSURE/VACUUM RATING



BOTTOM REMOVAL BAG ASSEMBLY

BOTTOM REMOVAL BAG DUST COLLECTOR ( 272 TO 496 BAGS )

REV. 1	10/02/01	ADDED SCREW CONVEYOR, CHG'D. TITLE
 9732 PFLUMM, LENEXA, KS 66215      PHONE: 913-831-0740 • FAX: 913-831-9271		
TITLE: BOTTOM REMOVAL BAG DUST COLLECTORS MODEL 17BH8X272 TO 31BH12X496 (272 TO 496 BAGS)		
DATE: 08/17/99	DRN BY: DOTY	DWG. NO.: CAT-RBHOP
P.S.: 64-00	REV.: #1	