

CAMCORP MODELS 8BH8X64 TO 16BH12X256

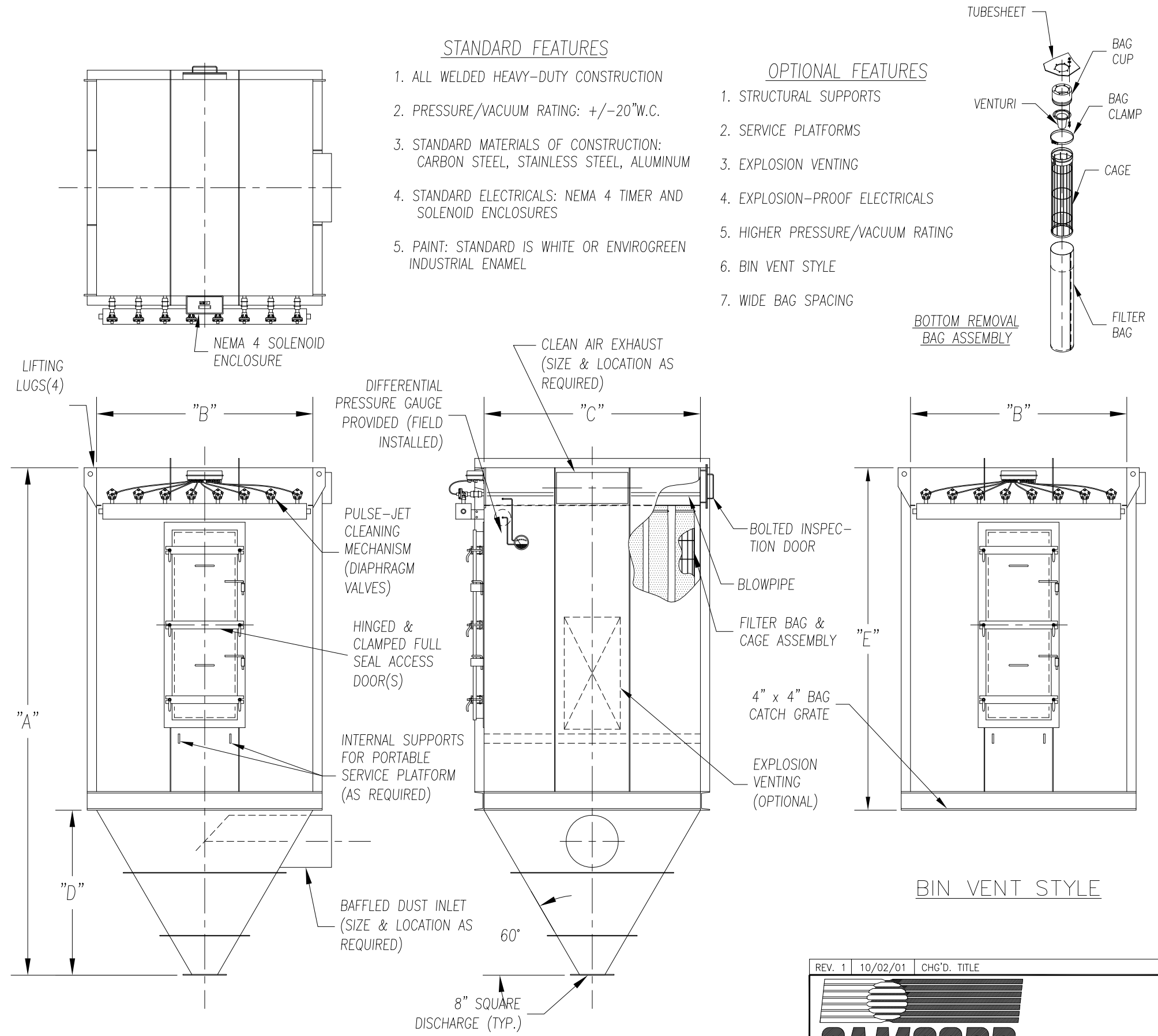
MODEL NUMBER	FILTER MEDIA (SQ. FT.)	QUAN. OF BAGS	BAG LENGTH (IN FT.)	DIMENSIONS (INCHES)					EST. INSTALLED WT.
				A	B	C	D	E	
8BH8X64	819	64	8	171	71 1/2	71 1/2	55	116	2857
8BH10X64	1024		10	195				140	3224
8BH12X64	1229		12	219				164	3847
8BH8X72	922	72	8	178 1/2	71 1/2	80	62 1/2	116	3704
8BH10X72	1152		10	202 1/2				140	4108
8BH12X72	1382		12	226 1/2				164	4849
8BH8X80	1024	80	8	186	71 1/2	88 1/2	70	116	3985
8BH10X80	1280		10	210				140	4415
8BH12X80	1536		12	234				164	5187
9BH8X81	1037	81	8	186 1/2	80	80	62 1/2	124	4152
9BH10X81	1296		10	210 1/2				148	4594
9BH12X81	1555		12	234 1/2				172	5446
9BH8X90	1152	90	8	194	80	88 1/2	70	124	4456
9BH10X90	1440		10	218				148	4925
9BH12X90	1728		12	242				172	5812
9BH8X99	1267	99	8	201 1/2	80	97	77 1/2	124	4838
9BH10X99	1584		10	225 1/2				148	5345
9BH12X99	1901		12	249 1/2				172	6333
10BH8X100	1280	100	8	194	88 1/2	88 1/2	70	124	4754
10BH10X100	1600		10	218				148	5252
10BH12X100	1920		12	242				172	6174
10BH8X110	1408	110	8	201 1/2	88 1/2	97	77 1/2	124	5155
10BH10X110	1760		10	225 1/2				148	5693
10BH12X110	2112		12	249 1/2				172	6719
10BH8X120	1536	120	8	208 1/2	88 1/2	105 1/2	84 1/2	124	5531
10BH10X120	1920		10	232 1/2				148	6098
10BH12X120	2304		12	256 1/2				172	7189
11BH8X121	1549	121	8	201 1/2	97	97	77 1/2	124	5536
11BH10X121	1936		10	225 1/2				148	6116
11BH12X121	2323		12	249 1/2				172	7237
11BH8X132	1690	132	8	208 1/2	97	105 1/2	84 1/2	124	5931
11BH10X132	2112		10	232 1/2				148	6542
11BH12X132	2534		12	256 1/2				172	7730
12BH8X144	1843	144	8	208 1/2	105 1/2	105 1/2	84 1/2	124	6297
12BH10X144	2304		10	232 1/2				148	6939
12BH12X144	2765		12	256 1/2				172	8180
12BH8X156	1997	156	8	216	105 1/2	114	92	124	6837
12BH10X156	2496		10	240				148	7512
12BH12X156	2995		12	264				172	8793
13BH8X169	2163	169	8	216	114	114	92	124	7201
13BH10X169	2704		10	240				148	7909
13BH12X169	3245		12	264				172	9232
13BH8X182	2330	182	8	223 1/2	114	122 1/2	99 1/2	124	7685
13BH10X182	2912		10	247 1/2				148	8438
13BH12X182	3494		12	271 1/2				172	9875

STANDARD FEATURES

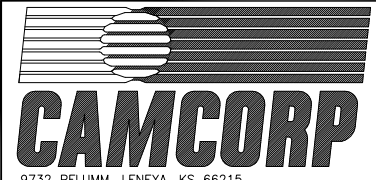
1. ALL WELDED HEAVY-DUTY CONSTRUCTION
2. PRESSURE/VACUUM RATING: +/-20"W.C.
3. STANDARD MATERIALS OF CONSTRUCTION: CARBON STEEL, STAINLESS STEEL, ALUMINUM
4. STANDARD ELECTRICALS: NEMA 4 TIMER AND SOLENOID ENCLOSURES
5. PAINT: STANDARD IS WHITE OR ENVIROGREEN INDUSTRIAL ENAMEL

OPTIONAL FEATURES

1. STRUCTURAL SUPPORTS
2. SERVICE PLATFORMS
3. EXPLOSION VENTING
4. EXPLOSION-PROOF ELECTRICALS
5. HIGHER PRESSURE/VACUUM RATING
6. BIN VENT STYLE
7. WIDE BAG SPACING



BOTTOM REMOVAL BAG DUST COLLECTOR (64 TO 182 BAGS)

REV. 1	10/02/01	CHG'D.	TITLE
			
9732 PFLUMM, LENEXA, KS 66215 PHONE: 913-831-0740 • FAX: 913-831-9271			
TITLE: BOTTOM REMOVAL BAG DUST COLLECTORS MODEL 8BH8X64 TO 13BH12X182 (64 TO 182 BAG)			
DATE:	DRN BY:	DWG. NO.:	P.S.:
8-10-99	DES	CAT-BBA2	36-00
			REV.:
			#1