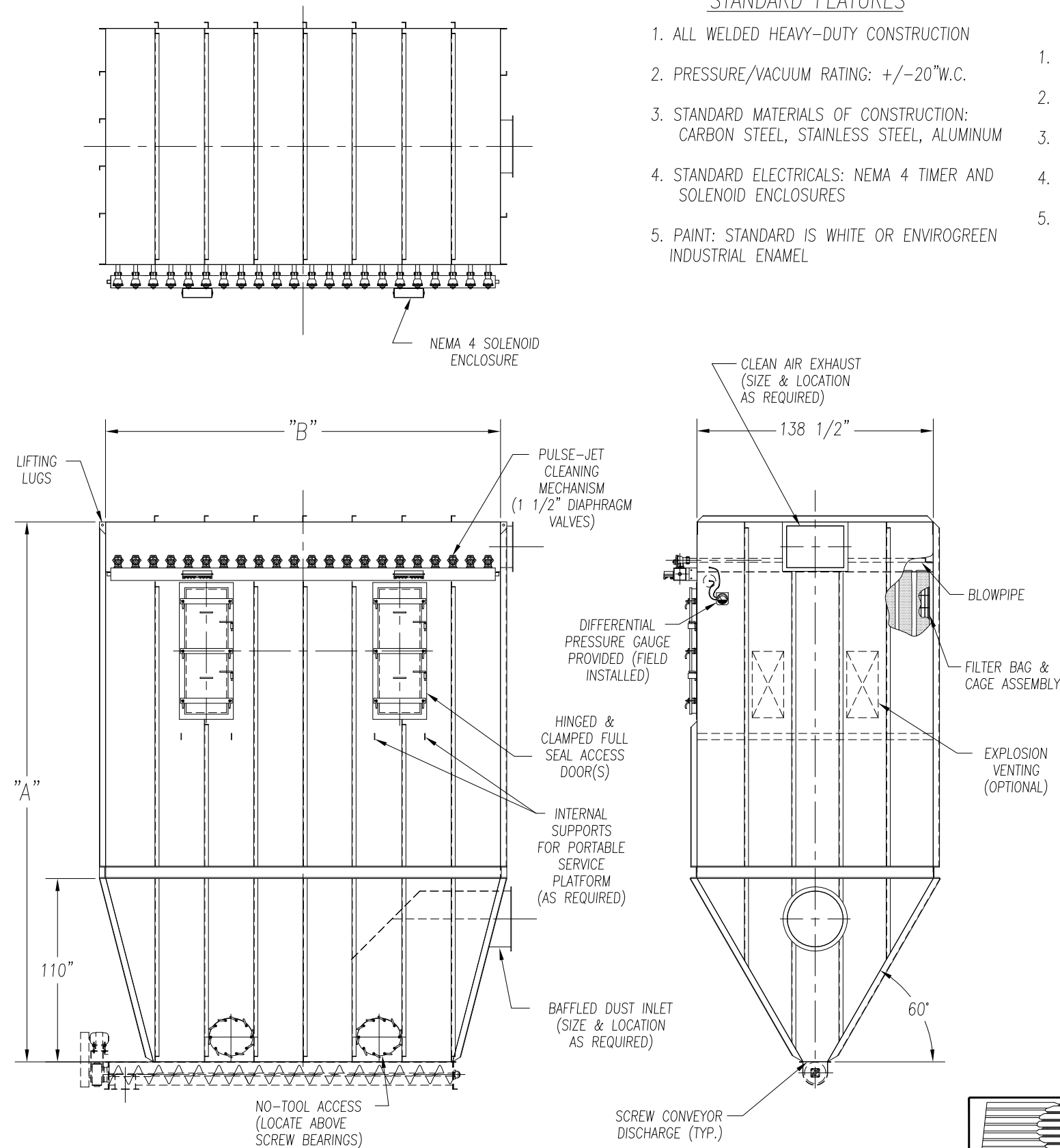


CAMCORP MODELS 47BH8X752 TO 60BH12X960

MODEL NUMBER	FILTER MEDIA (SQ. FT.)	QUAN. OF BAGS	BAG LENGTH (IN FT.)	DIMENSIONS (INCHES)		EST. INSTALLED WT.
				A	B	
47BH8X752	9626	752	8	234	403	25506
47BH10X752	12032		10	258		29492
47BH12X752	14438		12	282		32072
48BH8X768	9830	768	8	234	411 1/2	26058
48BH10X768	12288		10	258		30150
48BH12X768	14746		12	282		32800
49BH8X784	10035	784	8	234	420	26523
49BH10X784	12544		10	258		30671
49BH12X784	15053		12	282		33359
50BH8X800	10240	800	8	234	428 1/2	26988
50BH10X800	12800		10	258		31143
50BH12X800	15360		12	282		33868
51BH8X816	10445	816	8	234	437	27540
51BH10X816	13056		10	258		31851
51BH12X816	15667		12	282		34646
52BH8X832	10650	832	8	234	445 1/2	28005
52BH10X832	13312		10	258		32372
52BH12X832	15974		12	282		35205
53BH8X848	10854	848	8	234	454	28471
53BH10X848	13568		10	258		32893
53BH12X848	16282		12	282		35764
54BH8X864	11059	864	8	234	462 1/2	29022
54BH10X864	13824		10	258		33551
54BH12X864	16589		12	282		36492
55BH8X880	11264	880	8	234	471	29488
55BH10X880	14080		10	258		34073
55BH12X880	16896		12	282		37051
56BH8X896	11469	896	8	234	479 1/2	29953
56BH10X896	14336		10	258		34594
56BH12X896	17203		12	282		37610
57BH8X912	11674	912	8	234	488	30505
57BH10X912	14592		10	258		35252
57BH12X912	17510		12	282		38338
58BH8X928	11878	928	8	234	496 1/2	30970
58BH10X928	14848		10	258		35773
58BH12X928	17818		12	282		38897
59BH8X944	12083	944	8	234	505	31435
59BH10X944	15104		10	258		36295
59BH12X944	18125		12	282		39456
60BH8X960	12288	960	8	234	513 1/2	31987
60BH10X960	15360		10	258		36953
60BH12X960	18432		12	282		40185

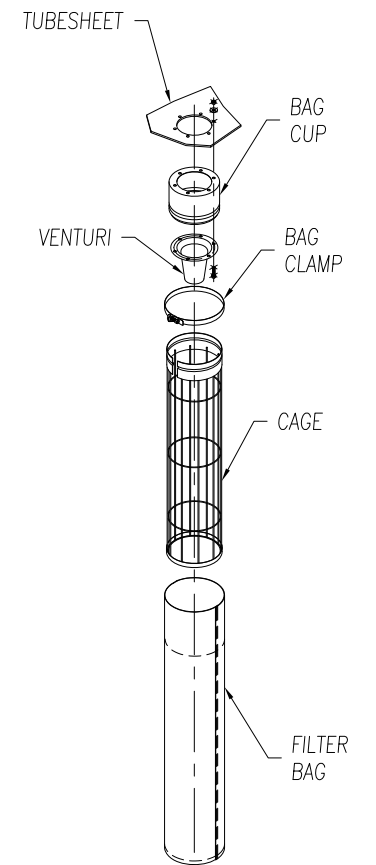


STANDARD FEATURES

1. ALL WELDED HEAVY-DUTY CONSTRUCTION
2. PRESSURE/VACUUM RATING: +/-20"W.C.
3. STANDARD MATERIALS OF CONSTRUCTION: CARBON STEEL, STAINLESS STEEL, ALUMINUM
4. STANDARD ELECTRICALS: NEMA 4 TIMER AND SOLENOID ENCLOSURES
5. PAINT: STANDARD IS WHITE OR ENVIROGREEN INDUSTRIAL ENAMEL

OPTIONAL FEATURES

1. STRUCTURAL SUPPORTS
2. SERVICE PLATFORMS
3. EXPLOSION VENTING
4. EXPLOSION-PROOF ELECTRICALS
5. HIGHER PRESSURE/VACUUM RATING



BOTTOM REMOVAL BAG ASSEMBLY

BOTTOM REMOVAL BAG DUST COLLECTOR (752 TO 960 BAGS)

9732 PFLUMM, LENEXA, KS 66215 PHONE: 913-831-0740 • FAX: 913-831-9271

TITLE: BOTTOM REMOVAL BAG DUST COLLECTORS
MODEL 47BH8X752 TO 60BH12X960 (752 TO 960 BAGS)

DATE: 10/02/01	DRN BY: DOTY	DWG. NO.: CAT-RBOP-3	P.S.: 64-00	REV.:
----------------	--------------	----------------------	-------------	-------