

CAMCORP MODELS 3BH2X9 TO 7BH10X63

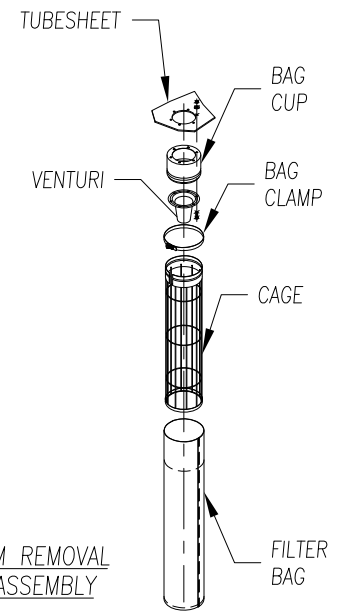
MODEL NUMBER	FILTER MEDIA (SQ. FT.)	QUAN. OF BAGS	BAG LENGTH (IN FT.)	DIMENSIONS (INCHES)					EST. INSTALLED WT.
				A	B	C	D	E	
3BH2X9	29	9	2	62 1/2	29	29	18 1/2	44	440
3BH4X9	58		4	86 1/2				68	566
3BH6X9	86		6	110 1/2				92	692
3BH8X9	115		8	134 1/2				116	817
3BH10X9	144		10	158 1/2				140	943
3BH6X12	115	12	6	118	29	37 1/2	26	92	833
3BH8X12	154		8	142				116	976
3BH10X12	192		10	166				140	1120
3BH6X15	144	15	6	125	29	46	33	92	957
3BH8X15	192		8	149				116	1281
3BH10X15	240		10	173				140	1281
4BH6X16	154	16	6	118	37 1/2	37 1/2	26	92	970
4BH8X16	205		8	142				116	1133
4BH10X16	256		10	166				140	1296
4BH6X20	192	20	6	125	37 1/2	46	33	92	1110
4BH8X20	256		8	149				116	1292
4BH10X20	320		10	173				140	1475
4BH6X24	230	24	6	132 1/2	37 1/2	54 1/2	40 1/2	92	1304
4BH8X24	307		8	156 1/2				116	1516
4BH10X24	384		10	180 1/2				140	1730
5BH6X25	240	25	6	125	46	46	33	92	1259
5BH8X25	320		8	149				116	1461
5BH10X25	400		10	173				140	1667
5BH6X30	288	30	6	132 1/2	46	54 1/2	40 1/2	92	1470
5BH8X30	384		8	156 1/2				116	1705
5BH10X30	480		10	180 1/2				140	1941
5BH6X35	336	35	6	140	46	63	48	92	1665
5BH8X35	448		8	164				116	1921
5BH10X35	560		10	188				140	2178
6BH6X36	346	36	6	132 1/2	54 1/2	54 1/2	40 1/2	92	1695
6BH8X36	461		8	156 1/2				116	1963
6BH10X36	576		10	180 1/2				140	2232
6BH8X42	538	42	8	164	54 1/2	63	48	116	2199
6BH10X42	672		10	188				140	2491
6BH8X48	614	48	8	171	54 1/2	71 1/2	55	116	2407
6BH10X48	768		10	195				140	2722
7BH8X49	627	49	8	164	63	63	48	116	2407
7BH10X49	784		10	188				140	2724
7BH8X56	717	56	8	171	63	71 1/2	55	116	2632
7BH10X56	896		10	195				140	2973
7BH8X63	806	63	8	178 1/2	63	80	62 1/2	116	3392
7BH10X63	1008		10	202 1/2				140	3768

STANDARD FEATURES

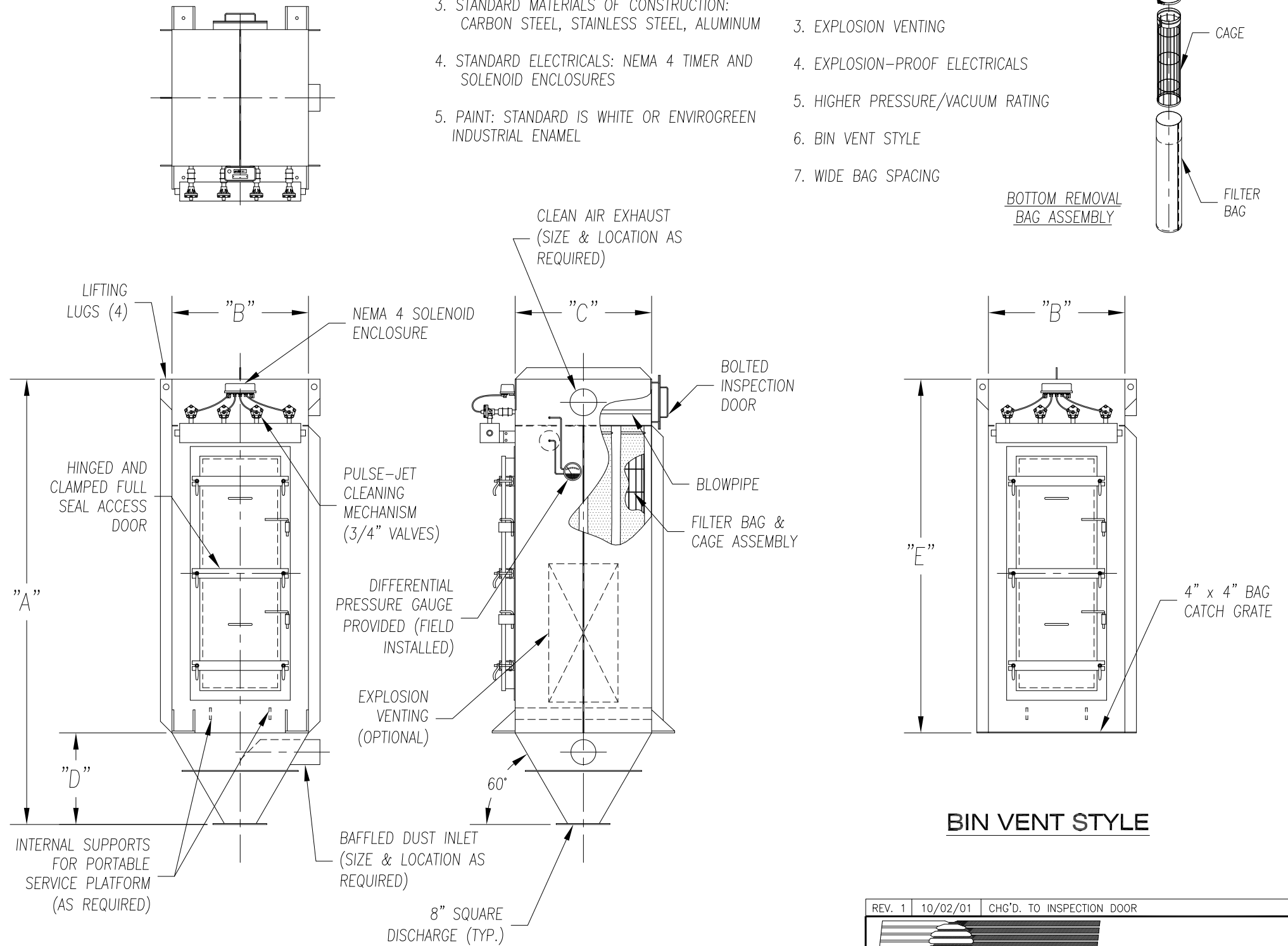
1. ALL WELDED HEAVY-DUTY CONSTRUCTION
2. PRESSURE/VACUUM RATING: +/-20"W.C.
3. STANDARD MATERIALS OF CONSTRUCTION: CARBON STEEL, STAINLESS STEEL, ALUMINUM
4. STANDARD ELECTRICALS: NEMA 4 TIMER AND SOLENOID ENCLOSURES
5. PAINT: STANDARD IS WHITE OR ENVIROGREEN INDUSTRIAL ENAMEL

OPTIONAL FEATURES

1. STRUCTURAL SUPPORTS
2. SERVICE PLATFORMS
3. EXPLOSION VENTING
4. EXPLOSION-PROOF ELECTRICALS
5. HIGHER PRESSURE/VACUUM RATING
6. BIN VENT STYLE
7. WIDE BAG SPACING

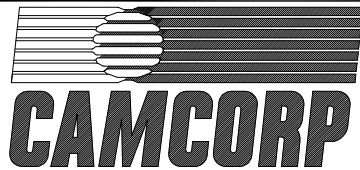


BOTTOM REMOVAL BAG ASSEMBLY



BIN VENT STYLE

BOTTOM REMOVAL BAG DUST COLLECTOR (9 TO 63 BAGS)

REV. 1	10/02/01	CHG'D. TO INSPECTION DOOR
 CAMCORP <small>9732 PFLUMM, LENEXA, KS 66215</small>		
<small>PHONE: 913-831-0740 FAX: 913-831-9271</small>		
TITLE: BOTTOM REMOVAL BAG DUST COLLECTORS MODEL 3BH2X9 TO 7BH10X63 (9 TO 63 BAGS)		
DATE: 4/8/98	DRN BY: DES	DWG. NO.: CAT-BBA1
P.S.: 16-00	REV.: #1	