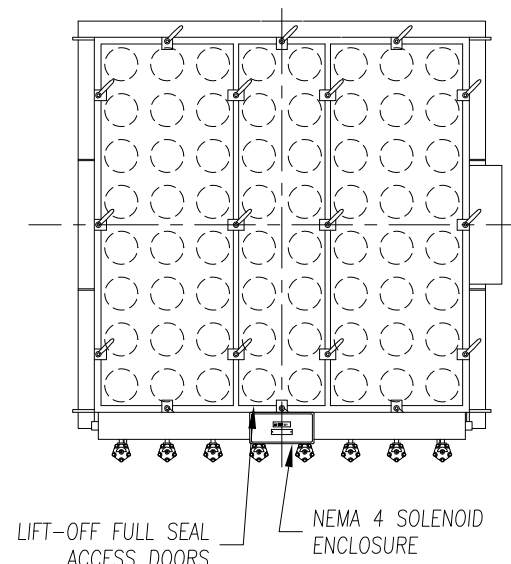


CAMCORP MODELS 8TR8X64 TO 16TR12X256									
MODEL NUMBER	FILTER MEDIA (SQ. FT.)	QUAN. OF BAGS	BAG LENGTH (IN FT.)	DIMENSIONS (INCHES)					EST. INSTALLED WT.
				A	B	C	D	E	
8TR8X64	819	64	8	165	71 1/2	71 1/2	55	110	2777
8TR10X64	1024		10	189				134	3144
8TR12X64	1229		12	213				158	3741
8TR8X72	922	72	8	172 1/2	71 1/2	80	62 1/2	110	3626
8TR10X72	1152		10	196 1/2				134	4030
8TR12X72	1382		12	220 1/2				158	4763
8TR8X80	1024	80	8	180	71 1/2	88 1/2	70	110	3898
8TR10X80	1280		10	204				134	4328
8TR12X80	1536		12	228				158	5092
9TR8X81	1037	81	8	182 1/2	80	80	62 1/2	120	4110
9TR10X81	1296		10	206 1/2				144	4552
9TR12X81	1555		12	230 1/2				168	5015
9TR8X90	1152	90	8	190	80	88 1/2	70	120	4405
9TR10X90	1440		10	214				144	4875
9TR12X90	1728		12	238				168	5754
9TR8X99	1267	99	8	197 1/2	80	97	77 1/2	120	4777
9TR10X99	1584		10	221 1/2				144	5284
9TR12X99	1901		12	245 1/2				168	6264
10TR8X100	1280	100	8	190	88 1/2	88 1/2	70	120	4702
10TR10X100	1600		10	214				144	5200
10TR12X100	1920		12	238				168	6115
10TR8X110	1408	110	8	197 1/2	88 1/2	97	77 1/2	120	5091
10TR10X110	1760		10	221 1/2				144	5630
10TR12X110	2112		12	245 1/2				168	6648
10TR8X120	1536	120	8	204 1/2	88 1/2	105 1/2	84 1/2	120	5459
10TR10X120	1920		10	228 1/2				144	6026
10TR12X120	2304		12	252 1/2				168	7109
11TR8X121	1549	121	8	197 1/2	97	97	77 1/2	120	5469
11TR10X121	1936		10	221 1/2				144	6049
11TR12X121	2323		12	245 1/2				168	7161
11TR8X132	1690	132	8	204 1/2	97	105 1/2	84 1/2	120	5854
11TR10X132	2112		10	228 1/2				144	6465
11TR12X132	2534		12	252 1/2				168	7644
12TR8X144	1843	144	8	204 1/2	105 1/2	105 1/2	84 1/2	120	6215
12TR10X144	2304		10	228 1/2				144	6858
12TR12X144	2765		12	252 1/2				168	8090
12TR8X156	1997	156	8	212	105 1/2	114	92	120	6794
12TR10X156	2496		10	236				144	7469
12TR12X156	2995		12	260				168	8741
13TR8X169	2163	169	8	212	114	114	92	120	7158
13TR10X169	2704		10	236				144	7867
13TR12X169	3245		12	260				68	9181
13TR8X182	2330	182	8	219 1/2	114	122 1/2	99 1/2	120	7629
13TR10X182	2912		10	243 1/2				144	8382
13TR12X182	3494		12	267 1/2				168	9810

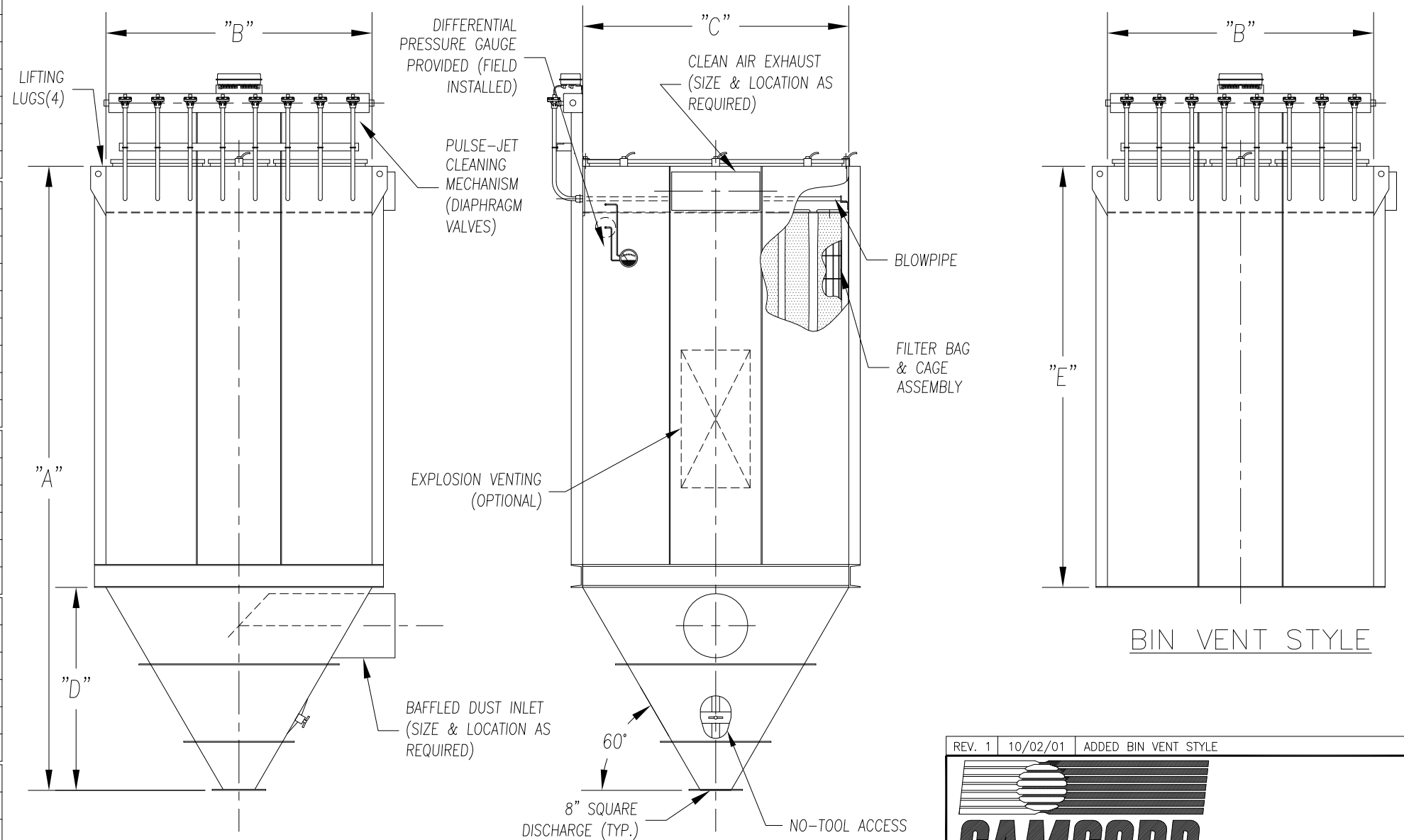
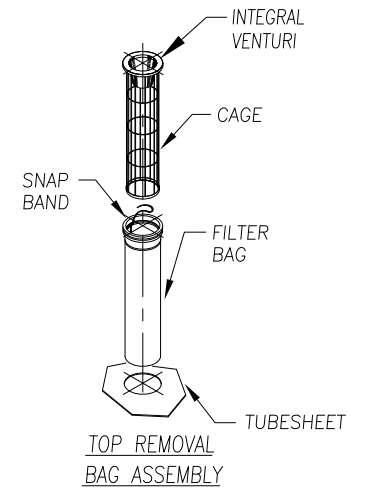


**STANDARD FEATURES**

1. ALL WELDED HEAVY-DUTY CONSTRUCTION
2. PRESSURE/VACUUM RATING: +/-20"W.C.
3. STANDARD MATERIALS OF CONSTRUCTION: CARBON STEEL, STAINLESS STEEL, ALUMINUM
4. STANDARD ELECTRICALS: NEMA 4 TIMER AND SOLENOID ENCLOSURES
5. PAINT IS STANDARD WHITE OR ENVIROGREEN INDUSTRIAL ENAMEL.

**OPTIONAL FEATURES**

1. STRUCTURAL SUPPORTS
2. SERVICE PLATFORMS
3. EXPLOSION VENTING
4. EXPLOSION-PROOF ELECTRICALS
5. HIGHER PRESSURE/VACUUM RATING
6. BIN VENT STYLE
7. WIDE BAG SPACING
8. WALK-IN CLEAN AIR PLENUM



TOP REMOVAL BAG DUST COLLECTOR ( 64 TO 182 BAGS )

REV. 1	10/02/01	ADDED BIN VENT STYLE
9732 PFLUMM, LENEXA, KS 66215      PHONE: 913-831-0740 • FAX: 913-831-9271		
<b>TITLE:</b> TOP REMOVAL BAG DUST COLLECTOR MODELS 8TR8X64 TO 13TR12X182 ( 64 TO 182 BAGS )		
DATE:	DRN BY:	DWG. NO.:
8-10-99	DES	CAT-TBA2
P.S.:	REV.:	
36-00	#1	