

CAMCORP MODELS 8BH8X64 TO 16BH12X256

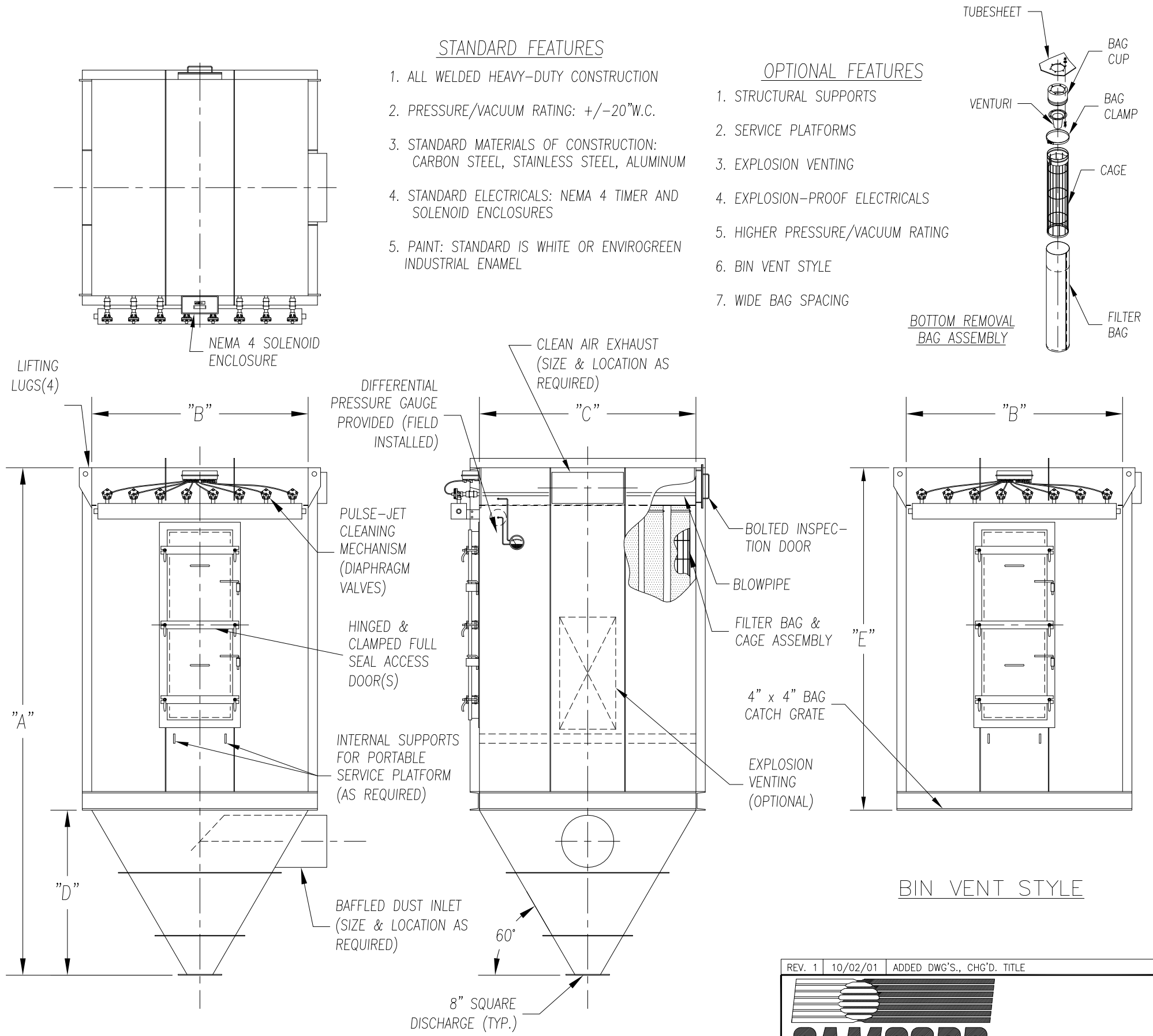
MODEL NUMBER	FILTER MEDIA (SQ. FT.)	QUAN. OF BAGS	BAG LENGTH (IN FT.)	DIMENSIONS (INCHES)					EST. INSTALLED WT.
				A	B	C	D	E	
14BH8X196	2509	196	8	223 1/2	122 1/2	122 1/2	99 1/2	124	8134
14BH10X196	3136		10	247 1/2				148	8933
14BH12X196	3763		12	271 1/2				172	10473
14BH8X210	2688	210	8	231	122 1/2	131	107	124	8622
14BH10X210	3360		10	255				148	9457
14BH12X210	4032		12	279				172	11078
15BH8X225	2880	225	8	231	131	131	107	124	9061
15BH10X225	3600		10	255				148	9932
15BH12X225	4320		12	279				172	11615
15BH8X240	3072	240	8	238	131	139 1/2	114	124	9508
15BH10X240	3840		10	262				148	10416
15BH12X240	4608		12	286				172	12146
16BH8X256	3277	256	8	238	139 1/2	139 1/2	114	124	9936
16BH10X256	4096		10	262				148	10883
16BH12X256	4916		12	286				172	12661

STANDARD FEATURES

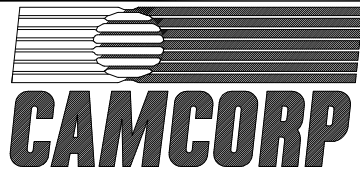
1. ALL WELDED HEAVY-DUTY CONSTRUCTION
2. PRESSURE/VACUUM RATING: +/-20"W.C.
3. STANDARD MATERIALS OF CONSTRUCTION: CARBON STEEL, STAINLESS STEEL, ALUMINUM
4. STANDARD ELECTRICALS: NEMA 4 TIMER AND SOLENOID ENCLOSURES
5. PAINT: STANDARD IS WHITE OR ENVIROGREEN INDUSTRIAL ENAMEL

OPTIONAL FEATURES

1. STRUCTURAL SUPPORTS
2. SERVICE PLATFORMS
3. EXPLOSION VENTING
4. EXPLOSION-PROOF ELECTRICALS
5. HIGHER PRESSURE/VACUUM RATING
6. BIN VENT STYLE
7. WIDE BAG SPACING



BOTTOM REMOVAL BAG DUST COLLECTOR (196 TO 256 BAGS)

REV. 1	10/02/01	ADDED DWG'S., CHG'D. TITLE
 CAMCORP <small>9732 PFLUMM, LENEXA, KS 66215</small>		
<small>PHONE: 913-831-0740 • FAX: 913-831-9271</small>		
TITLE: BOTTOM REMOVAL BAG DUST COLLECTORS MODEL 8BH8X196 TO 16BH12X256 (196 TO 256 BAG)		
DATE: 8-10-99	DRN BY: DES	DWG. NO.: CAT-BBA2-2
P.S.: 36-00	REV.: #1	