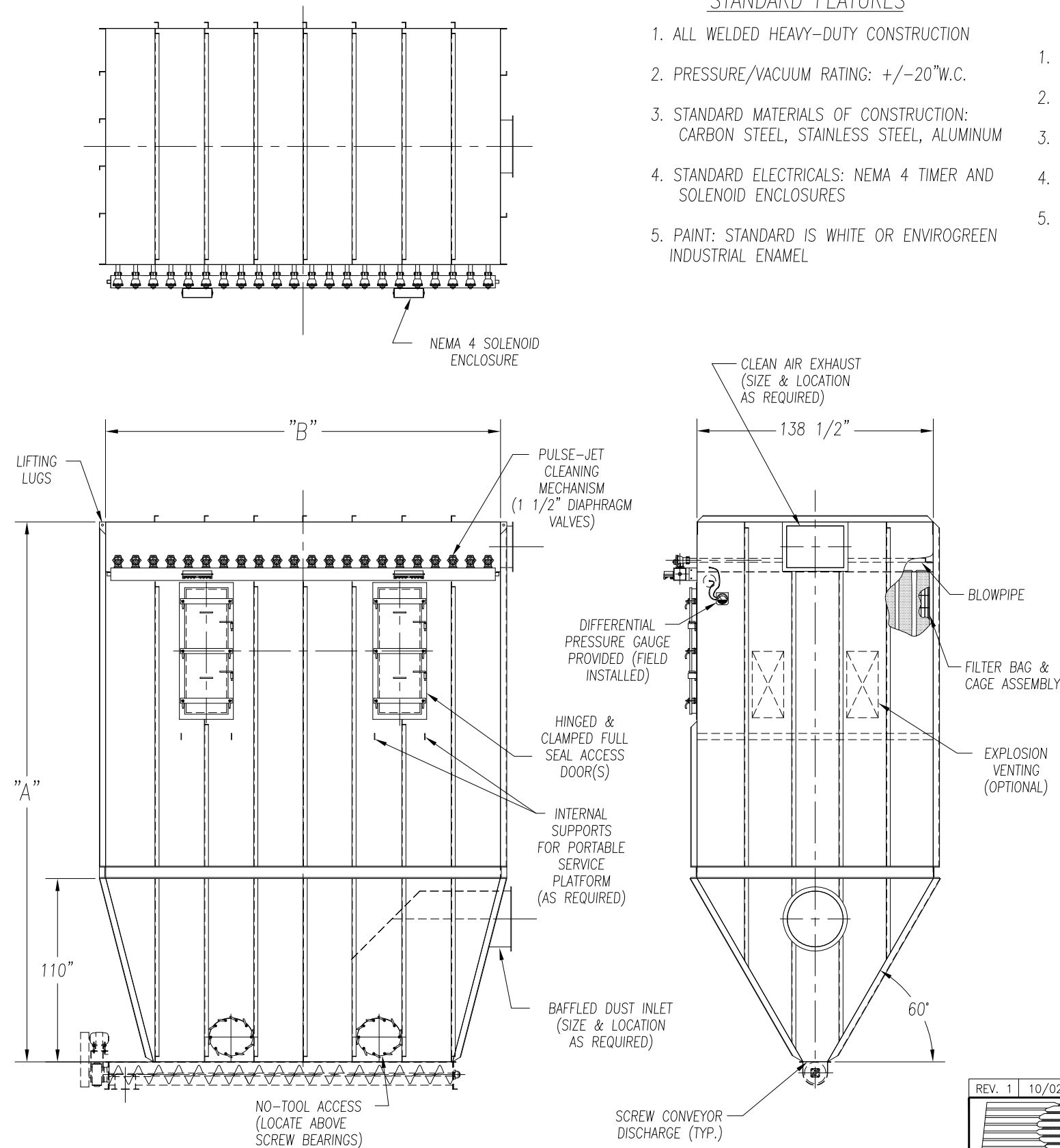


CAMCORP MODELS 32BH8X512 TO 46BH12X736

MODEL NUMBER	FILTER MEDIA (SQ. FT.)	QUAN. OF BAGS	BAG LENGTH (IN FT.)	DIMENSIONS (INCHES)		EST. INSTALLED WT.
				A	B	
32BH8X512	6554	512	8	234	275 1/2	18094
32BH10X512	8192		10	258		20988
32BH12X512	9830		12	282		22841
33BH8X528	6758	528	8	234	284	18591
33BH10X528	8448		10	258		21540
33BH12X528	10138		12	282		23446
34BH8X544	6963	544	8	234	292 1/2	19111
34BH10X544	8704		10	258		22168
34BH12X544	10445		12	282		24128
35BH8X560	7168	560	8	234	301	19577
35BH10X560	8960		10	258		22689
35BH12X560	10752		12	282		24687
36BH8X576	7373	576	8	234	309 1/2	20073
36BH10X576	9216		10	258		23241
36BH12X576	11059		12	282		25292
37BH8X592	7578	592	8	234	318	20594
37BH10X592	9472		10	258		23868
37BH12X592	11366		12	282		25974
38BH8X608	7782	608	8	234	326 1/2	21059
38BH10X608	9728		10	258		24390
38BH12X608	11674		12	282		26533
39BH8X624	7987	624	8	234	335	21555
39BH10X624	9984		10	258		24942
39BH12X624	11981		12	282		27138
40BH8X640	8192	640	8	234	343 1/2	22076
40BH10X640	10240		10	258		25569
40BH12X640	12288		12	282		27821
41BH8X656	8397	656	8	234	351	22541
41BH10X656	10496		10	258		26090
41BH12X656	12595		12	282		28379
42BH8X672	8602	672	8	234	360 1/2	23038
42BH10X672	10752		10	258		26642
42BH12X672	12902		12	282		28985
43BH8X688	8806	688	8	234	369	23558
43BH10X688	11008		10	258		27270
43BH12X688	13210		12	282		29667
44BH8X704	9011	704	8	234	377 1/2	24024
44BH10X704	11264		10	258		27791
44BH12X704	13517		12	282		30225
45BH8X720	9216	720	8	234	386	24575
45BH10X720	11520		10	258		28449
45BH12X720	13824		12	282		30954
46BH8X736	9421	736	8	234	394 1/2	25041
46BH10X736	11776		10	258		28971
46BH12X736	14131		12	282		31513

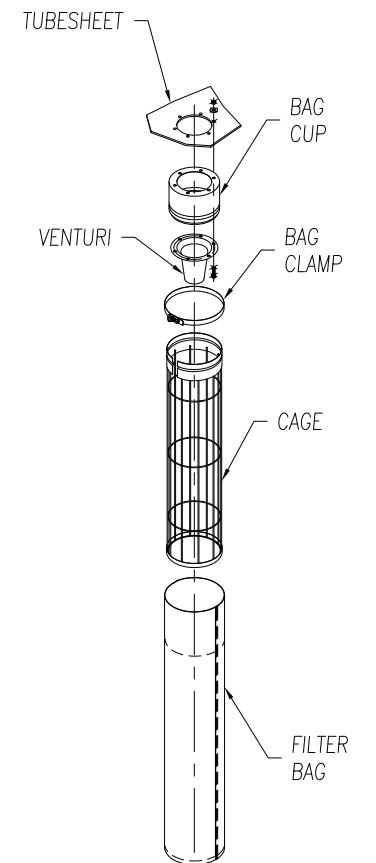


STANDARD FEATURES

1. ALL WELDED HEAVY-DUTY CONSTRUCTION
2. PRESSURE/VACUUM RATING: +/-20"W.C.
3. STANDARD MATERIALS OF CONSTRUCTION: CARBON STEEL, STAINLESS STEEL, ALUMINUM
4. STANDARD ELECTRICALS: NEMA 4 TIMER AND SOLENOID ENCLOSURES
5. PAINT: STANDARD IS WHITE OR ENVIROGREEN INDUSTRIAL ENAMEL

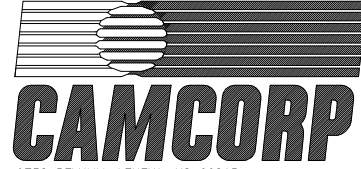
OPTIONAL FEATURES

1. STRUCTURAL SUPPORTS
2. SERVICE PLATFORMS
3. EXPLOSION VENTING
4. EXPLOSION-PROOF ELECTRICALS
5. HIGHER PRESSURE/VACUUM RATING



BOTTOM REMOVAL BAG ASSEMBLY

BOTTOM REMOVAL BAG DUST COLLECTOR (512 TO 736 BAGS)

REV. 1	10/02/01	ADDED DWG'S., CHG'D. TITLE
		
9732 PFLUMM, LENEXA, KS 66215 PHONE: 913-831-0740 • FAX: 913-831-9271		
TITLE: BOTTOM REMOVAL BAG DUST COLLECTORS MODEL 32BH8X512 TO 46BH12X736 (512 TO 736 BAGS)		
DATE: 08/17/99	DRN BY: DES	DWG. NO.: CAT-BBA3-2
P.S.: 64-00	REV. #: #1	