

CAMCORP MODELS 3BH2X9 TO 7BH10X63

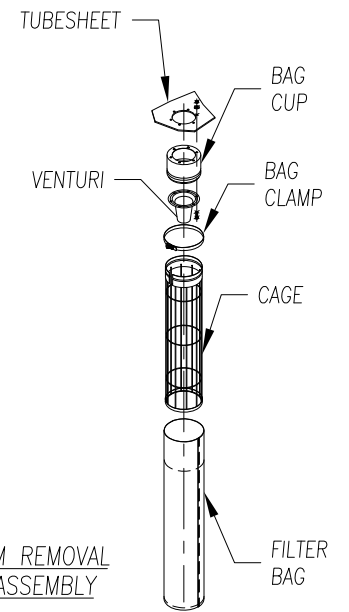
| MODEL NUMBER | FILTER MEDIA (SQ. FT.) | QUAN. OF BAGS | BAG LENGTH (IN FT.) | DIMENSIONS (INCHES) | | | | | EST. INSTALLED WT. |
|--------------|------------------------|---------------|---------------------|---------------------|--------|--------|--------|-----|--------------------|
| | | | | A | B | C | D | E | |
| 3BH2X9 | 29 | 9 | 2 | 62 1/2 | 29 | 29 | 18 1/2 | 44 | 440 |
| 3BH4X9 | 58 | | 4 | 86 1/2 | | | | 68 | 566 |
| 3BH6X9 | 86 | | 6 | 110 1/2 | | | | 92 | 692 |
| 3BH8X9 | 115 | | 8 | 134 1/2 | | | | 116 | 817 |
| 3BH10X9 | 144 | | 10 | 158 1/2 | | | | 140 | 943 |
| 3BH6X12 | 115 | 12 | 6 | 118 | 29 | 37 1/2 | 26 | 92 | 833 |
| 3BH8X12 | 154 | | 8 | 142 | | | | 116 | 976 |
| 3BH10X12 | 192 | | 10 | 166 | | | | 140 | 1120 |
| 3BH6X15 | 144 | 15 | 6 | 125 | 29 | 46 | 33 | 92 | 957 |
| 3BH8X15 | 192 | | 8 | 149 | | | | 116 | 1281 |
| 3BH10X15 | 240 | | 10 | 173 | | | | 140 | 1281 |
| 4BH6X16 | 154 | 16 | 6 | 118 | 37 1/2 | 37 1/2 | 26 | 92 | 970 |
| 4BH8X16 | 205 | | 8 | 142 | | | | 116 | 1133 |
| 4BH10X16 | 256 | | 10 | 166 | | | | 140 | 1296 |
| 4BH6X20 | 192 | 20 | 6 | 125 | 37 1/2 | 46 | 33 | 92 | 1110 |
| 4BH8X20 | 256 | | 8 | 149 | | | | 116 | 1292 |
| 4BH10X20 | 320 | | 10 | 173 | | | | 140 | 1475 |
| 4BH6X24 | 230 | 24 | 6 | 132 1/2 | 37 1/2 | 54 1/2 | 40 1/2 | 92 | 1304 |
| 4BH8X24 | 307 | | 8 | 156 1/2 | | | | 116 | 1516 |
| 4BH10X24 | 384 | | 10 | 180 1/2 | | | | 140 | 1730 |
| 5BH6X25 | 240 | 25 | 6 | 125 | 46 | 46 | 33 | 92 | 1259 |
| 5BH8X25 | 320 | | 8 | 149 | | | | 116 | 1461 |
| 5BH10X25 | 400 | | 10 | 173 | | | | 140 | 1667 |
| 5BH6X30 | 288 | 30 | 6 | 132 1/2 | 46 | 54 1/2 | 40 1/2 | 92 | 1470 |
| 5BH8X30 | 384 | | 8 | 156 1/2 | | | | 116 | 1705 |
| 5BH10X30 | 480 | | 10 | 180 1/2 | | | | 140 | 1941 |
| 5BH6X35 | 336 | 35 | 6 | 140 | 46 | 63 | 48 | 92 | 1665 |
| 5BH8X35 | 448 | | 8 | 164 | | | | 116 | 1921 |
| 5BH10X35 | 560 | | 10 | 188 | | | | 140 | 2178 |
| 6BH6X36 | 346 | 36 | 6 | 132 1/2 | 54 1/2 | 54 1/2 | 40 1/2 | 92 | 1695 |
| 6BH8X36 | 461 | | 8 | 156 1/2 | | | | 116 | 1963 |
| 6BH10X36 | 576 | | 10 | 180 1/2 | | | | 140 | 2232 |
| 6BH8X42 | 538 | 42 | 8 | 164 | 54 1/2 | 63 | 48 | 116 | 2199 |
| 6BH10X42 | 672 | | 10 | 188 | | | | 140 | 2491 |
| 6BH8X48 | 614 | 48 | 8 | 171 | 54 1/2 | 71 1/2 | 55 | 116 | 2407 |
| 6BH10X48 | 768 | | 10 | 195 | | | | 140 | 2722 |
| 7BH8X49 | 627 | 49 | 8 | 164 | 63 | 63 | 48 | 116 | 2407 |
| 7BH10X49 | 784 | | 10 | 188 | | | | 140 | 2724 |
| 7BH8X56 | 717 | 56 | 8 | 171 | 63 | 71 1/2 | 55 | 116 | 2632 |
| 7BH10X56 | 896 | | 10 | 195 | | | | 140 | 2973 |
| 7BH8X63 | 806 | 63 | 8 | 178 1/2 | 63 | 80 | 62 1/2 | 116 | 3392 |
| 7BH10X63 | 1008 | | 10 | 202 1/2 | | | | 140 | 3768 |

STANDARD FEATURES

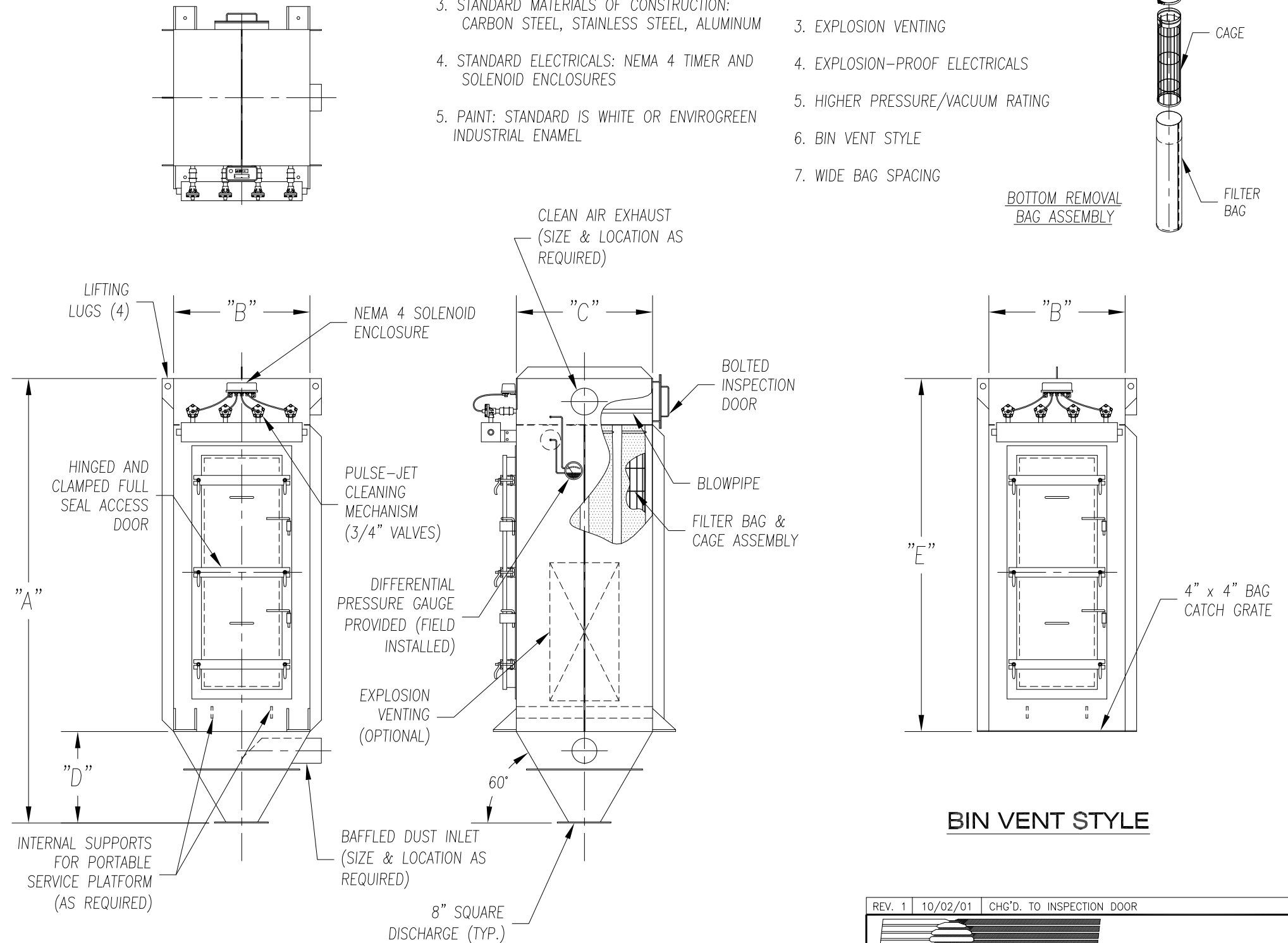
1. ALL WELDED HEAVY-DUTY CONSTRUCTION
2. PRESSURE/VACUUM RATING: +/-20"W.C.
3. STANDARD MATERIALS OF CONSTRUCTION: CARBON STEEL, STAINLESS STEEL, ALUMINUM
4. STANDARD ELECTRICALS: NEMA 4 TIMER AND SOLENOID ENCLOSURES
5. PAINT: STANDARD IS WHITE OR ENVIROGREEN INDUSTRIAL ENAMEL

OPTIONAL FEATURES

1. STRUCTURAL SUPPORTS
2. SERVICE PLATFORMS
3. EXPLOSION VENTING
4. EXPLOSION-PROOF ELECTRICALS
5. HIGHER PRESSURE/VACUUM RATING
6. BIN VENT STYLE
7. WIDE BAG SPACING

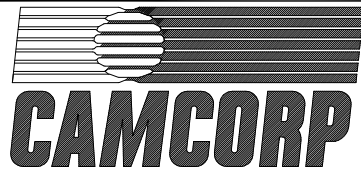


BOTTOM REMOVAL BAG ASSEMBLY



BIN VENT STYLE

BOTTOM REMOVAL BAG DUST COLLECTOR (9 TO 63 BAGS)

| | | |
|---|----------------|---------------------------|
| REV. 1 | 10/02/01 | CHG'D. TO INSPECTION DOOR |
|  | | |
| 9732 PFLUMM, LENEXA, KS 66215 PHONE: 913-831-0740 FAX: 913-831-9271 | | |
| TITLE: BOTTOM REMOVAL BAG DUST COLLECTORS MODEL 3BH2X9 TO 7BH10X63 (9 TO 63 BAGS) | | |
| DATE: 4/8/98 | DRN BY: DES | DWG. NO.: CAT-BBA1 |
| P.S.: 16-00 | REV.: #1 | |