

CAMCORP MODELS 8SFBH45X64-35P TO 16SFBH84X256-45P

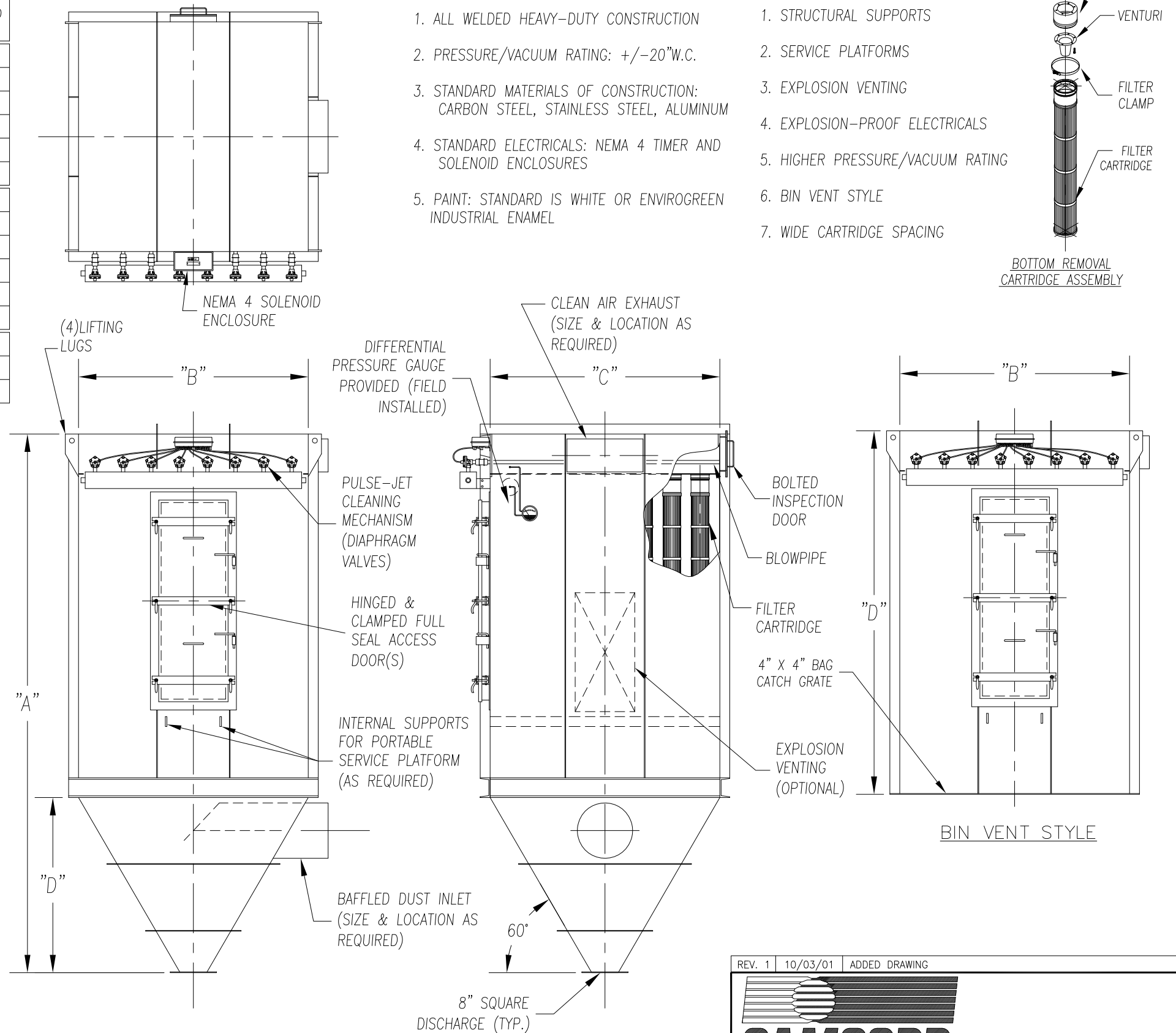
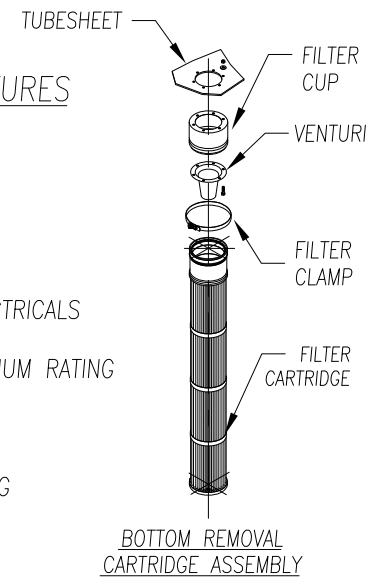
MODEL NUMBER	FILTER AREA (SQ. FT.)			QUAN. OF CARTS	CARTRIDGE LENGTH (INCHES)	DIMENSIONS (INCHES)					EST. INSTALLED WT.
	35 PLEATS	45 PLEATS	60 PLEATS			A	B	C	D	E	
14SFBH45X196	4331	5566	7526	196	45	172 1/2	122 1/2	122 1/2	99 1/2	73	6673
14SFBH60X196	6076	7820	10407		60	187 1/2				88	7175
14SFBH84X196	8780	11152	N/A		80	211 1/2				112	7860
14SFBH45X210	4641	5964	8064	210	45	180	122 1/2	131	107	73	7103
14SFBH60X210	6510	8379	11151		60	195				88	7627
14SFBH84X210	9408	11949	N/A		80	219				112	8339
15SFBH45X225	4972	6390	8640	225	45	180	131	131	107	73	7481
15SFBH60X225	6975	8977	11947		60	195				88	8028
15SFBH84X225	10080	12802	N/A		80	219				112	8769
15SFBH45X240	5304	6816	9216	240	45	187	131	139 1/2	114	73	7867
15SFBH60X240	7440	9576	12744		60	202				88	8438
15SFBH84X240	10752	13656	N/A		80	226				112	9207
16SFBH45X256	5657	7270	9830	256	45	187	139 1/2	139 1/2	114	73	8233
16SFBH60X256	7936	10214	13593		60	202				88	8828
16SFBH84X256	11468	14566	N/A		80	226				112	9626

STANDARD FEATURES

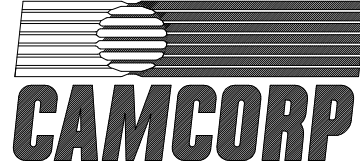
1. ALL WELDED HEAVY-DUTY CONSTRUCTION
2. PRESSURE/VACUUM RATING: +/-20"W.C.
3. STANDARD MATERIALS OF CONSTRUCTION: CARBON STEEL, STAINLESS STEEL, ALUMINUM
4. STANDARD ELECTRICALS: NEMA 4 TIMER AND SOLENOID ENCLOSURES
5. PAINT: STANDARD IS WHITE OR ENVIROGREEN INDUSTRIAL ENAMEL

OPTIONAL FEATURES

1. STRUCTURAL SUPPORTS
2. SERVICE PLATFORMS
3. EXPLOSION VENTING
4. EXPLOSION-PROOF ELECTRICALS
5. HIGHER PRESSURE/VACUUM RATING
6. BIN VENT STYLE
7. WIDE CARTRIDGE SPACING



BOTTOM REMOVAL CARTRIDGE DUST COLLECTOR (196 TO 256 CARTRIDGES)

REV. 1	10/03/01	ADDED DRAWING
 9732 PFLUMM, LENEXA, KS 6621 PHONE: 913-831-0740 • FAX: 913-831-9271		
TITLE: BOTTOM REMOVAL CARTRIDGE DUST COLLECTORS MODEL 14SFBH45X196-35P TO 16SFBH84X256-45P (196 TO 256 CARTRIDGE)		
DATE: 08/10/99	DRN BY: DES	DWG. NO.: CAT-BCA2-2
P.S.: 36-00	REV.: #2	