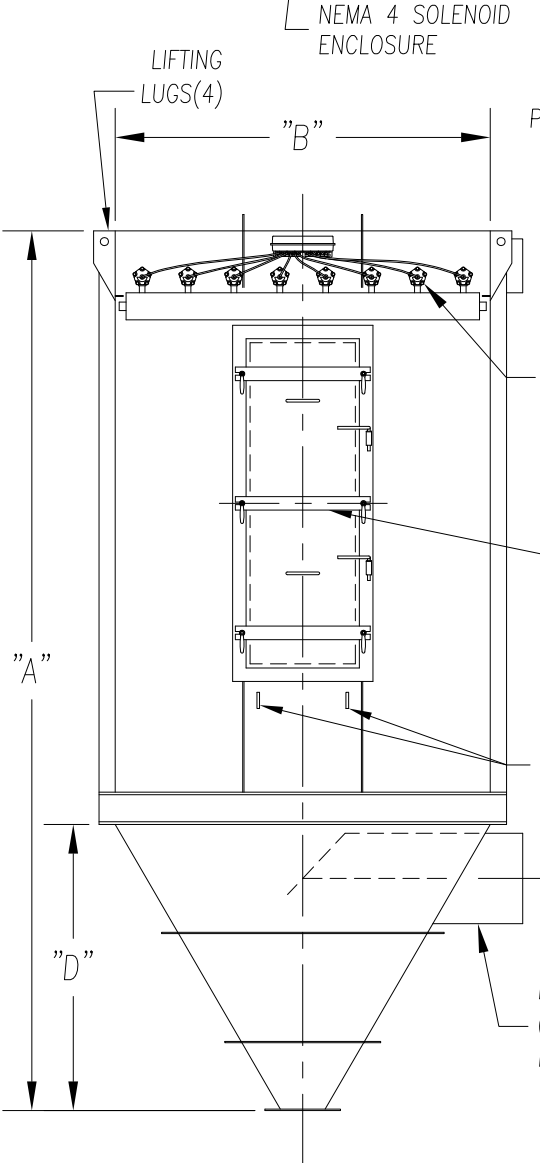
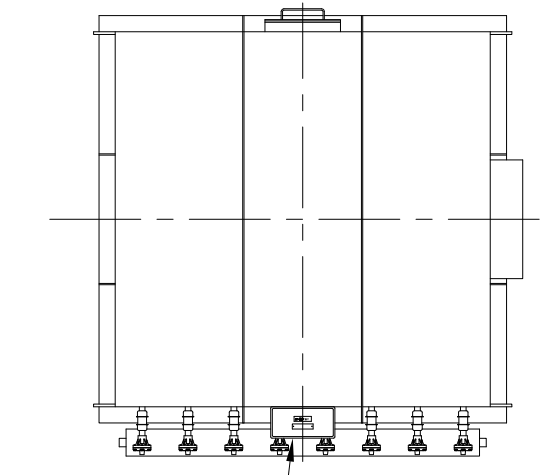
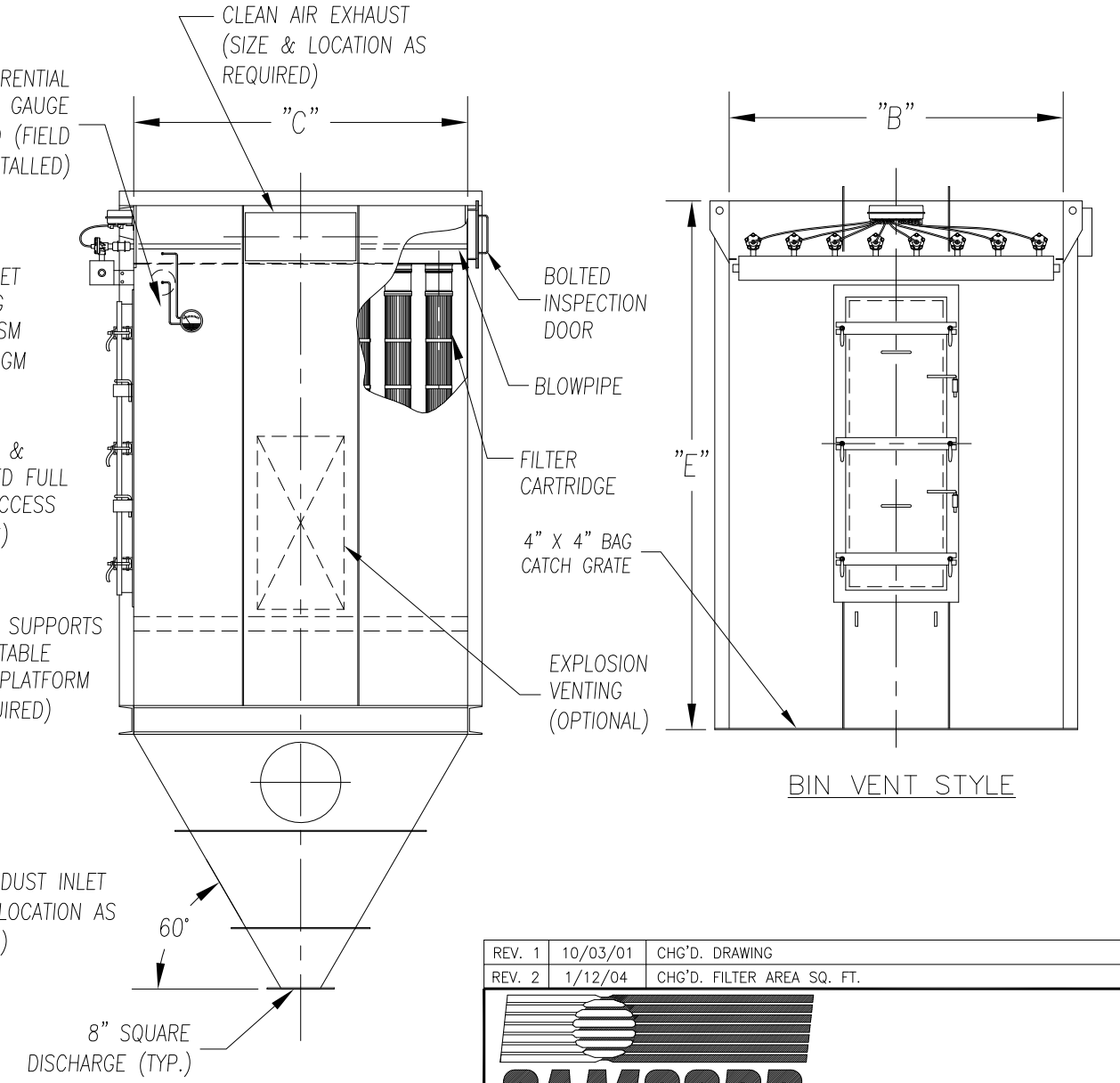
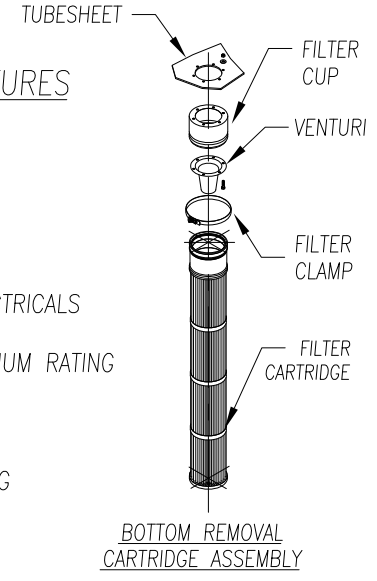


CAMCORP MODELS 8SFBH45X64-35P TO 16SFBH84X256-45P											
MODEL NUMBER	FILTER AREA (SQ. FT.)			QUAN. OF CARTS	CARTRIDGE LENGTH (INCHES)	DIMENSIONS (INCHES)					EST. INSTALLED WT.
	35 PLEATS	45 PLEATS	60 PLEATS			A	B	C	D	E	
8SFBH45X64	1414	1817	2457	64	45	120	71 1/2	71 1/2	55	65	2154
8SFBH60X64	1984	2553	3398		60	135				80	2385
8SFBH84X64	2867	3641	N/A		80	159				104	2715
8SFBH45X72	1591	2044	2764	72	45	127 1/2	71 1/2	80	62 1/2	65	2933
8SFBH60X72	2232	2872	3823		60	142 1/2				80	3186
8SFBH84X72	3225	4096	N/A		80	166 1/2				104	3548
8SFBH45X80	1768	2272	3078	80	45	135	71 1/2	88 1/2	70	65	3169
8SFBH60X80	2480	3192	4248		60	150				80	3438
8SFBH84X80	3584	4552	N/A		80	174				104	3821
9SFBH45X81	1790	2300	3110	81	45	135 1/2	80	80	62 1/2	73	3310
9SFBH60X81	2511	3232	4301		60	150 1/2				88	3588
9SFBH84X81	3628	4609	N/A		80	174 1/2				112	3983
9SFBH45X90	1989	2556	3456	90	45	143	80	88 1/2	70	73	3567
9SFBH60X90	2790	3591	4779		60	158				88	3862
9SFBH84X90	4032	5121	N/A		80	182				112	4279
9SFBH45X99	2188	2811	3801	99	45	150 1/2	80	97	77 1/2	73	3879
9SFBH60X99	3069	3950	5257		60	165 1/2				88	4197
9SFBH84X99	4435	5633	N/A		80	189 1/2				112	4647
10SFBH45X100	2210	2840	3840	100	45	143	88 1/2	88 1/2	70	73	3816
10SFBH60X100	3100	3990	5310		60	158				88	4128
10SFBH84X100	4480	5690	N/A		80	182				112	4569
10SFBH45X110	2431	3124	4224	110	45	150 1/2	88 1/2	97	77 1/2	73	4144
10SFBH60X110	3410	4389	5841		60	165 1/2				88	4482
10SFBH84X110	4928	6259	N/A		80	189 1/2				112	4956
10SFBH45X120	2652	3408	4608	120	45	157 1/2	88 1/2	105 1/2	84 1/2	73	4470
10SFBH60X120	3720	4788	6372		60	172 1/2				88	4826
10SFBH84X120	5376	6828	N/A		80	196 1/2				112	5324
11SFBH45X121	2678	3436	4646	121	45	150 1/2	97	97	77 1/2	73	4451
11SFBH60X121	3751	4878	6425		60	165 1/2				88	4814
11SFBH84X121	5420	6884	N/A		80	189 1/2				112	5324
11SFBH45X132	2917	3748	5068	132	45	157 1/2	97	105 1/2	84 1/2	73	4794
11SFBH60X132	4092	5266	7009		60	172 1/2				88	5177
11SFBH84X132	5913	7510	N/A		80	196 1/2				112	5711
12SFBH45X144	3182	4089	5529	144	45	157 1/2	105 1/2	105 1/2	84 1/2	73	5106
12SFBH60X144	4464	5745	7646		60	172 1/2				88	5509
12SFBH84X144	6451	8193	N/A		80	196 1/2				112	6068
12SFBH45X156	3447	4430	5990	156	45	165	105 1/2	114	92	73	5592
12SFBH60X156	4836	6224	8283		60	180				88	6015
12SFBH84X156	6988	8876	N/A		80	204				112	6599
13SFBH45X169	3735	4799	6489	169	45	165	114	114	92	73	5899
13SFBH60X169	5239	6743	8974		60	180				88	6344
13SFBH84X169	7571	9616	N/A		80	204				112	6955
13SFBH45X182	4022	5168	6988	182	45	172 1/2	114	122 1/2	99 1/2	73	6304
13SFBH60X182	5642	7262	9664		60	187 1/2				88	6777
13SFBH84X182	8153	10355	N/A		80	211 1/2				112	7425



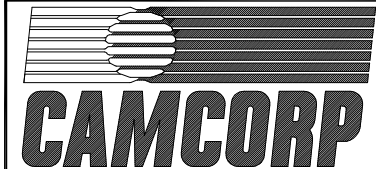
- ### STANDARD FEATURES
1. ALL WELDED HEAVY-DUTY CONSTRUCTION
 2. PRESSURE/VACUUM RATING: +/-20"W.C.
 3. STANDARD MATERIALS OF CONSTRUCTION: CARBON STEEL, STAINLESS STEEL, ALUMINUM
 4. STANDARD ELECTRICALS: NEMA 4 TIMER AND SOLENOID ENCLOSURES
 5. PAINT: STANDARD IS WHITE OR ENVIROGREEN INDUSTRIAL ENAMEL

- ### OPTIONAL FEATURES
1. STRUCTURAL SUPPORTS
 2. SERVICE PLATFORMS
 3. EXPLOSION VENTING
 4. EXPLOSION-PROOF ELECTRICALS
 5. HIGHER PRESSURE/VACUUM RATING
 6. BIN VENT STYLE
 7. WIDE CARTRIDGE SPACING



BOTTOM REMOVAL CARTRIDGE DUST COLLECTOR (64 TO 182 CARTRIDGES)

REV. 1	10/03/01	CHG'D. DRAWING
REV. 2	1/12/04	CHG'D. FILTER AREA SQ. FT.



9732 PFLUMM, LENEXA, KS 66215 PHONE: 913-831-0740 • FAX: 913-831-9271

TITLE: BOTTOM REMOVAL CARTRIDGE DUST COLLECTORS
MODEL 8SFBH45X64-35P TO 13SFBH84X182-45P (64 TO 182 CARTRIDGES)

DATE:	DRN BY:	DWG. NO.:	P.S.:	REV.:
08/10/99	DES	CAT-BCA2r02	36-00	#2