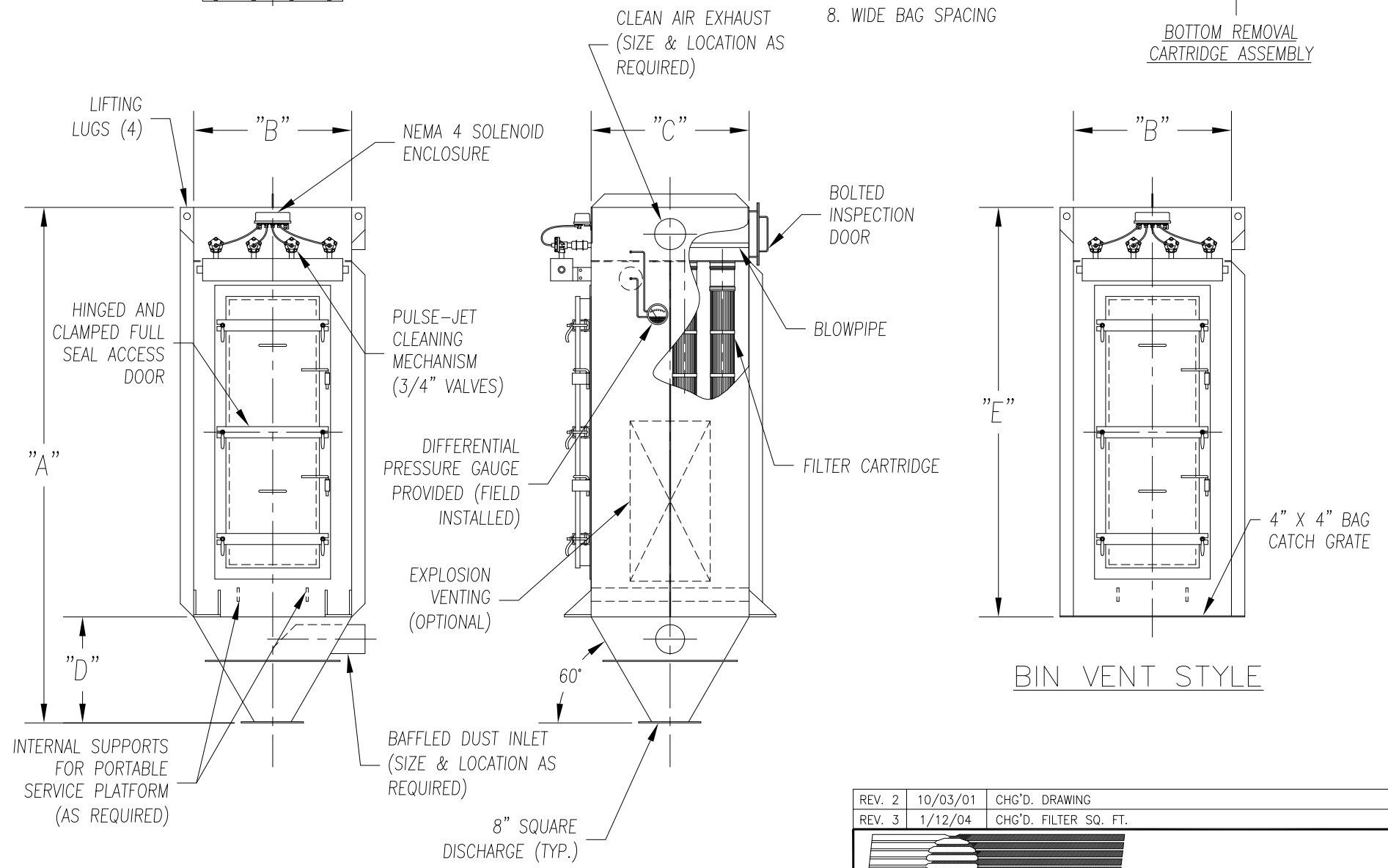
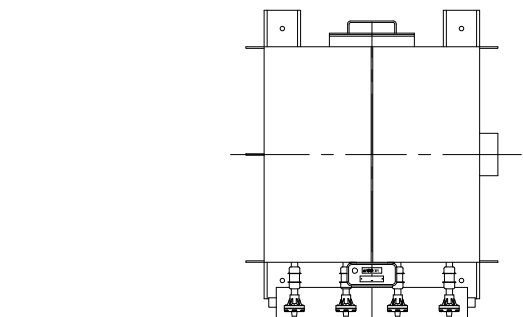


CAMCORP MODELS 3SFBH45X9 TO 7SFBH84X63

MODEL NUMBER	FILTER AREA (SQ. FT.)			QUAN. OF CARTS	CARTRIDGE LENGTH (INCHES)	DIMENSIONS (INCHES)					EST. INSTALLED WT.
	35 PLEATS	45 PLEATS	60 PLEATS			A	B	C	D	E	
3SFBH45X9	200	255	345	9	45	83 1/2	29	29	18 1/2	65	559
3SFBH60X9	279	359	477		60	98 1/2				80	639
3SFBH84X9	403	512	N/A		80	122 1/2				104	759
3SFBH45X12	265	340	460	12	45	91	29	37 1/2	26	65	683
3SFBH60X12	372	478	637		60	106				80	776
3SFBH84X12	537	682	N/A		80	130				104	910
3SFBH45X15	331	426	576	15	45	98	29	46	33	65	791
3SFBH60X15	465	598	795		60	113				80	892
3SFBH84X15	672	853	N/A		80	137				104	1046
4SFBH45X16	353	454	614	16	45	91	37 1/2	37 1/2	26	65	803
4SFBH60X16	496	638	848		60	106				80	905
4SFBH84X16	717	910	N/A		80	130				104	1060
4SFBH45X20	442	568	768	20	45	98	37 1/2	46	33	65	924
4SFBH60X20	620	798	1062		60	113				80	1039
4SFBH84X20	896	1138	N/A		80	137				104	1211
4SFBH45X24	530	681	921	24	45	105 1/2	37 1/2	54 1/2	40 1/2	65	1089
4SFBH60X24	744	957	1274		60	120 1/2				80	1223
4SFBH84X24	1075	1365	N/A		80	144 1/2				104	1423
5SFBH45X25	552	710	960	25	45	98	46	46	33	65	1055
5SFBH60X25	775	997	1327		60	113				80	1183
5SFBH84X25	1120	1422	N/A		80	137				104	1373
5SFBH45X30	663	852	1152	30	45	105 1/2	46	54 1/2	40 1/2	65	1236
5SFBH60X30	930	1197	1593		60	120 1/2				80	1384
5SFBH84X30	1344	1707	N/A		80	144 1/2				104	1603
5SFBH45X35	773	994	1344	35	45	113	46	63	48	65	1412
5SFBH60X35	1085	1396	1858		60	128				80	1574
5SFBH84X35	1568	1991	N/A		80	152				104	1811
6SFBH45X36	795	1022	1382	36	45	105 1/2	54 1/2	54 1/2	40 1/2	65	1429
6SFBH60X36	1116	1436	1911		60	120 1/2				80	1598
6SFBH84X36	1612	2048	N/A		80	144 1/2				104	1847
6SFBH45X42	928	1192	1612	42	45	113	54 1/2	63	48	65	1624
6SFBH60X42	1382	1675	2230		60	128				80	1807
6SFBH84X42	1881	2389	N/A		80	152				104	2075
6SFBH45X48	1060	1363	1843	48	45	120	54 1/2	71 1/2	55	65	1790
6SFBH60X48	1488	1915	2548		60	135				80	1988
6SFBH84X48	2150	2731	N/A		80	159				104	2275
7SFBH45X49	1083	1391	1881	49	45	113	63	63	48	65	1788
7SFBH60X49	1519	1955	2602		60	128				80	1987
7SFBH84X49	2195	2788	N/A		80	152				104	2275
7SFBH45X56	1237	1590	2150	56	45	120	63	71 1/2	55	65	1969
7SFBH60X56	1736	2234	2973		60	135				80	2183
7SFBH84X56	2508	3186	N/A		80	159				104	2492
7SFBH45X63	1392	1789	2419	63	45	127 1/2	63	80	62 1/2	65	2662
7SFBH60X63	1953	2513	3345		60	142 1/2				80	2898
7SFBH84X63	2822	3584	N/A		80	166 1/2				104	3238



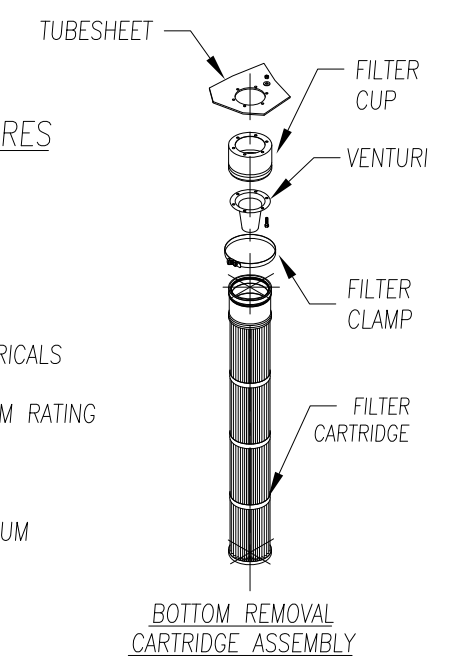
BOTTOM REMOVAL CARTRIDGE DUST COLLECTOR ( 9 TO 63 CARTRIDGES )

STANDARD FEATURES

1. ALL WELDED HEAVY-DUTY CONSTRUCTION
2. PRESSURE/VACUUM RATING: +/-20"W.C.
3. STANDARD MATERIALS OF CONSTRUCTION: CARBON STEEL, STAINLESS STEEL, ALUMINUM
4. STANDARD ELECTRICALS: NEMA 4 TIMER AND SOLENOID ENCLOSURES
5. PAINT: STANDARD IS WHITE OR ENVIROGREEN INDUSTRIAL ENAMEL

OPTIONAL FEATURES

1. STRUCTURAL SUPPORTS
2. SERVICE PLATFORMS
3. EXPLOSION VENTING
4. EXPLOSION-PROOF ELECTRICALS
5. HIGHER PRESSURE/VACUUM RATING
6. BIN VENT STYLE
7. WALK-IN CLEAN AIR PLENUM
8. WIDE BAG SPACING



REV. 2	10/03/01	CHG'D. DRAWING
REV. 3	1/12/04	CHG'D. FILTER SQ. FT.
9732 PFLUMM, LENEXA, KS 66215      PHONE: 913-831-0740   FAX: 913-831-9271		
TITLE: BOTTOM REMOVAL CARTRIDGE DUST COLLECTORS MODEL 3SFBH45X9 TO 7SFBH84X63 (9 TO 63 CARTRIDGES)		
DATE:	DRN BY:	DWG. NO.:
4/8/98	DES	CAT-BCA1r03
P.S.:	REV.:	
32-00	#3	