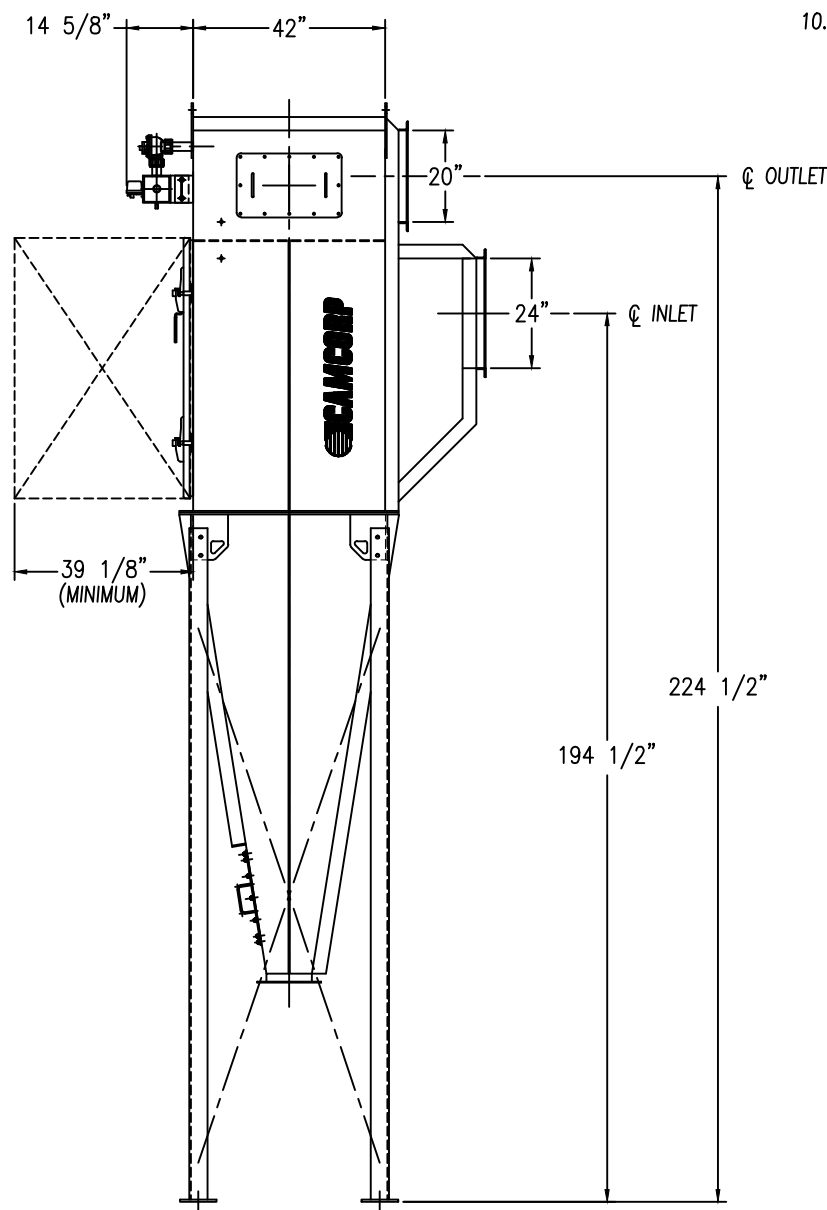
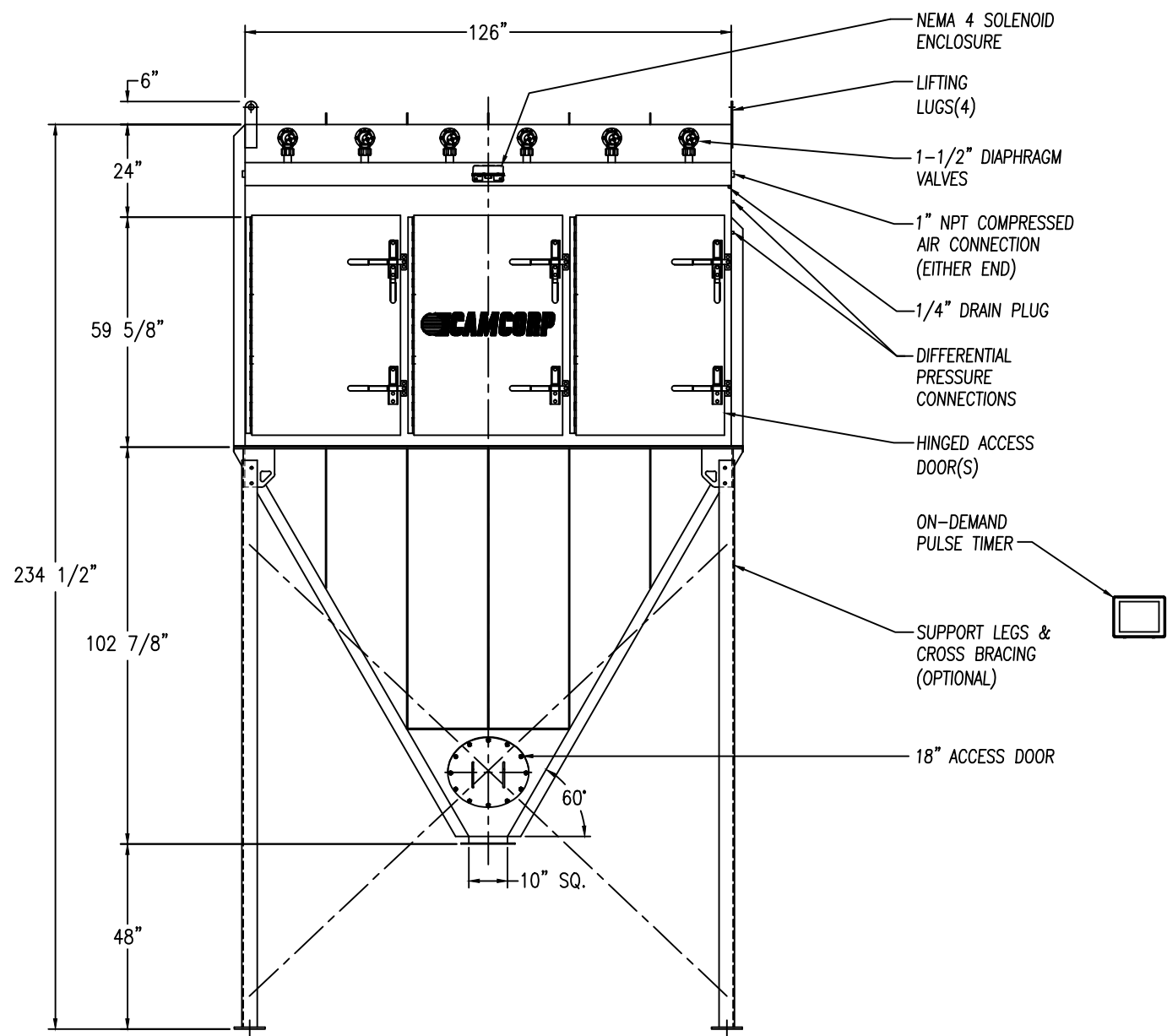
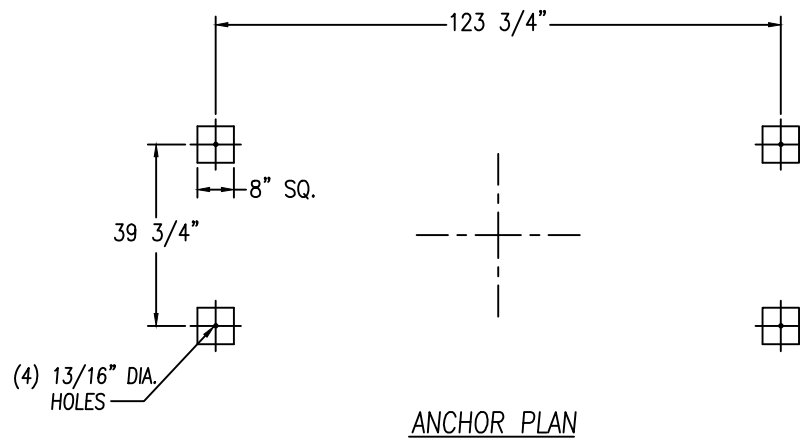
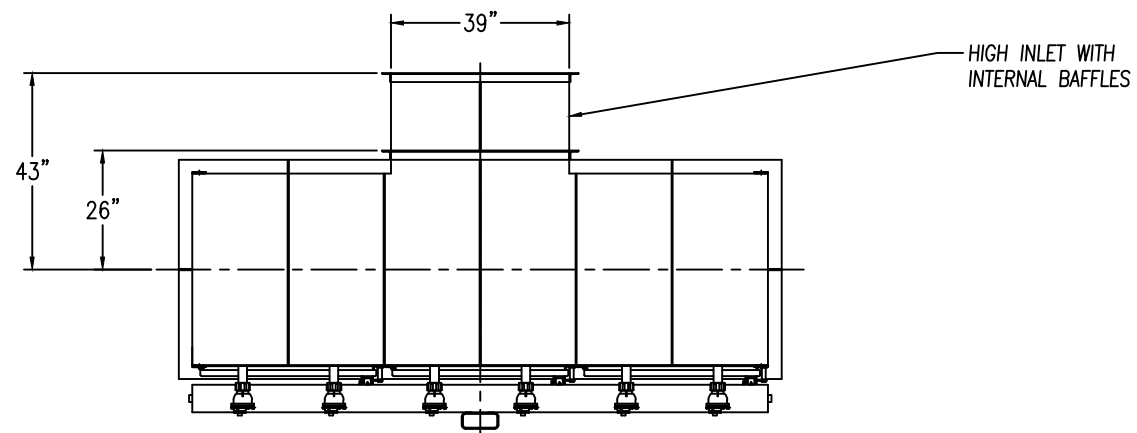



STANDARD FEATURES

1. ALL WELDED HEAVY-DUTY CARBON STEEL CONSTRUCTION
  2. HOUSING RATED FOR: +/-25" W.C.
  3. INTERIOR DIRTY AIR PLENUM PRIMED ONLY
  4. EXTERIOR PRIMED & FINISHED PAINTED WHITE INDUSTRIAL ENAMEL
  5. (12) CARTRIDGE ELEMENTS FACTORY INSTALLED
- STANDARD 3,900 SQ.FT. OF 80/20 CELLULOSE/SYNTHETIC BLEND FILTER MEDIA  
 OPTIONAL 2,940 SQ.FT. OF POLY-EL SPUN BOND POLYESTER FILTER MEDIA
6. APPROX. AIR CONSUMPTION OF 6.0 SCF PER VALVE PER PULSE OF CLEAN, DRY, OIL FREE COMPRESSED AIR AT 80-90 PSIG
  7. NEMA 4 ELECTRICAL ENCLOSURES (TIMER ENCLOSURE SHIPS LOOSE FOR REMOTE MOUNTING)
  8. 120/1/60 VAC REQUIRED
  9. ESTIMATED INSTALLED WEIGHT = 4,975 LBS
  10. SOME FIELD ASSEMBLY REQUIRED

OPTIONAL FEATURES

1. STRUCTURAL SUPPORTS
2. SERVICE PLATFORMS
3. EXPLOSION VENTING
4. EXPLOSION-PROOF ELECTRICALS
5. HIGHER PRESSURE/VACUUM RATINGS
6. FILTER MEDIAS/PRE-FILTER OVERBAGS



REV 1	REISSUED	DB
 <b>CAMCORP</b> <small>www.camcorpinc.com</small>		
<small>CAMCORP INC.</small> <small>PHONE: 913-831-0740 • FAX: 913-831-9271</small>		
TITLE: VERTICAL CARTRIDGE DUST COLLECTOR MODEL CA12-3D		
DATE: 9/01/09	DRN BY: DB	DWG. NO.: CAT-CA12-3D
P.S.:	REV.:	1