

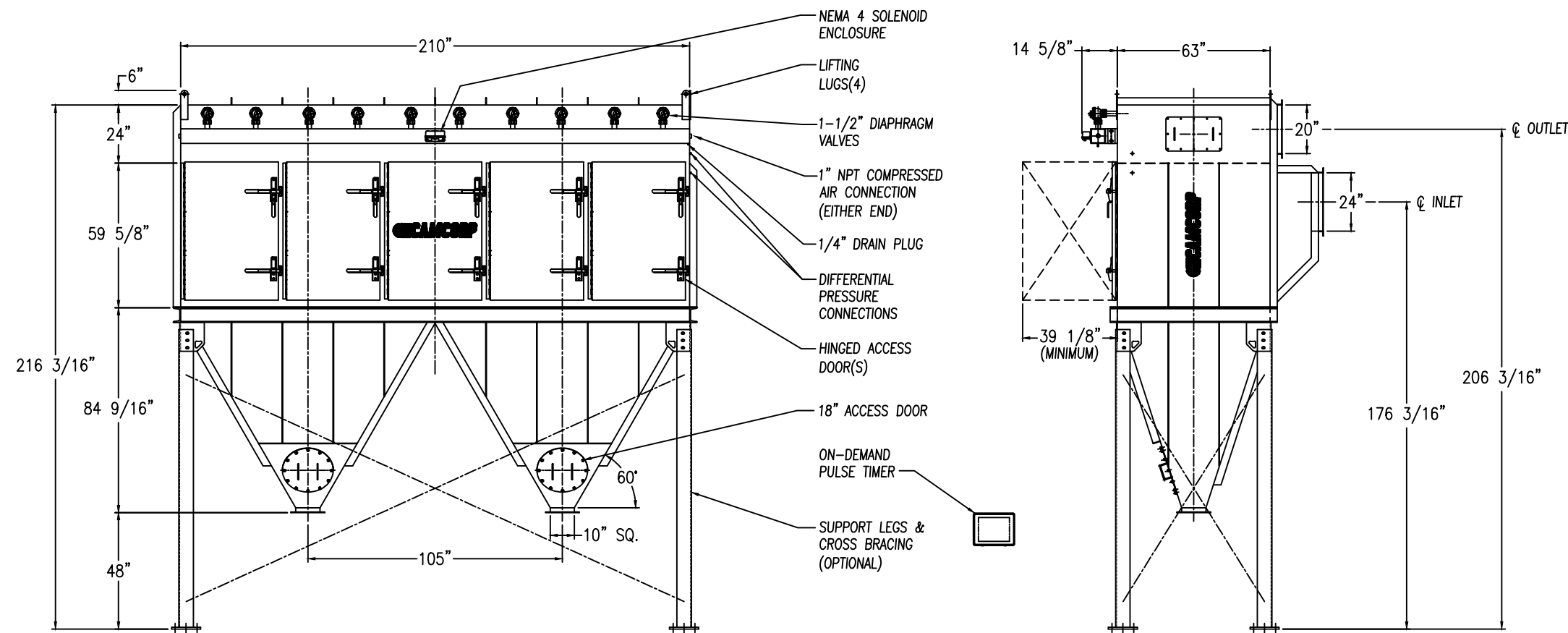
ANCHOR PLAN


STANDARD FEATURES

1. ALL WELDED HEAVY-DUTY CARBON STEEL CONSTRUCTION
2. HOUSING RATED FOR: +/-25" W.C.
3. INTERIOR DIRTY AIR PLENUM PRIMED ONLY
4. EXTERIOR PRIMED & FINISHED PAINTED WHITE INDUSTRIAL ENAMEL
5. (30) CARTRIDGE ELEMENTS FACTORY INSTALLED
 STANDARD 9,750 SQ.FT. OF 80/20 CELLULOSE/SYNTHETIC BLEND FILTER MEDIA
 OPTIONAL 7,350 SQ.FT. OF POLY-EL SPUN BOND POLYESTER FILTER MEDIA
6. APPROX. AIR CONSUMPTION OF 6.0 SCF PER VALVE PER PULSE OF CLEAN, DRY, OIL FREE COMPRESSED AIR AT 80-90 PSIG
7. NEMA 4 ELECTRICAL ENCLOSURES (TIMER ENCLOSURE SHIPS LOOSE FOR REMOTE MOUNTING)
8. 120/1/60 VAC REQUIRED
9. ESTIMATED INSTALLED WEIGHT = 9,710 LBS
10. SOME FIELD ASSEMBLY REQUIRED

OPTIONAL FEATURES

1. STRUCTURAL SUPPORTS
2. SERVICE PLATFORMS
3. EXPLOSION VENTING
4. EXPLOSION-PROOF ELECTRICALS
5. HIGHER PRESSURE/VACUUM RATINGS
6. FILTER MEDIAS/PRE-FILTER OVERBAGS



| | | |
|--|---------------|-----------------------------|
| REV 1 | REISSUED | DB |
|  CAMCORP INC. <small>www.camcorpinc.com PHONE: 913-831-0740 • FAX: 913-831-9271</small> | | |
| TITLE: VERTICAL CARTRIDGE DUST COLLECTOR MODEL CA30-5D-MH | | |
| DATE: 9/01/09 | DRN BY: DB | DWG. NO.: CAT-CA30-5D-MH |
| P.S.: | REV.: | 1 |