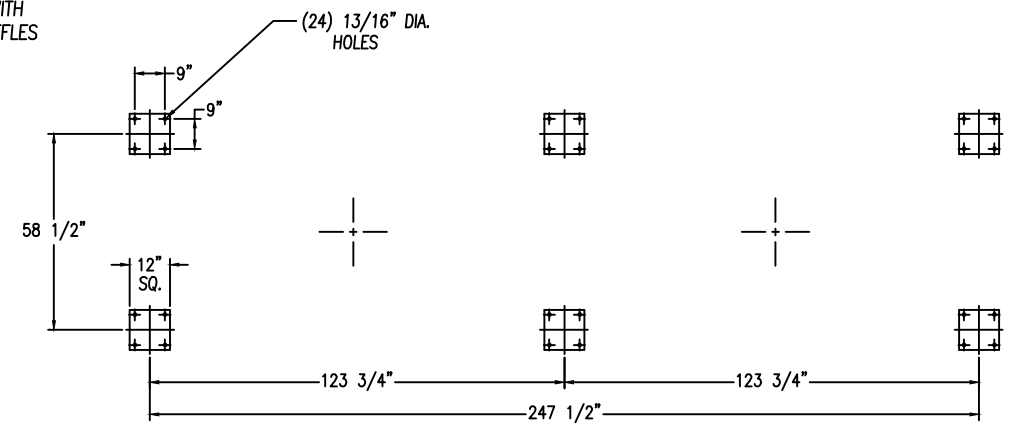
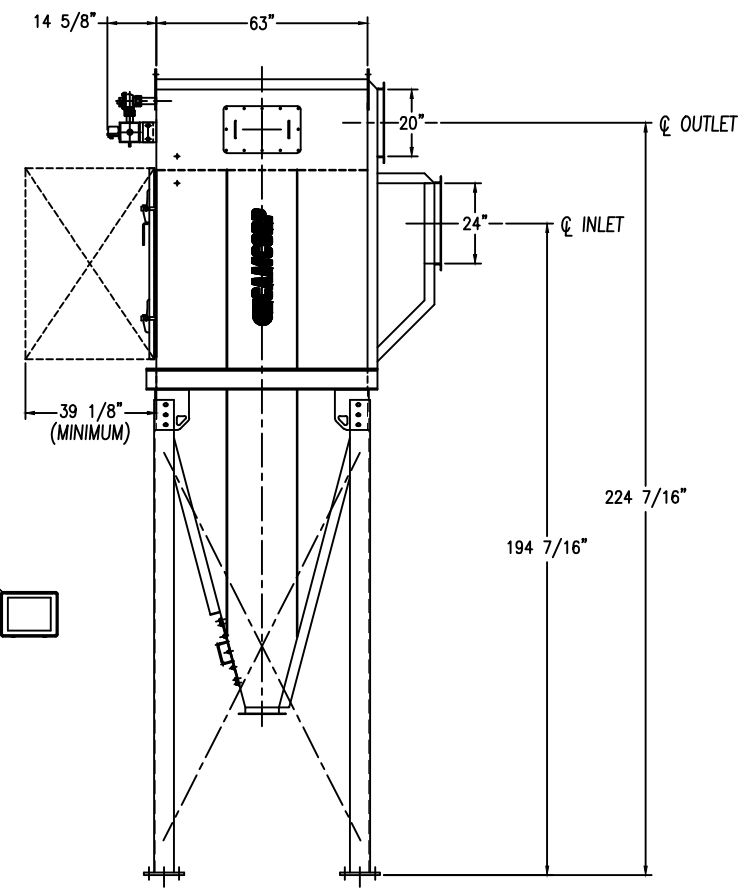
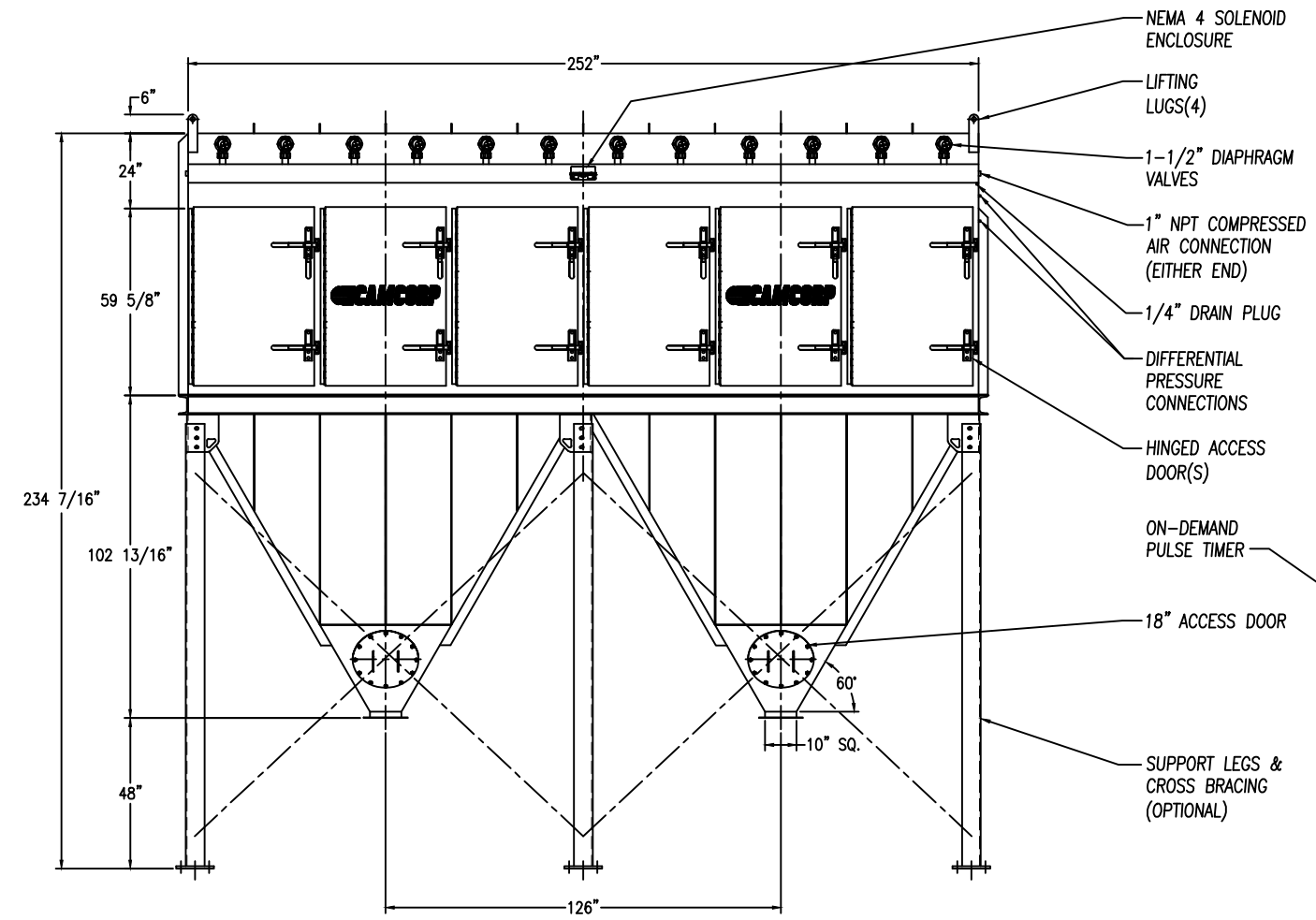


HIGH INLET WITH INTERNAL BAFFLES




ANCHOR PLAN

- STANDARD FEATURES**
1. ALL WELDED HEAVY-DUTY CARBON STEEL CONSTRUCTION
  2. HOUSING RATED FOR: +/-25" W.C.
  3. INTERIOR DIRTY AIR PLENUM PRIMED ONLY
  4. EXTERIOR PRIMED & FINISHED PAINTED WHITE INDUSTRIAL ENAMEL
  5. (36) CARTRIDGE ELEMENTS FACTORY INSTALLED  
STANDARD 11,700 SQ.FT. OF 80/20 CELLULOSE/SYNTHETIC BLEND FILTER MEDIA  
OPTIONAL 8,820 SQ.FT. OF POLY-EL SPUN BOND POLYESTER FILTER MEDIA
  6. APPROX. AIR CONSUMPTION OF 6.0 SCF PER VALVE PER PULSE OF CLEAN, DRY, OIL FREE COMPRESSED AIR AT 80-90 PSIG
  7. NEMA 4 ELECTRICAL ENCLOSURES (TIMER ENCLOSURE SHIPS LOOSE FOR REMOTE MOUNTING)
  8. 120/1/60 VAC REQUIRED
  9. ESTIMATED INSTALLED WEIGHT = 12,360 LBS
  10. SOME FIELD ASSEMBLY REQUIRED



- OPTIONAL FEATURES**
1. STRUCTURAL SUPPORTS
  2. SERVICE PLATFORMS
  3. EXPLOSION VENTING
  4. EXPLOSION-PROOF ELECTRICALS
  5. HIGHER PRESSURE/VACUUM RATINGS
  6. FILTER MEDIA/PRE-FILTER OVERBAGS

REV 1	REISSUED	DB
 <b>CAMCORP INC.</b> <small>PHONE: 913-831-0740 • FAX: 913-831-9271</small>		
TITLE: VERTICAL CARTRIDGE DUST COLLECTOR MODEL CA36-6D-MH		
DATE: 9/01/09	DRN BY:	DWG. NO.: CAT-CA36-6D-MH
P.S.:	REV.:	1