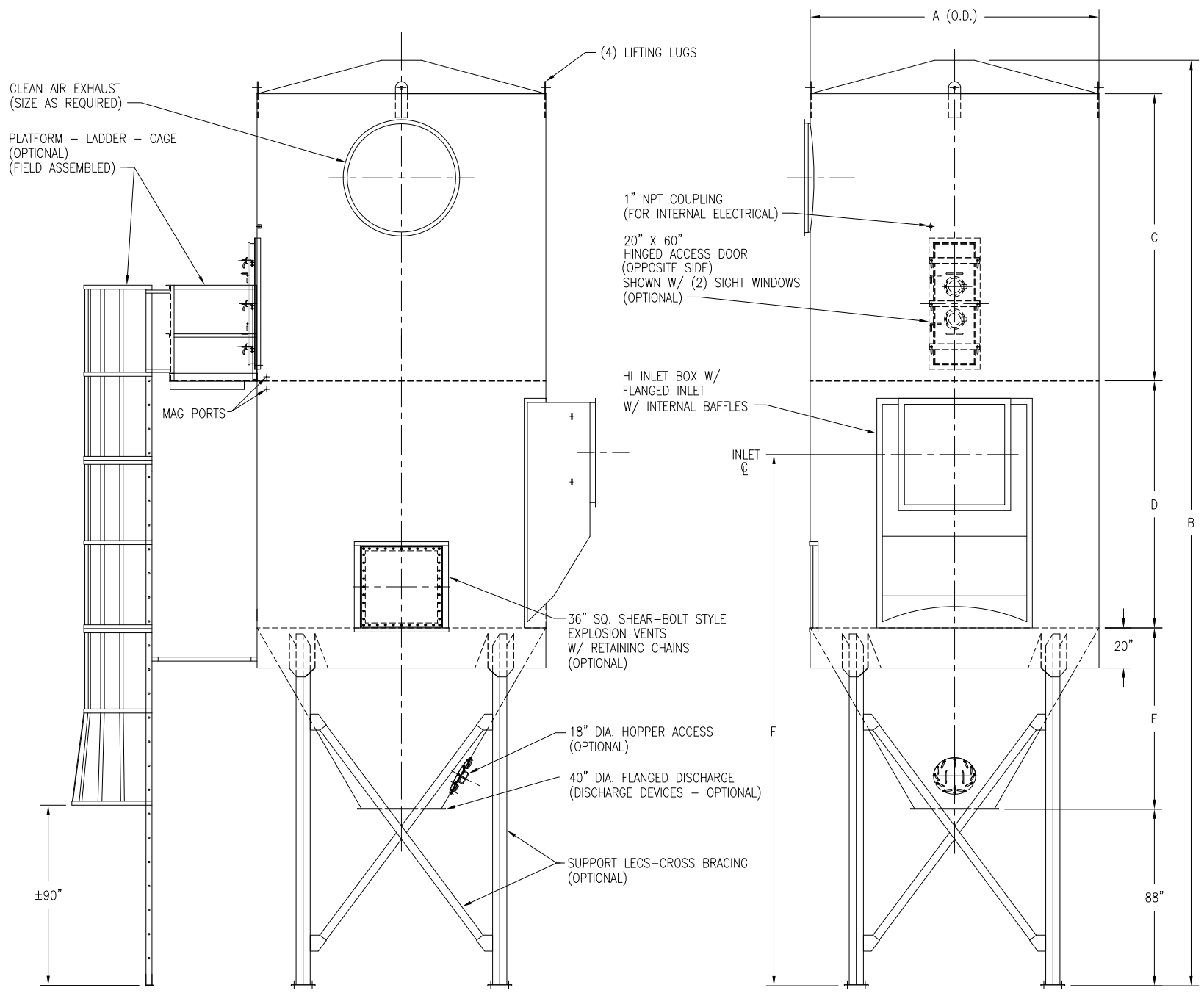


NUMEROUS ORIENTATIONS - CONFIGURATIONS AVAILABLE



| MODEL 6SWF48 THRU 12SWF504 | | | | | | | | | | | | | | | | |
|----------------------------|------------------------|---------------|---------------------|-----------------|---------------------|----------|---------|---------|-----------|-----------|-----------|-----------|----------------------|----------------------|-------------------------|-------|
| MODEL NUMBER | FILTER MEDIA (SQ. FT.) | QUAN. OF BAGS | BAG LENGTH (IN FT.) | MAT'L OF CONST. | DIMENSIONS (INCHES) | | | | | | | | REVERSE AIR FAN H.P. | # OF EXPLOSION VENTS | EST. INSTALLED WT./LBS. | |
| | | | | | A | B | C | D | E | F | G | H | | | | |
| 6SWF48 | 348 | 48 | 6 | 12 GA. | 60 | 281 9/16 | 95 1/4 | 75 1/4 | 17 11/16 | 164 15/16 | 16 | 40 1/8 | 5 HP | 1 * | 4884 | |
| 8SWF48 | 464 | | 8 | | | 329 9/16 | 119 1/4 | 99 1/4 | | | 187 15/16 | | 18 | 5 HP | 1 * | 5468 |
| 10SWF48 | 581 | | 10 | | | 377 9/16 | 143 1/4 | 123 1/4 | | | 210 15/16 | | 20 | 5 HP | 1 * | 6054 |
| 6SWF80 | 580 | 80 | 6 | 12 GA. | 72 | 293 9/16 | 95 1/4 | 75 1/4 | 28 1/16 | 173 5/16 | 20 | 48 5/8 | 5 HP | 1 | 5408 | |
| 8SWF80 | 774 | | 8 | | | 341 9/16 | 119 1/4 | 99 1/4 | | | 196 5/16 | | 22 | 5 HP | 1 | 6097 |
| 10SWF80 | 968 | | 10 | | | 389 9/16 | 143 1/4 | 123 1/4 | | | 219 5/16 | | 24 | 5 HP | 1 | 6790 |
| 8SWF112 | 1084 | 112 | 8 | 10 GA. | 84 | 353 9/16 | 119 1/4 | 99 1/4 | 38 1/2 | 204 1/4 | 27 | 57 1/16 | 5 HP | 1 | 7461 | |
| 10SWF112 | 1355 | | 10 | | | 401 9/16 | 143 1/4 | 123 1/4 | | | 226 3/4 | | 30 | 7.5 HP | 1 | 8384 |
| 12SWF112 | 1626 | | 12 | | | 425 9/16 | 143 1/4 | 147 1/4 | | | 249 1/4 | | 33 | 7.5 HP | 1 | 9056 |
| 8SWF152 | 1471 | 152 | 8 | 10 GA. | 96 | 365 9/16 | 119 1/4 | 99 1/4 | 48 7/8 | 213 1/8 | 30 | 65 9/16 | 7.5 HP | 1 | 8506 | |
| 10SWF152 | 1839 | | 10 | | | 413 9/16 | 143 1/4 | 123 1/4 | | | 235 5/8 | | 33 | 7.5 HP | 2 | 9612 |
| 12SWF152 | 2207 | | 12 | | | 437 9/16 | 143 1/4 | 147 1/4 | | | 258 1/8 | | 36 | 10 HP | 2 | 10382 |
| 8SWF200 | 1936 | 200 | 8 | 10 GA. | 108 | 377 9/16 | 119 1/4 | 99 1/4 | 59 1/4 | 222 | 33 | 72 9/16 | 7.5 HP | 2 | 10324 | |
| 10SWF200 | 2420 | | 10 | | | 425 9/16 | 143 1/4 | 123 1/4 | | | 243 1/2 | | 38 | 10 HP | 2 | 11354 |
| 12SWF200 | 2904 | | 12 | | | 449 9/16 | 143 1/4 | 147 1/4 | | | 265 1/2 | | 42 | 10 HP | 2 | 12263 |
| 8SWF256 | 2478 | 256 | 8 | 10 GA. | 120 | 389 9/16 | 119 1/4 | 99 1/4 | 69 11/16 | 229 15/16 | 38 | 81 1/16 | 7.5 HP | 2 | 11485 | |
| 10SWF256 | 3097 | | 10 | | | 437 9/16 | 143 1/4 | 123 1/4 | | | 251 15/16 | | 42 | 10 HP | 2 | 12856 |
| 12SWF256 | 3717 | | 12 | | | 461 9/16 | 143 1/4 | 147 1/4 | | | 273 15/16 | | 46 | 15 HP | 3 | 13858 |
| 8SWF312 | 3020 | 312 | 8 | 10 GA. | 132 | 401 9/16 | 119 1/4 | 99 1/4 | 80 1/16 | 238 5/16 | 42 | 89 9/16 | 10 HP | 2 | 12908 | |
| 10SWF312 | 3775 | | 10 | | | 449 9/16 | 143 1/4 | 123 1/4 | | | 260 5/16 | | 46 | 10 HP | 3 | 14406 |
| 12SWF312 | 4530 | | 12 | | | 473 9/16 | 143 1/4 | 147 1/4 | | | 282 5/16 | | 50 | 15 HP | 3 | 15565 |
| 8SWF368 | 3562 | 368 | 8 | 10 GA. | 144 | 413 9/16 | 119 1/4 | 99 1/4 | 90 7/16 | 246 11/16 | 46 | 98 1/16 | 10 HP | 3 | 14275 | |
| 10SWF368 | 4452 | | 10 | | | 461 9/16 | 143 1/4 | 123 1/4 | | | 268 11/16 | | 50 | 15 HP | 3 | 15932 |
| 12SWF368 | 5343 | | 12 | | | 485 9/16 | 143 1/4 | 147 1/4 | | | 290 11/16 | | 54 | 15 HP | 4 | 17216 |
| 8SWF432 | 4182 | 432 | 8 | 3/16" R | 156 | 425 9/16 | 119 1/4 | 99 1/4 | 100 13/16 | 256 1/16 | 48 | 106 7/16 | 10 HP | 3 | 18219 | |
| 10SWF432 | 5227 | | 10 | | | 473 9/16 | 143 1/4 | 123 1/4 | | | 277 1/16 | | 54 | 15 HP | 4 | 20369 |
| 12SWF432 | 6273 | | 12 | | | 497 9/16 | 143 1/4 | 147 1/4 | | | 298 1/16 | | 60 | 20 HP | 4 | 22120 |
| 8SWF504 | 4879 | 504 | 8 | 3/16" R | 168 | 437 9/16 | 119 1/4 | 99 1/4 | 111 1/4 | 263 1/2 | 54 | 114 15/16 | 15 HP | 4 | 20028 | |
| 10SWF504 | 6098 | | 10 | | | 485 9/16 | 143 1/4 | 123 1/4 | | | 284 1/2 | | 60 | 20 HP | 4 | 22446 |
| 12SWF504 | 7318 | | 12 | | | 509 9/16 | 143 1/4 | 147 1/4 | | | 306 1/2 | | 64 | 20 HP | 5 | 24252 |

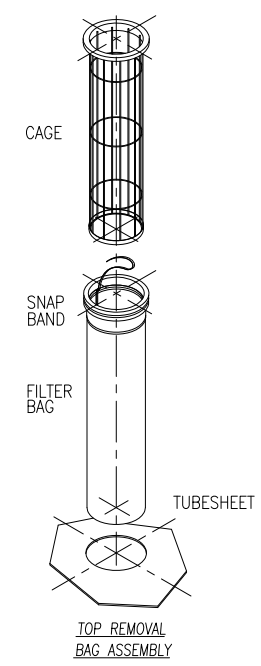
* 24" SQUARE EXPLOSION VENT(S) ON SWF-48 MODELS

STANDARD FEATURES

1. ALL WELDED HEAVY-DUTY CONSTRUCTION
2. PRESSURE/VACUUM RATING: +/-20"W.C.
3. STANDARD MATERIALS OF CONSTRUCTION: CARBON STEEL, STAINLESS STEEL, ALUMINUM
4. PAINT IS STANDARD WHITE OR ENVIROGREEN INDUSTRIAL ENAMEL
5. STANDARD NUMBER OF EXPLOSION VENTS PROVIDE A 65 : 1 VENT RATIO
6. 1/2 HP MOTOR ROTATES INTERNAL CLEANING MECHANISM

OPTIONAL FEATURES

1. INTERMEDIATE SERVICE PLATFORMS
2. EXPLOSION VENTING / RATIOS
3. EXPLOSION-PROOF ELECTRICALS
4. HIGHER PRESSURE/VACUUM RATING
5. BIN VENT STYLE
6. WIDE BAG SPACING



| | | | |
|--|----------------|-----------------|-----------|
| REV | DRAWING STATUS | BY | DATE |
| | | | |
| 9732 PFLUMM, LENEXA, KS 66215 PHONE: 913-831-0740 FAX: 913-831-9271 | | | |
| This drawing and the solutions/designs are the property of CAMCORP, Inc. and are furnished only for informational purposes on a confidential basis. Reproduction, publishing, or other disclosures are on a "NEED TO KNOW" basis only. Any other reproduction requires written authorization by a corporate officer. | | | |
| TITLE: REVERSE AIR DUST COLLECTOR WITH HI-ENTRY INLET | | | |
| DATE: | DRAWN: | DRAWING NUMBER: | REVISION: |
| 9/13/05 | AJH | SWF-HI INLET | |