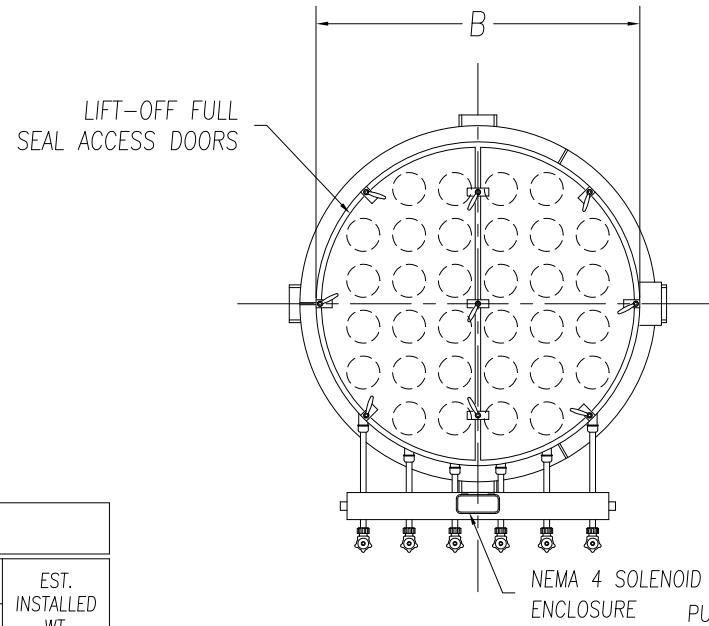
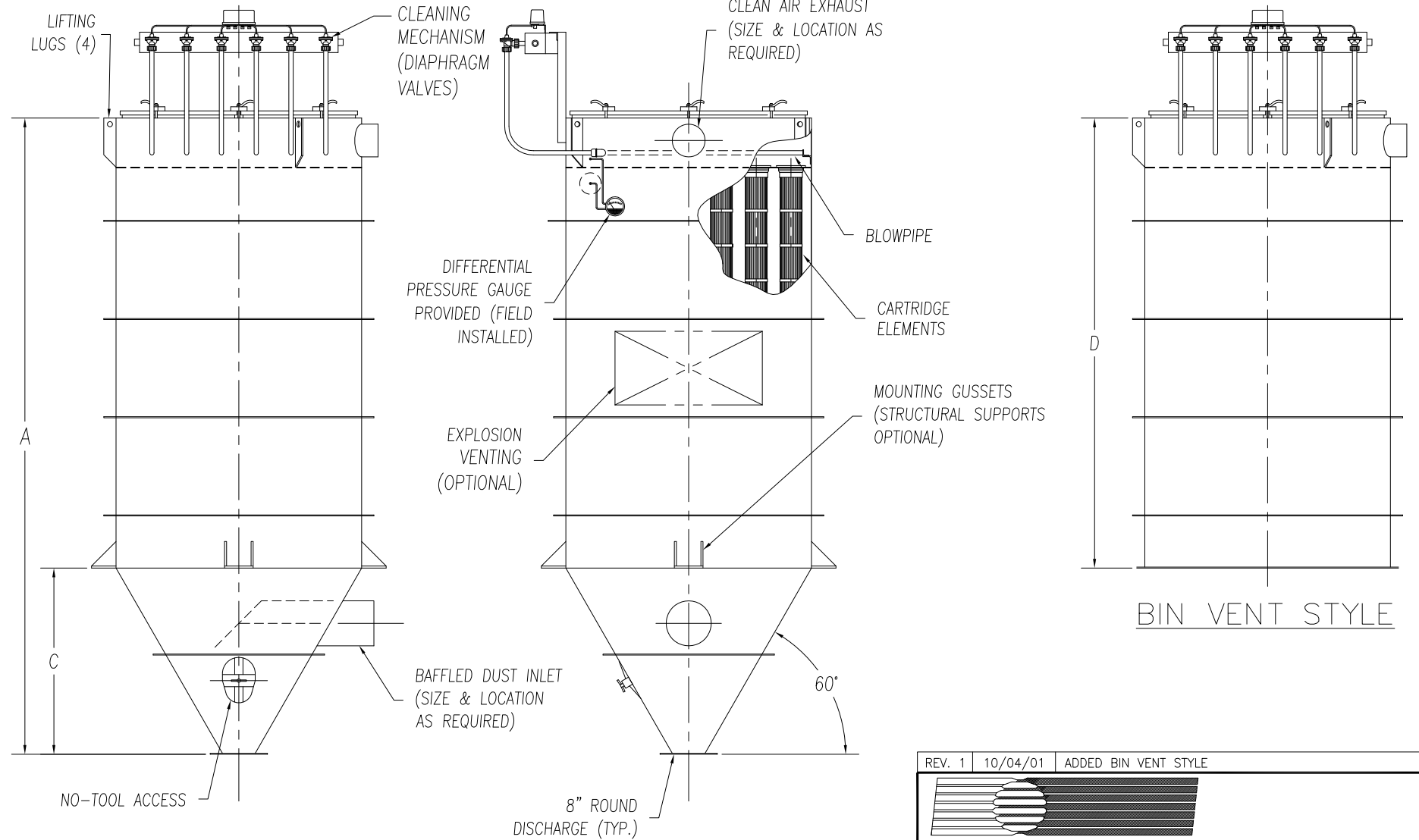
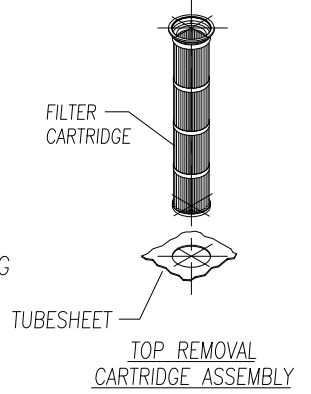


CAMCORP MODELS 45SFPRT4-35P TO 84SFPRT30-45P										
MODEL NUMBER	FILTER AREA (SQ. FT.)			QUAN. OF CARTS	CARTRIDGE LENGTH (INCHES)	DIMENSIONS (INCHES)				EST. INSTALLED WT.
	35 PLEATS	45 PLEATS	60 PLEATS			A	B	C	D	
45SFPRT4	74	94	126	4	45	84 1/8	22	13	71 1/8	425
60SFPRT4	103	132	176		60	99 1/8		13	86 1/8	474
45SFPRT7	129	165	221	7	45	90	28	18	72	591
60SFPRT7	180	232	309		60	105		18	87	655
45SFPRT10	184	236	315	10	45	98	36	25	73	822
60SFPRT10	258	331	441		60	113		25	88	905
84SFPRT10	368	473	N/A		84	137		25	112	1062
45SFPRT14	257	330	441	14	45	101 1/2	40	28	73 1/2	983
60SFPRT14	361	463	617		60	116 1/2		28	88 1/2	1078
84SFPRT14	515	662	N/A		84	140 1/2		28	112 1/2	1256
45SFPRT19	349	448	599	19	45	107 3/8	46	33	74 3/8	1249
60SFPRT19	489	629	838		60	122 3/8		33	89 3/8	1361
84SFPRT19	699	899	N/A		84	146 3/8		33	113 3/8	1567
45SFPRT24	441	566	756	24	45	114 1/4	53	39	75 1/4	1673
60SFPRT24	618	794	1058		60	129 1/4		39	90 1/4	1840
84SFPRT24	883	1135	N/A		84	153 1/4		39	114 1/4	2136
45SFPRT30	552	708	945	30	45	117 3/4	56	42	75 3/4	1896
60SFPRT30	773	993	1323		60	132 3/4		42	90 3/4	2078
84SFPRT30	1103	1419	N/A		84	156 3/4		42	114 3/4	2395



- STANDARD FEATURES**
1. ALL WELDED HEAVY-DUTY CONSTRUCTION
 2. VACUUM RATING: 17" HG
 3. STANDARD MATERIALS OF CONSTRUCTION: CARBON STEEL, STAINLESS STEEL, ALUMINUM
 4. STANDARD ELECTRICALS: NEMA 4 TIMER AND SOLENOID ENCLOSURES
 5. PAINT: STANDARD IS WHITE OR ENVIROGREEN INDUSTRIAL ENAMEL

- OPTIONAL FEATURES**
1. STRUCTURAL SUPPORTS
 2. SERVICE PLATFORMS
 3. EXPLOSION VENTING
 4. EXPLOSION-PROOF ELECTRICALS
 5. HIGHER PRESSURE/VACUUM RATING
 6. BIN VENT STYLE
 7. WIDE CARTRIDGE SPACING
 8. WALK-IN CLEAN AIR PLENUM



TOP REMOVAL CARTRIDGE PNEUMATIC RECEIVER (4 TO 30 CARTRIDGE)

REV. 1	10/04/01	ADDED BIN VENT STYLE
<small>9732 PFLUMM, LENEXA, KS 66215 PHONE: 913-831-0740 • FAX: 913-831-9271</small>		
TITLE: TOP REMOVAL CARTRIDGE PNEUMATIC RECEIVER MODEL 24SFPRT4 TO 84SFPRT30 (4 TO 30 CARTRIDGE)		
DATE: 8-10-99	DRN BY: DES	DWG. NO.: CAT-SFPRT1
P.S.: 36-00	REV.: #1	