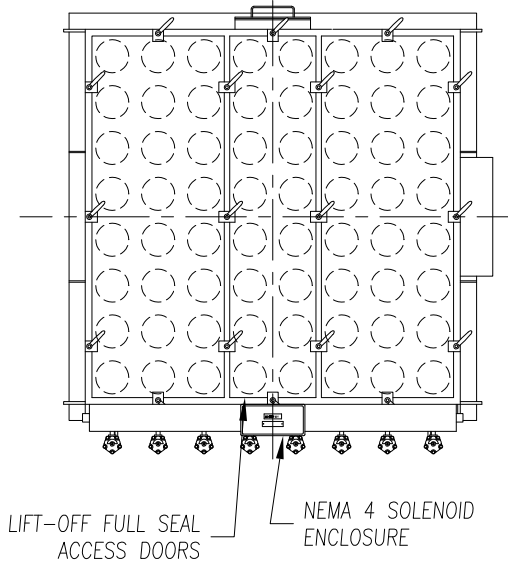
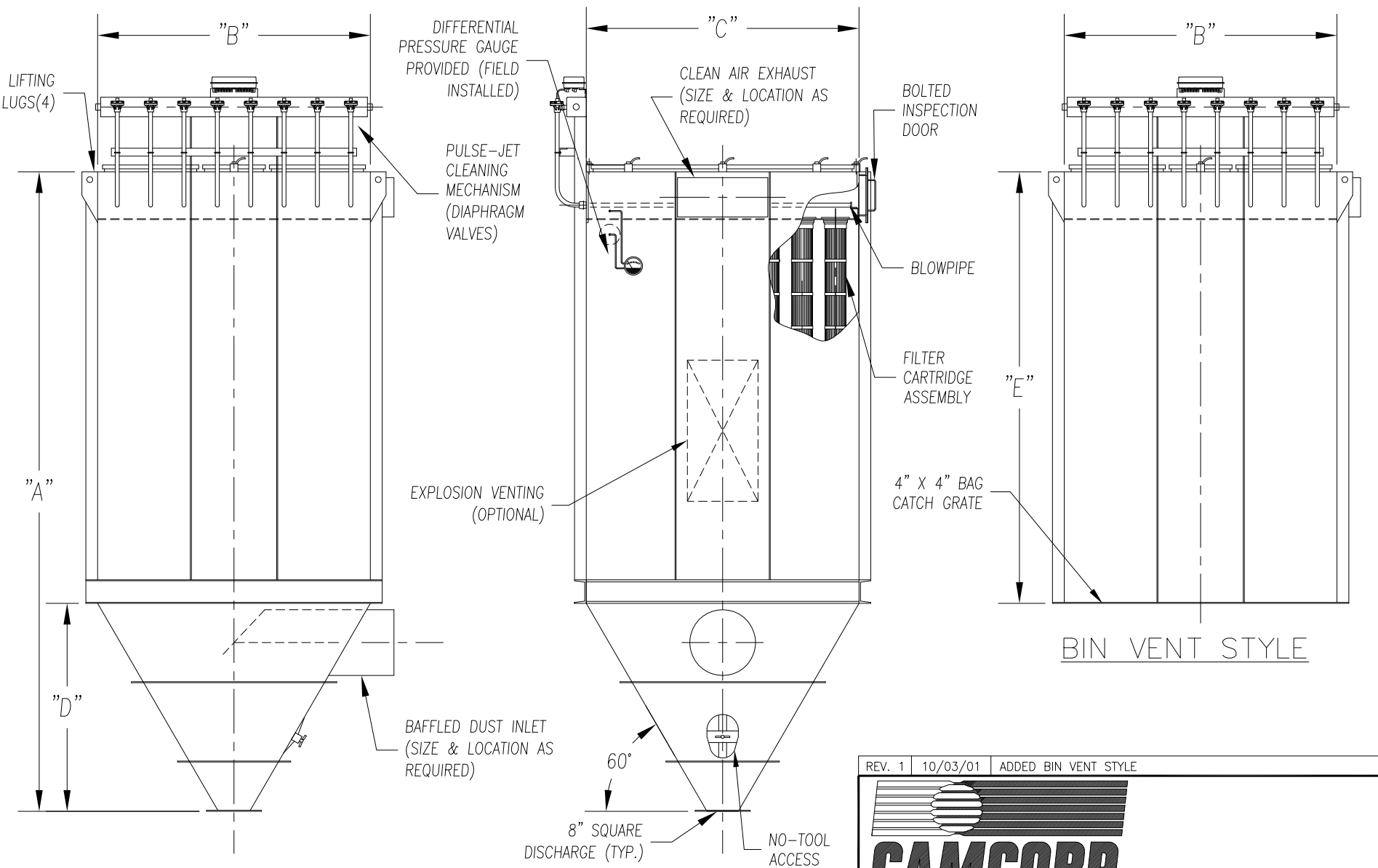
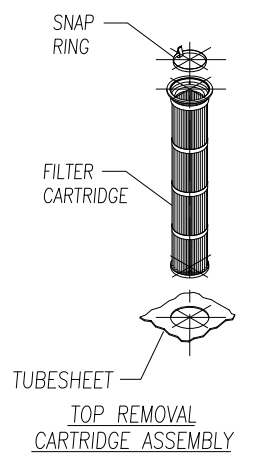


CAMCORP MODELS 8SFTR45X64-35P TO 16SFTR84X256-45P											
MODEL NUMBER	FILTER AREA (SQ. FT.)			QUAN. OF CARTS	CARTRIDGE LENGTH (INCHES)	DIMENSIONS (INCHES)					EST. INSTALLED WT.
	35 PLEATS	45 PLEATS	60 PLEATS			A	B	C	D	E	
8SFTR45X64	1177	1510	2016	64	45	114	71 1/2	71 1/2	55	59	2122
8SFTR60X64	1648	2118	2822		60	129				74	2353
8SFTR84X64	2354	3027	N/A		80	153				98	2683
8SFTR45X72	1324	1699	2268	72	45	121 1/2	71 1/2	80	62 1/2	59	2909
8SFTR60X72	1854	2383	3175		60	136 1/2				74	3162
8SFTR84X72	2648	3406	N/A		80	160 1/2				98	3524
8SFTR45X80	1471	1888	2520	80	45	129	71 1/2	88 1/2	70	59	3142
8SFTR60X80	2060	2648	3528		60	144				74	3411
8SFTR84X80	2942	3784	N/A		80	168				98	3794
9SFTR45X81	1490	1912	2552	81	45	131 1/2	80	80	62 1/2	69	3329
9SFTR60X81	2086	2681	3572		60	146 1/2				84	3606
9SFTR84X81	2979	3831	N/A		80	170 1/2				108	4001
9SFTR45X90	1655	2124	2835	90	45	139	80	88 1/2	70	69	3584
9SFTR60X90	2318	2979	3969		60	154				84	3879
9SFTR84X90	3310	4257	N/A		80	178				108	4296
9SFTR45X99	1821	2336	3119	99	45	146 1/2	80	97	77 1/2	69	3892
9SFTR60X99	2549	3277	4366		60	161 1/2				84	4210
9SFTR84X99	3641	4683	N/A		80	185 1/2				108	4661
10SFTR45X100	1839	2360	3150	100	45	139	88 1/2	88 1/2	70	69	3838
10SFTR60X100	2575	3310	4410		60	154				84	4151
10SFTR84X100	3678	4730	N/A		80	178				108	4591
10SFTR45X110	2023	2596	3465	110	45	146 1/2	88 1/2	97	77 1/2	69	4163
10SFTR60X110	2833	3641	4851		60	161 1/2				84	4501
10SFTR84X110	4046	5203	N/A		80	185 1/2				108	4975
10SFTR45X120	2207	2832	3780	120	45	153 1/2	88 1/2	105 1/2	84 1/2	69	4488
10SFTR60X120	3090	3972	5292		60	168 1/2				84	4844
10SFTR84X120	4414	5676	N/A		80	192 1/2				108	5342
11FTR45X121	2225	2856	3812	121	45	146 1/2	97	97	77 1/2	69	4474
11SFTR60X121	3116	4005	5336		60	161 1/2				84	4838
11SFTR84X121	4450	5723	N/A		80	185 1/2				108	5347
11SFTR45X132	2427	3115	4158	132	45	153 1/2	97	105 1/2	84 1/2	69	4816
11SFTR60X132	3399	4369	5821		60	168 1/2				84	5199
11SFTR84X132	4855	6244	N/A		80	192 1/2				108	5733
12SFTR45X144	2648	3398	4536	144	45	153 1/2	105 1/2	105 1/2	84 1/2	69	5132
12SFTR60X144	3708	4766	6350		60	168 1/2				84	5535
12SFTR84X144	5296	6811	N/A		80	192 1/2				108	6094
12SFTR45X156	2869	3682	4914	156	45	161	105 1/2	114	92	69	5667
12SFTR60X156	4017	5164	6880		60	176				84	6089
12SFTR84X156	5738	7379	N/A		80	200				108	6674
13SFTR45X169	3108	3988	5324	169	45	161	114	114	92	69	5983
13SFTR60X169	4352	5594	7453		60	176				84	6428
13SFTR84X169	6216	7994	N/A		80	200				108	7039
13SFTR45X182	3347	4295	5733	182	45	168 1/2	114	122 1/2	99 1/2	69	6385
13SFTR60X182	4687	6024	8026		60	183 1/2				84	6858
13SFTR84X182	6694	8609	N/A		80	207 1/2				108	7505



- ### STANDARD FEATURES
1. ALL WELDED HEAVY-DUTY CONSTRUCTION
 2. PRESSURE/VACUUM RATING: +/-20"W.C.
 3. STANDARD MATERIALS OF CONSTRUCTION: CARBON STEEL, STAINLESS STEEL, ALUMINUM
 4. STANDARD ELECTRICALS: NEMA 4 TIMER AND SOLENOID ENCLOSURES
 5. PAINT: STANDARD IS WHITE OR ENVIROGREEN INDUSTRIAL ENAMEL

- ### OPTIONAL FEATURES
1. STRUCTURAL SUPPORTS
 2. SERVICE PLATFORMS
 3. EXPLOSION VENTING
 4. EXPLOSION-PROOF ELECTRICALS
 5. HIGHER PRESSURE/VACUUM RATING
 6. BIN VENT STYLE
 7. WALK-IN CLEAN AIR PLENUM
 8. WIDE CARTRIDGE SPACING



TOP REMOVAL CARTRIDGE DUST COLLECTOR (64 TO 182 CARTRIDGES)

REV. 1	10/03/01	ADDED BIN VENT STYLE
CAMCORP		
9732 PFLUMM, LENEXA, KS 66215 PHONE: 913-831-0740 • FAX: 913-831-9271		
TITLE: TOP REMOVAL CARTRIDGE DUST COLLECTOR MODELS 8SFTR45X64-35P TO 13SFTR84X182-45P (64 TO 182 CARTRIDGES)		
DATE: 8-10-99	DRN BY: DES	DWG. NO.: CAT-TCA2
P.S.: 36-00	REV.: #1	