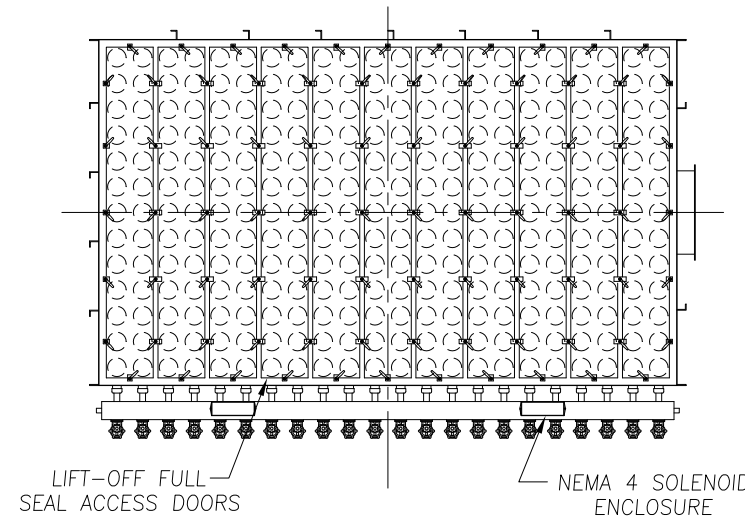


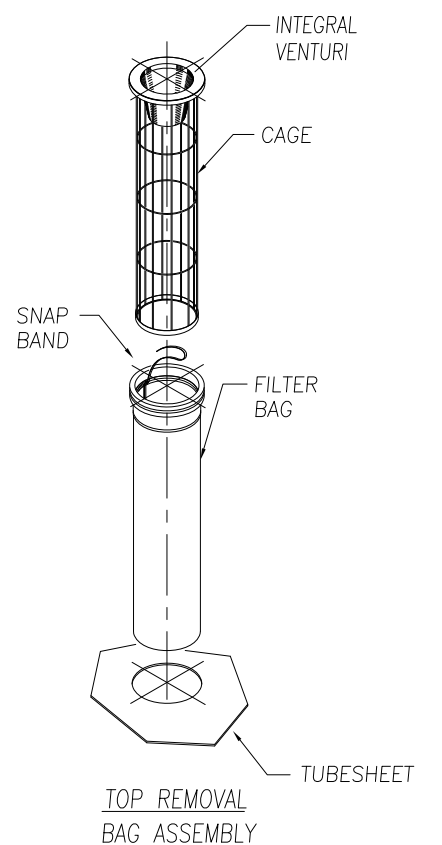
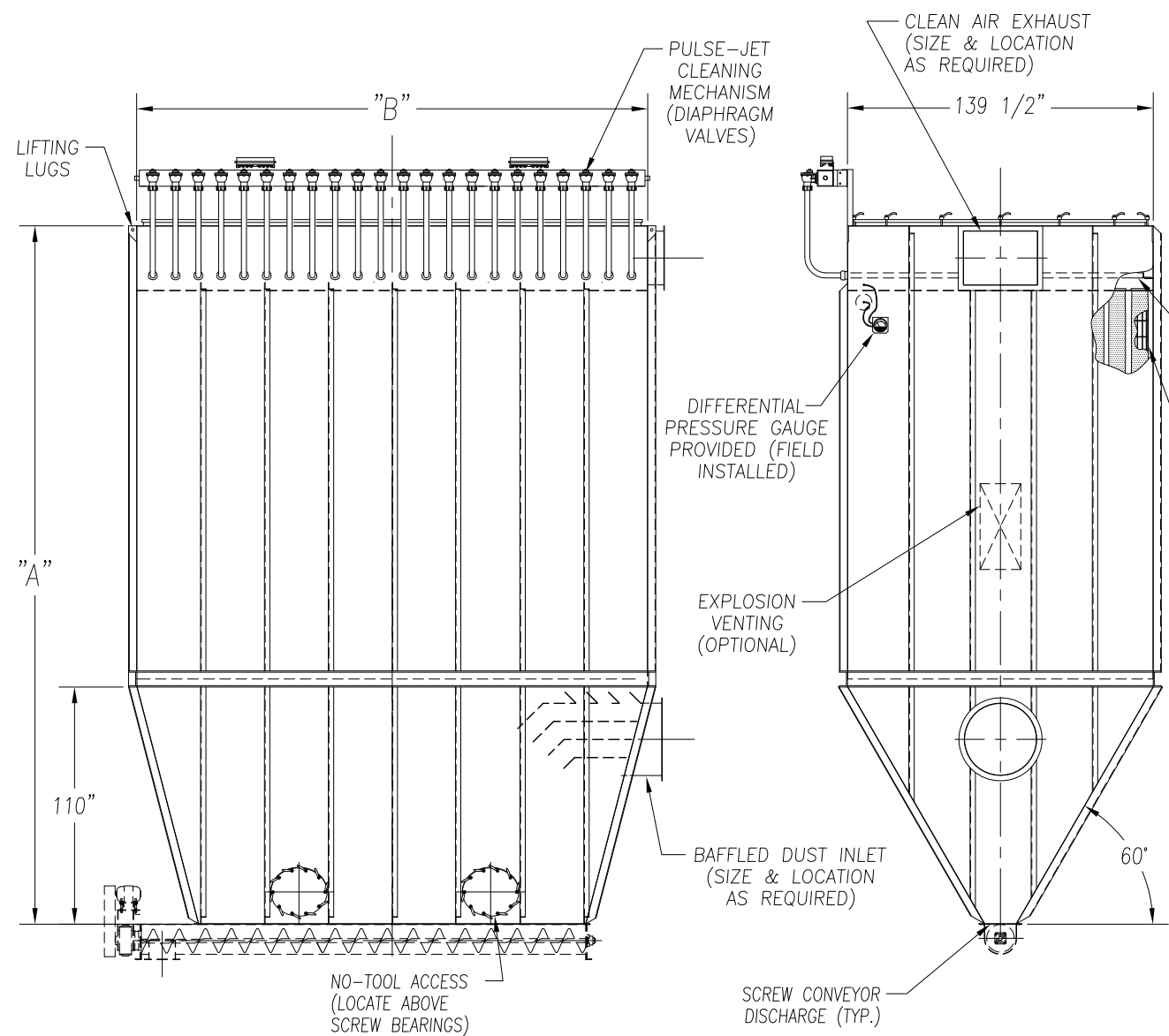
CAMCORP MODELS 47TR8X752 TO 60TR12X960

| MODEL NUMBER | FILTER MEDIA (SQ. FT.) | QUAN. OF BAGS | BAG LENGTH (IN FT.) | DIMENSIONS (INCHES) |         | EST. INSTALLED WT. |
|--------------|------------------------|---------------|---------------------|---------------------|---------|--------------------|
|              |                        |               |                     | A                   | B       |                    |
| 47TR8X752    | 9626                   | 752           | 8                   | 230                 | 403     | 25714              |
| 47TR10X752   | 12032                  |               | 10                  | 254                 |         | 29721              |
| 47TR12X752   | 14438                  |               | 12                  | 278                 |         | 32306              |
| 48TR8X768    | 9830                   | 768           | 8                   | 230                 | 411 1/2 | 26267              |
| 48TR10X768   | 12288                  |               | 10                  | 254                 |         | 30380              |
| 48TR12X768   | 14746                  |               | 12                  | 278                 |         | 33035              |
| 49TR8X784    | 10035                  | 784           | 8                   | 230                 | 420     | 26733              |
| 49TR10X784   | 12544                  |               | 10                  | 254                 |         | 30902              |
| 49TR12X784   | 15053                  |               | 12                  | 278                 |         | 33595              |
| 50TR8X800    | 10240                  | 800           | 8                   | 230                 | 428 1/2 | 27199              |
| 50TR10X800   | 12800                  |               | 10                  | 254                 |         | 31424              |
| 50TR12X800   | 15360                  |               | 12                  | 278                 |         | 34154              |
| 51TR8X816    | 10445                  | 816           | 8                   | 230                 | 437     | 27752              |
| 51TR10X816   | 13056                  |               | 10                  | 254                 |         | 32083              |
| 51TR12X816   | 15667                  |               | 12                  | 278                 |         | 34884              |
| 52TR8X832    | 10650                  | 832           | 8                   | 230                 | 445 1/2 | 28218              |
| 52TR10X832   | 13312                  |               | 10                  | 254                 |         | 32605              |
| 52TR12X832   | 15974                  |               | 12                  | 278                 |         | 35444              |
| 53TR8X848    | 10854                  | 848           | 8                   | 230                 | 454     | 28684              |
| 53TR10X848   | 13568                  |               | 10                  | 254                 |         | 33127              |
| 53TR12X848   | 16282                  |               | 12                  | 278                 |         | 36003              |
| 54TR8X864    | 11059                  | 864           | 8                   | 230                 | 462 1/2 | 29236              |
| 54TR10X864   | 13824                  |               | 10                  | 254                 |         | 33787              |
| 54TR12X864   | 16589                  |               | 12                  | 278                 |         | 36733              |
| 55TR8X880    | 11264                  | 880           | 8                   | 230                 | 471     | 29735              |
| 55TR10X880   | 14080                  |               | 10                  | 254                 |         | 34345              |
| 55TR12X880   | 16896                  |               | 12                  | 278                 |         | 37329              |
| 56TR8X896    | 11469                  | 896           | 8                   | 230                 | 479 1/2 | 30169              |
| 56TR10X896   | 14336                  |               | 10                  | 254                 |         | 34831              |
| 56TR12X896   | 17203                  |               | 12                  | 278                 |         | 37852              |
| 57TR8X912    | 11674                  | 912           | 8                   | 230                 | 488     | 30721              |
| 57TR10X912   | 14592                  |               | 10                  | 254                 |         | 35490              |
| 57TR12X912   | 17510                  |               | 12                  | 278                 |         | 38581              |
| 58TR8X928    | 11878                  | 928           | 8                   | 230                 | 496 1/2 | 31187              |
| 58TR10X928   | 14848                  |               | 10                  | 254                 |         | 36012              |
| 58TR12X928   | 17818                  |               | 12                  | 278                 |         | 39141              |
| 59TR8X944    | 12083                  | 944           | 8                   | 230                 | 505     | 31709              |
| 59TR10X944   | 15104                  |               | 10                  | 254                 |         | 36640              |
| 59TR12X944   | 18125                  |               | 12                  | 278                 |         | 39824              |
| 60TR8X960    | 12288                  | 960           | 8                   | 230                 | 513 1/2 | 32206              |
| 60TR10X960   | 15360                  |               | 10                  | 254                 |         | 37193              |
| 60TR12X960   | 18432                  |               | 12                  | 278                 |         | 40430              |



- STANDARD FEATURES**
1. ALL WELDED HEAVY-DUTY CONSTRUCTION
  2. PRESSURE/VACUUM RATING: +/-20"W.C.
  3. STANDARD MATERIALS OF CONSTRUCTION: CARBON STEEL, STAINLESS STEEL, ALUMINUM
  4. STANDARD ELECTRICALS: NEMA 4 TIMER AND SOLENOID ENCLOSURES
  5. PAINT IS STANDARD WHITE OR ENVIROGREEN INDUSTRIAL ENAMEL.

- OPTIONAL FEATURES**
1. STRUCTURAL SUPPORTS
  2. SERVICE PLATFORMS
  3. EXPLOSION VENTING
  4. EXPLOSION-PROOF ELECTRICALS
  5. HIGHER PRESSURE/VACUUM RATING
  6. BIN VENT STYLE
  7. WIDE BAG SPACING
  8. WALK-IN CLEAN AIR PLENUM



TOP REMOVAL BAG DUST COLLECTOR ( 752 TO 960 BAGS)



9732 PFLUMM, LENEXA, KS 66215      PHONE: 913-831-0740 • FAX: 913-831-9271

|   |                |                         |                |             |
|---|----------------|-------------------------|----------------|-------------|
| TITLE: TOP REMOVAL BAG DUST COLLECTORS<br>MODEL 47TR8X752 TO 60TR12X960 (752 TO 960 BAGS) |                |                         |                |             |
| DATE:<br>10/03/01   | DRN BY:<br>DES | DWG. NO.:<br>CAT-TBA3-3 | P.S.:<br>64-00 | REV.:<br>#1 |