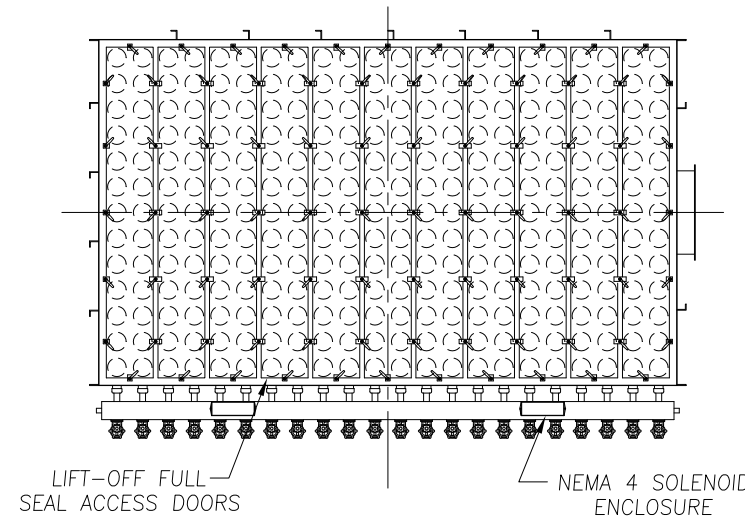


CAMCORP MODELS 17TR8X272 TO 31TR12X496

MODEL NUMBER	FILTER MEDIA (SQ. FT.)	QUAN. OF BAGS	BAG LENGTH (IN FT.)	DIMENSIONS (INCHES)		EST. INSTALLED WT.
				A	B	
17TR8X272	3482	272	8	230	148	10810
17TR10X272	4352		10	254		12621
17TR12X272	5222		12	278		13750
18TR8X288	3686	288	8	230	156 1/2	11303
18TR10X288	4608		10	254		13170
18TR12X288	5530		12	278		14353
19TR8X304	3891	304	8	230	165	11770
19TR10X304	4864		10	254		12853
19TR12X304	5837		12	278		13992
20TR8X320	4096	320	8	230	173 1/2	12286
20TR10X320	5120		10	254		14315
20TR12X320	6144		12	278		15589
21TR8X336	4301	336	8	230	182	12796
21TR10X336	5376		10	254		14881
21TR12X336	6451		12	278		16209
22TR8X352	4506	352	8	230	190 1/2	13266
22TR10X352	5632		10	254		15406
22TR12X352	6758		12	278		16772
23TR8X368	4710	368	8	230	199	13777
23TR10X368	5888		10	254		16023
23TR12X368	7066		12	278		17443
24TR8X384	4915	384	8	230	207 1/2	14273
24TR10X384	6144		10	254		16574
24TR12X384	7373		12	278		18048
25TR8X400	5120	400	8	230	216	14737
25TR10X400	6400		10	254		17095
25TR12X400	7680		12	278		18606
26TR8X416	5325	416	8	230	224 1/2	15261
26TR10X416	6656		10	254		17724
26TR12X416	7987		12	278		19290
27TR8X432	5530	432	8	230	233	15754
27TR10X432	6912		10	254		18273
27TR12X432	8294		12	278		19892
28TR8X448	5734	448	8	230	241 1/2	16272
28TR10X448	7168		10	254		18897
28TR12X448	8602		12	278		20571
29TR8X464	5939	464	8	230	250	16737
29TR10X464	7424		10	254		19417
29TR12X464	8909		12	278		21129
30TR8X480	6144	480	8	230	258 1/2	17230
30TR10X480	7680		10	254		19967
30TR12X480	9216		12	278		21731
31TR8X496	6349	496	8	230	267	17824
31TR10X496	7936		10	254		20683
31TR12X496	9523		12	278		22503

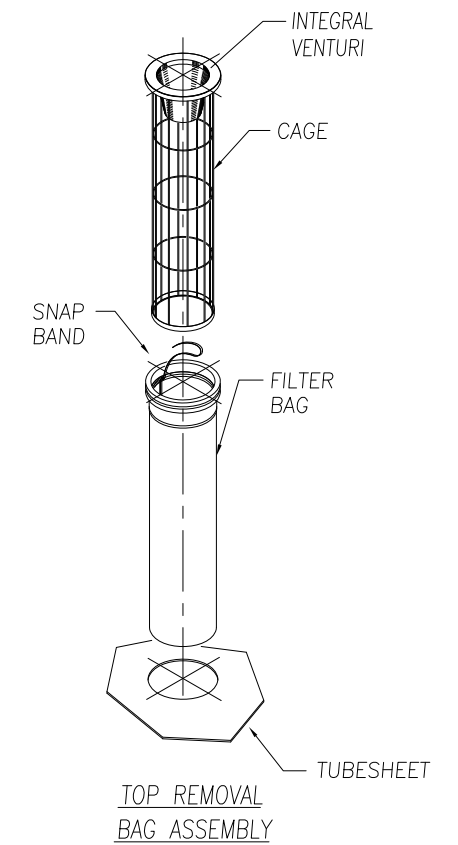
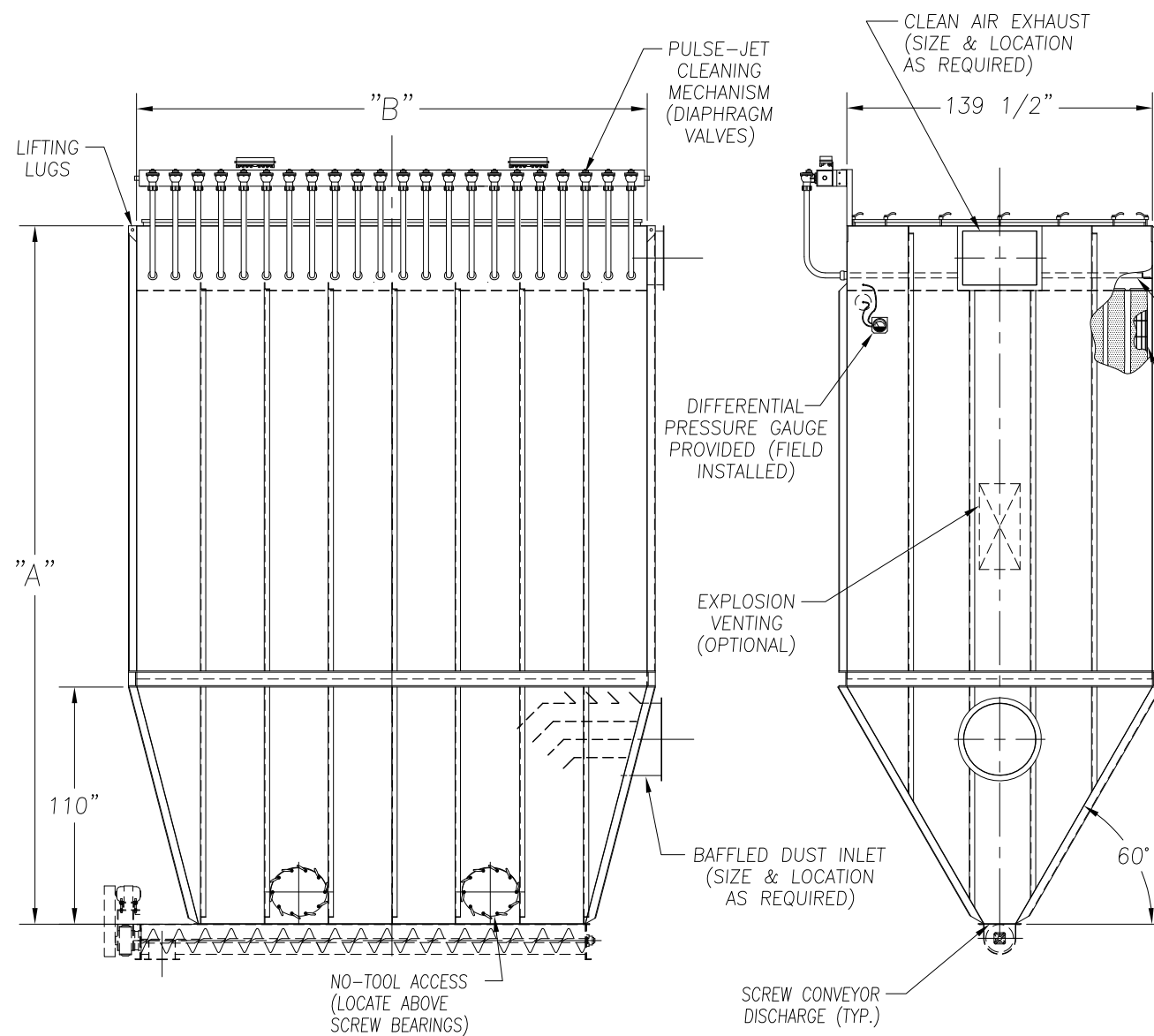


STANDARD FEATURES

1. ALL WELDED HEAVY-DUTY CONSTRUCTION
2. PRESSURE/VACUUM RATING: +/-20"W.C.
3. STANDARD MATERIALS OF CONSTRUCTION: CARBON STEEL, STAINLESS STEEL, ALUMINUM
4. STANDARD ELECTRICALS: NEMA 4 TIMER AND SOLENOID ENCLOSURES
5. PAINT IS STANDARD WHITE OR ENVIROGREEN INDUSTRIAL ENAMEL.

OPTIONAL FEATURES

1. STRUCTURAL SUPPORTS
2. SERVICE PLATFORMS
3. EXPLOSION VENTING
4. EXPLOSION-PROOF ELECTRICALS
5. HIGHER PRESSURE/VACUUM RATING
6. BIN VENT STYLE
7. WIDE BAG SPACING
8. WALK-IN CLEAN AIR PLENUM



TOP REMOVAL BAG DUST COLLECTOR (272 TO 496 BAGS)

REV. 1	10/02/01	ADDED SCREW CONVEYOR, CHG'D. TITLE
 9732 PFLUMM, LENEXA, KS 66215 PHONE: 913-831-0740 • FAX: 913-831-9271		
TITLE: TOP REMOVAL BAG DUST COLLECTORS MODEL 17TR8X272 TO 31TR12X496 (272 TO 496 BAGS)		
DATE: 08/17/99	DRN BY: DOTY	DWG. NO.: CAT-TBA3
P.S.: 64-00	REV.: #1	