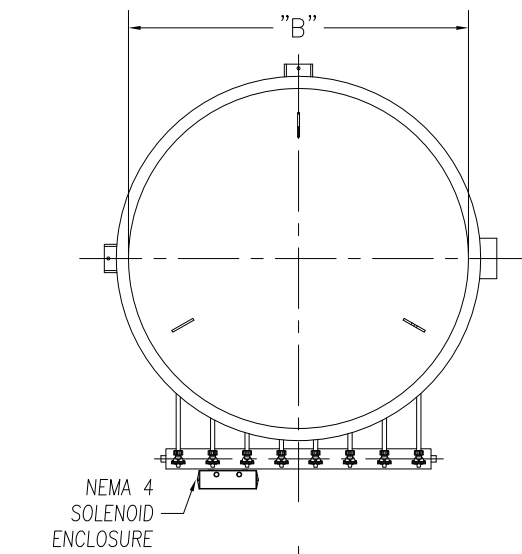


CAMCORP MODELS 45SFPWI37-35P TO 84SFPWI180-45P										
MODEL NUMBER	FILTER AREA (SQ. FT.)			QUAN. OF CARTS	CARTRIDGE LENGTH (INCHES)	DIMENSIONS (INCHES)				EST. INSTALLED WT.
	35 PLEATS	45 PLEATS	60 PLEATS			A	B	C	D	
45SFPWI37	680	873	1166	37	45	197 1/2	62	47	80	2703
60SFPWI37	953	1225	1632		60	212 1/2				2957
84SFPWI37	1361	1750	N/A		80	236 1/2				3312
45SFPWI44	809	1038	1386	44	45	203 1/4	68	52	80	3073
60SFPWI44	1133	1456	1940		60	218 1/4				3355
84SFPWI44	1618	2081	N/A		80	242 1/4				3747
45SFPWI52	956	1227	1638	52	45	209	73	57	80	3999
60SFPWI52	1339	1721	2293		60	224				4377
84SFPWI52	1913	2460	N/A		80	248				4917
45SFPWI61	1122	1440	1922	61	45	215	79	62	80	4505
60SFPWI61	1571	2019	2690		60	230				4919
84SFPWI61	2244	2885	N/A		80	254				5507
45SFPWI70	1287	1652	2205	70	45	222 3/4	87	69	80	5335
60SFPWI70	1803	2317	3087		60	237 3/4				5827
84SFPWI70	2575	3311	N/A		80	260 3/4				6511
45SFPWI80	1471	1888	2520	80	45	226 1/4	90	72	80	5867
60SFPWI80	2060	2648	3528		60	241 1/4				6384
84SFPWI80	2942	3784	N/A		80	265 1/4				7099
45SFPWI91	1673	2148	2867	91	45	242	96	77	80	6735
60SFPWI91	2343	3012	4013		60	257				7291
84SFPWI91	3347	4304	N/A		80	281				8059
45SFPWI102	1876	2407	3213	102	45	250	104	84	80	7576
60SFPWI102	2627	3376	4498		60	265				8181
84SFPWI102	3752	4825	N/A		80	289				9016
45SFPWI114	2096	2690	3591	114	45	257 5/8	108	87	80	8206
60SFPWI114	2936	3773	5027		60	273 5/8				8843
84SFPWI114	4193	5392	N/A		84	296 5/8				9718
45SFPWI127	2336	2997	4001	127	45	262 3/8	113	91	80	9034
60SFPWI127	3270	4204	5601		60	277 3/8				9708
84SFPWI127	4671	6007	N/A		84	301 3/8				10630
45SFPWI140	2575	3304	4410	140	45	270 3/8	121	98	80	10043
60SFPWI140	3605	4635	6174		60	285 3/8				10767
84SFPWI140	5149	6622	N/A		84	309 3/8				11759
45SFPWI154	2832	3634	4851	154	45	273 3/4	124	101	80	10528
60SFPWI154	3966	5097	6791		60	288 3/4				11281
84SFPWI154	5664	7284	N/A		84	312 3/4				12307
45SFPWI169	3108	3988	5324	169	45	279 1/2	130	106	80	11340
60SFPWI169	4352	5594	7453		60	294 1/2				12137
84SFPWI169	6216	7994	N/A		80	318 1/2				13220
45SFPWI180	3310	4248	5670	180	45	281 7/8	132	108	80	11717
60SFPWI180	4635	5958	7938		60	296 7/8				12534
84SFPWI180	6620	8514	N/A		80	320 7/8				13643

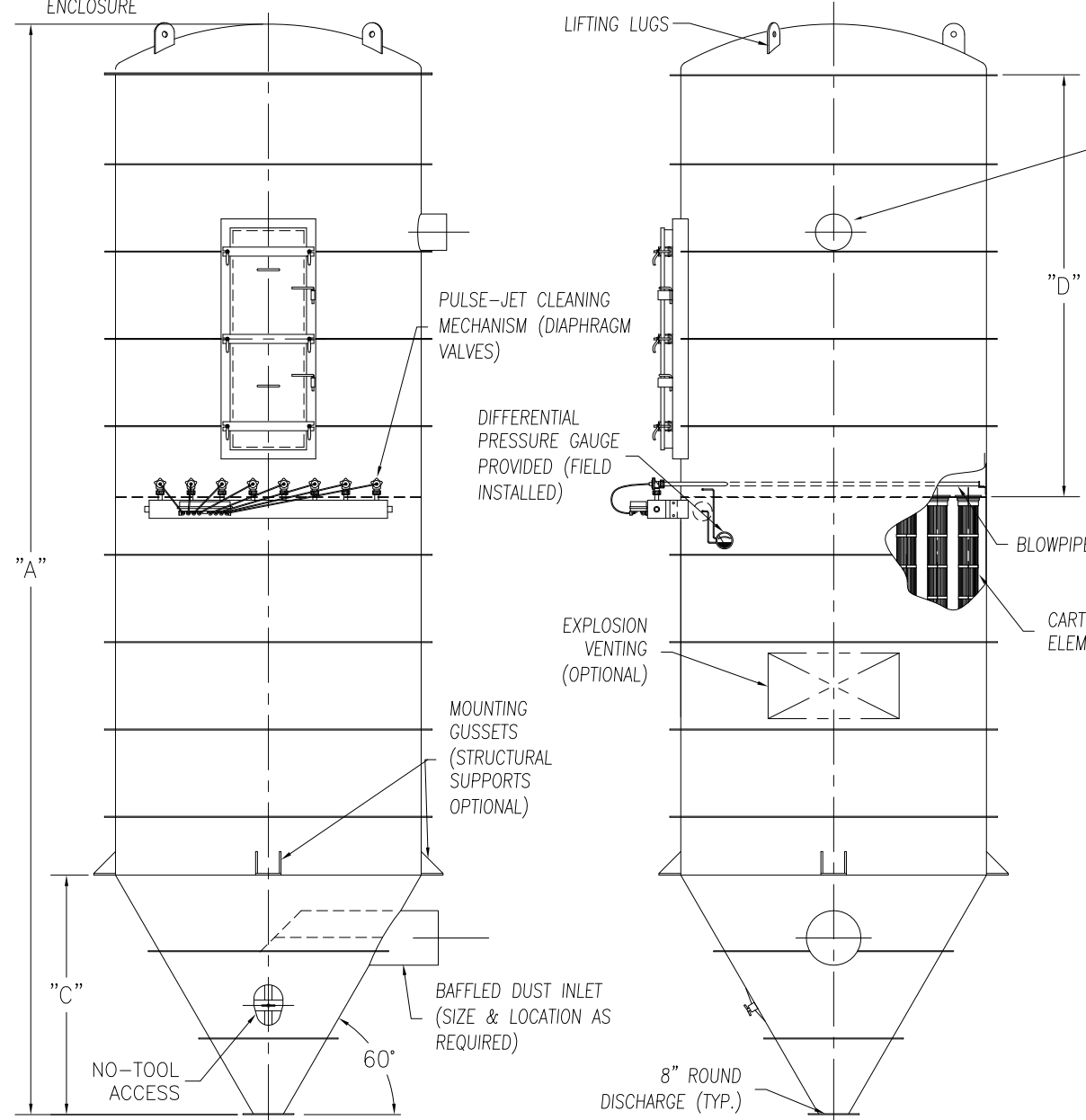
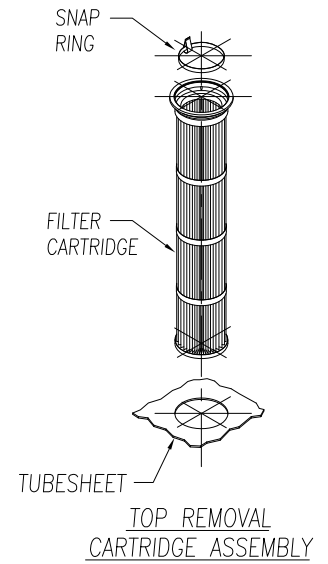


**STANDARD FEATURES**

1. ALL WELDED HEAVY-DUTY CONSTRUCTION
2. PRESSURE/VACUUM RATING: +/-20"W.C.
3. STANDARD MATERIALS OF CONSTRUCTION: CARBON STEEL, STAINLESS STEEL, ALUMINUM
4. STANDARD ELECTRICALS: NEMA 4 TIMER AND SOLENOID ENCLOSURES
5. PAINT: STANDARD IS WHITE OR ENVIROGREEN INDUSTRIAL ENAMEL

**OPTIONAL FEATURES**

1. STRUCTURAL SUPPORTS
2. SERVICE PLATFORMS
3. EXPLOSION VENTING
4. EXPLOSION-PROOF ELECTRICALS
5. HIGHER PRESSURE/VACUUM RATING
6. WIDE CARTRIDGE SPACING



WALK-IN CARTRIDGE REMOVAL PNEUMATIC RECEIVER ( 37 TO 180 CARTRIDGES )

**CAMCORP**  
 9732 PFLUMM, LENEXA, KS. 66215      PHONE: 913-831-0740      FAX: 913-831-9271

TITLE: WALK-IN CARTRIDGE REMOVAL PNEUMATIC RECEIVER  
 MODELS 45SFPWI37 TO 84SFPWI180 (37-180 CARTRIDGES)

DATE: 11/01/01	DRN BY: DOTY	DWG. NO.: CAT-SFPWI-1	P.S.: 48-00	REV.:
----------------	--------------	-----------------------	-------------	-------