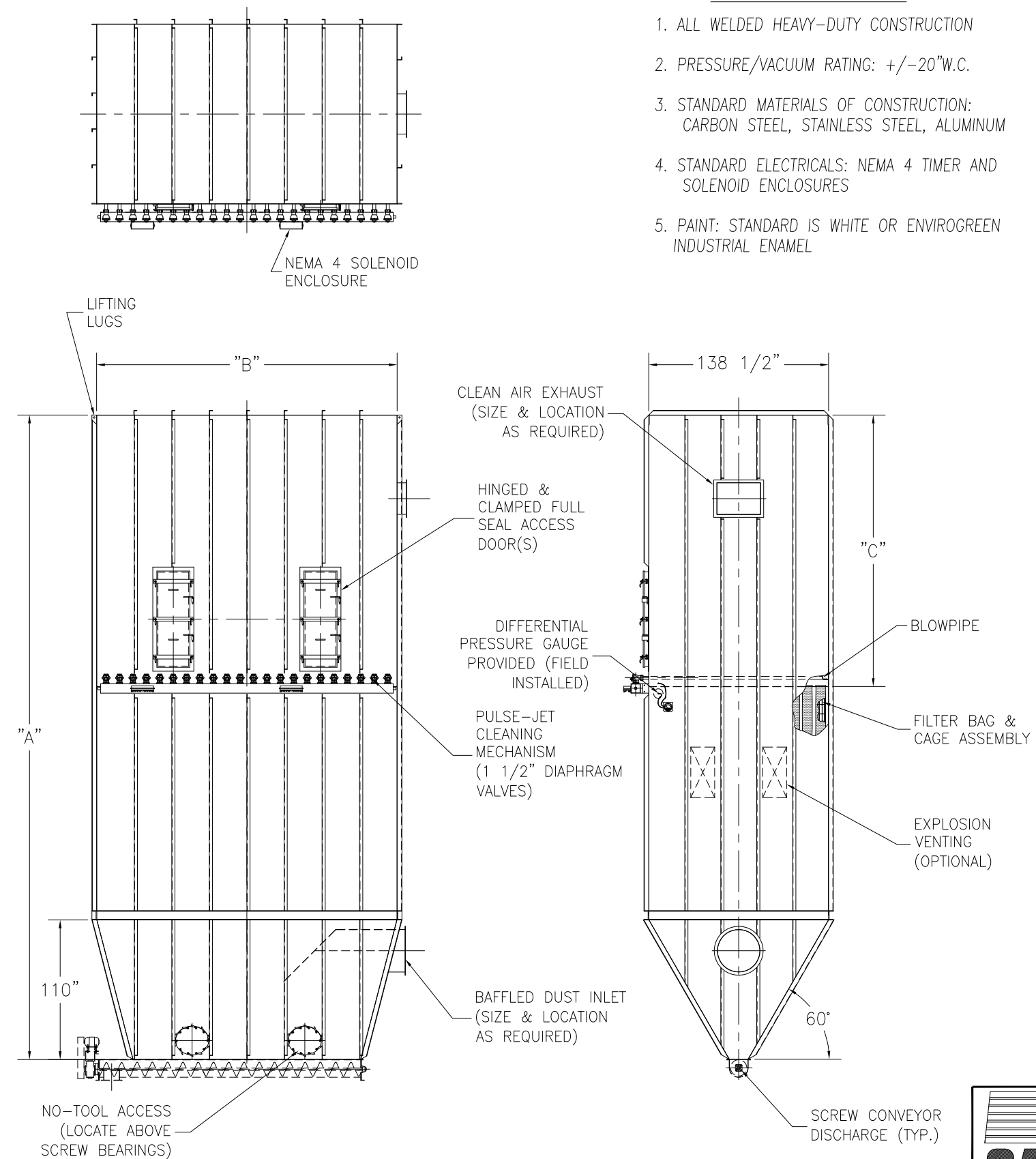


CAMCORP MODELS 17W18X272 TO 31W12X496

MODEL NUMBER	FILTER MEDIA (SQ. FT.)	QUAN. OF BAGS	BAG LENGTH (IN FT.)	DIMENSIONS (INCHES)			EST. INSTALLED WT.
				A	B	C	
17W18X272	3482	272	8	336	147	102	13970
17W10X272	4352		10	384		126	16336
17W12X272	5222		12	432		150	18024
18W18X288	3686	288	8	336	155 1/2	102	14553
18W10X288	4608		10	384		126	16988
18W12X288	5530		12	432		150	18743
19W18X304	3891	304	8	336	164	102	15223
19W10X304	4864		10	384		126	17742
19W12X304	5837		12	432		150	19563
20W18X320	4096	320	8	336	172 1/2	102	15833
20W10X320	5120		10	384		126	18471
20W12X320	6144		12	432		150	20860
21W18X336	4301	336	8	336	181	102	16432
21W10X336	5376		10	384		126	19138
21W12X336	6451		12	432		150	21092
22W18X352	4506	352	8	336	189 1/2	102	17108
22W10X352	5632		10	384		126	19898
22W12X352	6758		12	432		150	22597
23W18X368	4710	368	8	336	198	102	17713
23W10X368	5888		10	384		126	20622
23W12X368	7066		12	432		150	20710
24W18X384	4915	384	8	336	206 1/2	102	18297
24W10X384	6144		10	384		126	21275
24W12X384	7373		12	432		150	23429
25W18X400	5120	400	8	336	215	102	18963
25W10X400	6400		10	384		126	22034
25W12X400	7680		12	432		150	24250
26W18X416	5325	416	8	336	223 1/2	102	19581
26W10X416	6656		10	384		126	22763
26W12X416	7987		12	432		150	25050
27W18X432	5530	432	8	336	232	102	20156
27W10X432	6912		10	384		126	23417
27W12X432	8294		12	432		150	25768
28W18X448	5734	448	8	336	240 1/2	102	20893
28W10X448	7168		10	384		126	24279
28W12X448	8602		12	432		150	26714
29W18X464	5939	464	8	336	249	102	21447
29W10X464	7424		10	384		126	24538
29W12X464	8909		12	432		150	27386
30W18X480	6144	480	8	336	257 1/2	102	22148
30W10X480	7680		10	384		126	25687
30W12X480	9216		12	432		150	28254
31W18X496	6349	496	8	336	266	102	22704
31W10X496	7936		10	384		126	26362
31W12X496	9523		12	432		150	28996

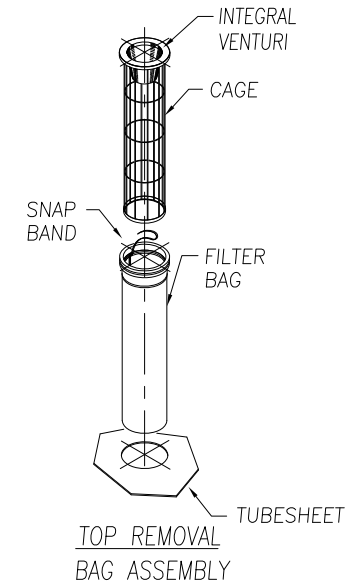


STANDARD FEATURES

1. ALL WELDED HEAVY-DUTY CONSTRUCTION
2. PRESSURE/VACUUM RATING: +/-20"W.C.
3. STANDARD MATERIALS OF CONSTRUCTION: CARBON STEEL, STAINLESS STEEL, ALUMINUM
4. STANDARD ELECTRICALS: NEMA 4 TIMER AND SOLENOID ENCLOSURES
5. PAINT: STANDARD IS WHITE OR ENVIROGREEN INDUSTRIAL ENAMEL

OPTIONAL FEATURES

1. STRUCTURAL SUPPORTS
2. SERVICE PLATFORMS
3. EXPLOSION VENTING
4. EXPLOSION-PROOF ELECTRICALS
5. HIGHER PRESSURE/VACUUM RATING



WALK-IN REMOVAL BAG
DUST COLLECTOR
(272 TO 496 BAGS)

9732 PFLUMM, LENEXA, KS. 66215 PHONE: 913-831-0740 FAX: 913-831-9271

TITLE: WALK-IN BAG REMOVAL DUST COLLECTORS
MODEL 17W18X272 TO 21W12X496 (272 TO 496 BAGS)

DATE: 10/30/01	DRN BY: DOTY	DWG. NO.: CAT-RWIOP-1	P.S.: 84-00	REV.:
-------------------	-----------------	--------------------------	----------------	-------