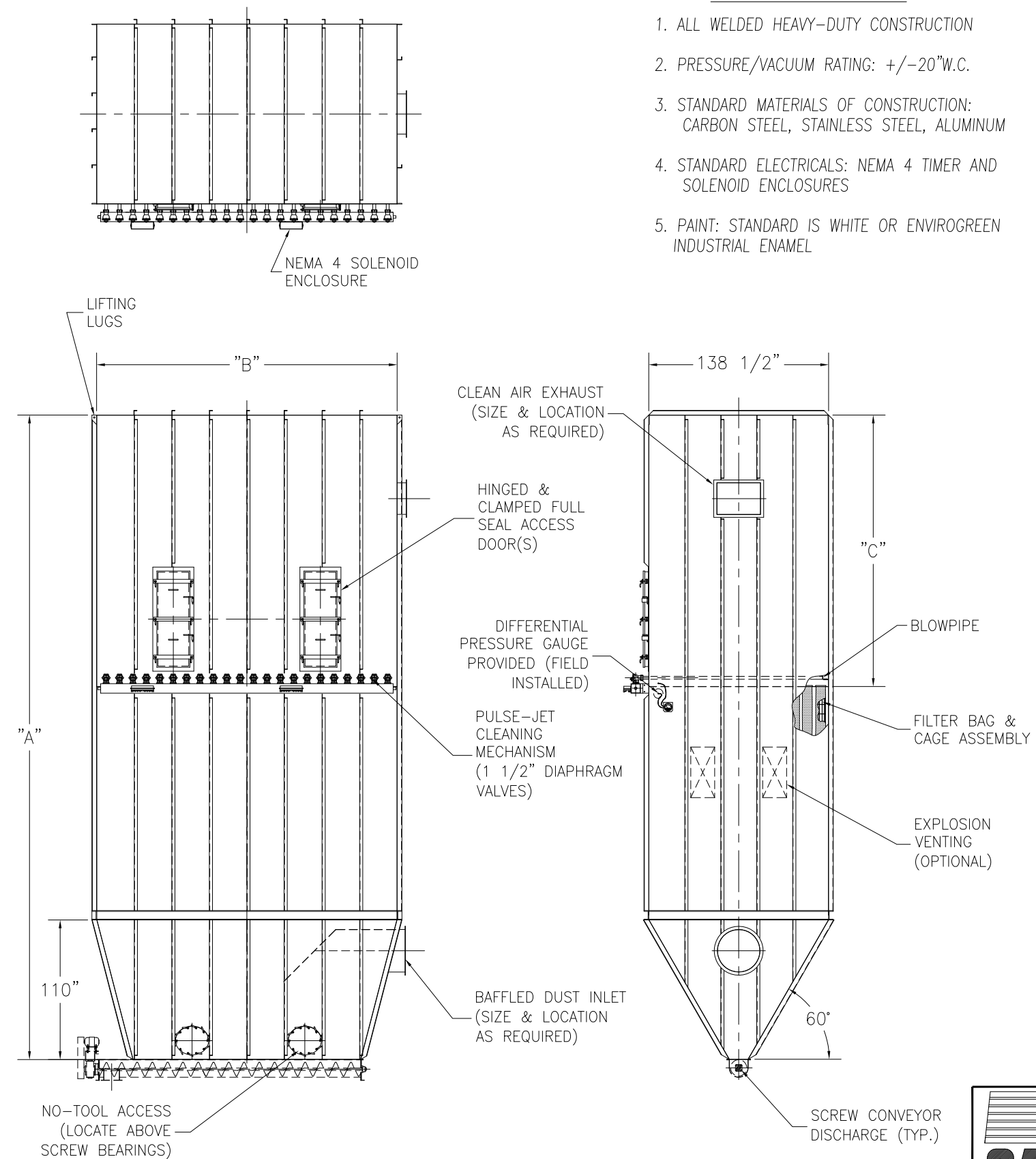


CAMCORP MODELS 32WI8X5128X272 TO 46WI12X736

MODEL NUMBER	FILTER MEDIA (SQ. FT.)	QUAN. OF BAGS	BAG LENGTH (IN FT.)	DIMENSIONS (INCHES)			EST. INSTALLED WT.
				A	B	C	
32WI8X512	6554	512	8	336	275 1/2	102	22968
32WI10X512	8192		10	384		126	26996
32WI12X512	9830		12	432		150	29681
33WI8X528	6758	528	8	336	284	102	23971
33WI10X528	8448		10	384		126	27782
33WI12X528	10138		12	432		150	30550
34WI8X544	6963	544	8	336	292 1/2	102	24579
34WI10X544	8704		10	384		126	28511
34WI12X544	10445		12	432		150	31345
35WI8X560	7168	560	8	336	301	102	25134
35WI10X560	8960		10	384		126	29133
35WI12X560	10752		12	432		150	32018
36WI8X576	7373	576	8	336	309 1/2	102	25835
36WI10X576	9216		10	384		126	29918
36WI12X576	11059		12	432		150	32885
37WI8X592	7578	592	8	336	318	102	26444
37WI10X592	9472		10	384		126	30646
37WI12X592	11366		12	432		150	33681
38WI8X608	7782	608	8	336	326 1/2	102	26998
38WI10X608	9728		10	384		126	31269
38WI12X608	11674		12	432		150	34353
39WI8X624	7987	624	8	336	335	102	27700
39WI10X624	9984		10	384		126	32056
39WI12X624	11981		12	432		150	35222
40WI8X640	8192	640	8	336	343 1/2	102	28308
40WI10X640	10240		10	384		126	32783
40WI12X640	12288		12	432		150	36017
41WI8X656	8397	656	8	336	351	102	28805
41WI10X656	10496		10	384		126	33336
41WI12X656	12595		12	432		150	36606
42WI8X672	8602	672	8	336	360 1/2	102	29565
42WI10X672	10752		10	384		126	34191
42WI12X672	12902		12	432		150	37557
43WI8X688	8806	688	8	336	369	102	30173
43WI10X688	11008		10	384		126	34921
43WI12X688	13210		12	432		150	38383
44WI8X704	9011	704	8	336	377 1/2	102	30727
44WI10X704	11264		10	384		126	36042
44WI12X704	13517		12	432		150	39023
45WI8X720	9216	720	8	336	386	102	31484
45WI10X720	11520		10	384		126	36434
45WI12X720	13824		12	432		150	40016
46WI8X736	9421	736	8	336	394 1/2	102	32038
46WI10X736	11776		10	384		126	37058
46WI12X736	14131		12	432		150	40688



WALK-IN REMOVAL BAG DUST COLLECTOR (512 TO 736 BAGS)

9732 PFLUMM, LENEXA, KS. 66215 PHONE: 913-831-0740 FAX: 913-831-9271

TITLE: WALK-IN BAG REMOVAL DUST COLLECTORS
MODEL 32WI8X512 TO 46WI12X736 (512 TO 736 BAGS)

DATE: 10/30/01	DRN BY: DOTY	DWG. NO.: CAT-RWIOP-2	P.S.: 84-00	REV.:
----------------	--------------	-----------------------	-------------	-------