

CAMCORP MODELS 36X12E TO 96X96E

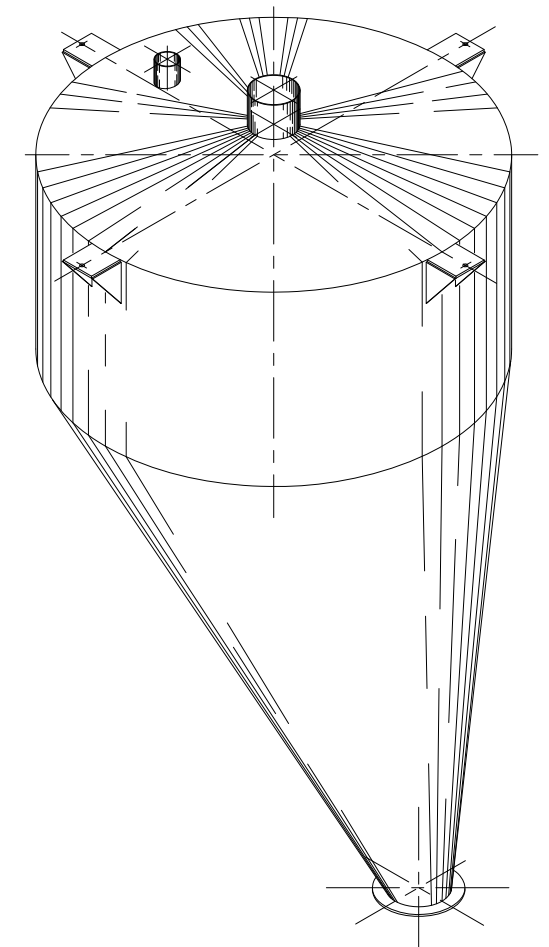
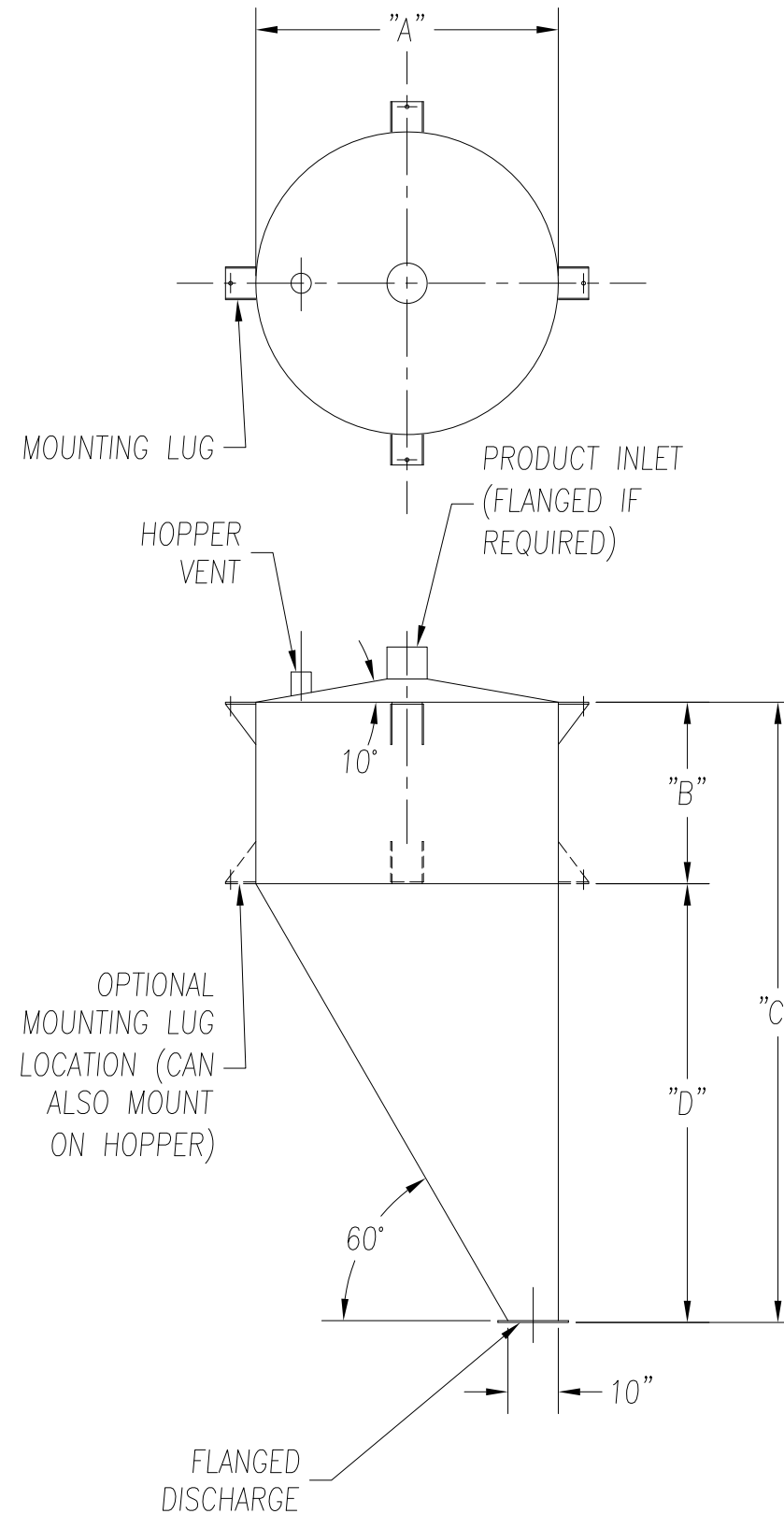
MODEL NUMBER	BIN CAPACITY (CUBIC FEET-LEVEL FULL)	USEABLE CAPACITY (CUBIC FEET @ 25° ANGLE OF REPOSE)	ADDITIONAL CAPACITY (PER FOOT)	DIMENSIONS (INCHES)				MATERIAL THICKNESS	EST. INSTALLED WT. (EMPTY)
				A (DIA.)	B	C	D		
36X12E	19	17	7	36	12	59 5/16	45 1/16	12 GA.	205
36X24E	26	24			24	71 5/16			251
36X36E	33	31			36	83 5/16			296
36X48E	40	38			48	95 5/16			341
36X60E	47	45			60	107 5/16			387
48X12E	41	37	12.5	48	12	81 3/16	65 13/16	12 GA.	343
48X24E	53	49			24	93 3/16			403
48X36E	66	62			36	105 3/16			464
48X48E	78	74			48	117 3/16			524
48X60E	91	86			60	129 3/16			585
60X24E	95	87	19.5	60	24	115	86 5/8	12 GA.	591
60X36E	114	106			36	127			667
60X48E	134	126			48	139			742
60X60E	153	145			60	151			817
72X24E	153	140	28	72	24	136 7/8	107 3/8	12 GA.	813
72X36E	181	168			36	148 7/8			904
72X48E	209	196			48	160 7/8			995
72X60E	237	224			60	172 7/8			1085
84X36E	269	248	38	84	36	170 11/16	128 3/16	12 GA.	1508
84X48E	307	287			48	182 11/16			1644
84X60E	346	325			60	194 11/16			1780
84X72E	384	363			72	206 11/16			1916
96X48E	431	400	50	96	48	204 9/16	149	10 GA.	2074
96X60E	481	450			60	216 9/16			2229
96X72E	531	500			72	228 9/16			2385
96X84E	581	550			84	240 9/16			2540
96X96E	631	600			96	252 9/16			2696

STANDARD FEATURES

1. ALL WELDED HEAVY-DUTY CONSTRUCTION
2. INLET & OUTLET SIZED AS REQUIRED.
3. STANDARD MATERIALS OF CONSTRUCTION: CARBON STEEL, STAINLESS STEEL, ALUMINUM
4. PAINT: STANDARD IS WHITE OR ENVIROGREEN INDUSTRIAL ENAMEL

OPTIONAL FEATURES

1. STRUCTURAL SUPPORTS
2. LEVEL INDICATORS
3. FLANGED TOP
4. MANWAY ACCESS
5. VIBRATOR AND/OR AIR PADS
6. FOOD GRADE FINISHES AND COATINGS



ECCENTRIC SCALE HOPPERS, BINS, AND SURGE HOPPERS



9732 PFLUMM, LENEXA, KS 66215

PHONE: 913-831-0740 • FAX: 913-831-9271

TITLE:		SCALE HOPPER ECCENTRIC MODELS 36X12E TO 96X96E		
DATE:	DRN BY:	DWG. NO.:	P.S.:	REV.:
11/08/01	DOTY	CAT-SHE	36-00	