

# PLEATED FILTER ELEMENTS

## Top Load Style - 6-1/4", 45 pleats

### Specification

- Top load style pleated filter element (PFE)
- Metal top style rated for higher temperatures up to 375°F (190°C)
- Fits most industry standard 6-1/4" (15.88 cm) diameter tubesheet holes, fits tubesheet thickness from 1/8" to 1/4" (3.18 mm to 6.35 mm)
- Replaces 6-1/4" (15.88 cm) diameter bag and cage assembly

### Standard Configuration

- 3.6" (91 mm) inner core diameter
- 1.0" (25 mm) nominal pleat depth
- Standard pleat count - 45 pleats
- Galvanized metal top and bottom pan components with high temperature potting compound, rated to 325°F (190°C)
- Polyurethane, polypropylene and polyester components are safe for food contact

### Options

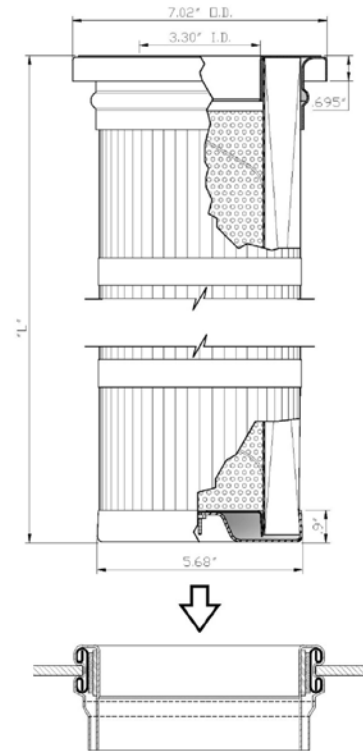
- Special pleat counts (available range: 35-45 pleats)
- Galvanized and SS perforated metal (spiral formed)
- Grounded designs (with conductive media, metal core and stainless steel ground wire straps sewn into snapband cuff)

### Filter Media

- Base filter media: 100% self-supported pleatable aramid needle felt, singed both sides, treated with stiffening resin for pleating
- Filtration efficiency: >98% for particle size >3.0μ @ AMR (air-to-media-ratio) of 3.0 ft<sup>3</sup>/min/ft<sup>2</sup> - MERV 10 (per ASHRAE 52.2)
- Weight: 10.0 oz/yd<sup>2</sup> (338 g/m<sup>2</sup>)
- Permeability: 20-45 acfm Frazier permeability at 0.5" (12.7 mm) w.g. dP

MEDIA DESIGNATION	MEDIA DESCRIPTION
FM0301	10.0 oz./yd <sup>2</sup> stiffened aramid needle felt
FM0401	10.0 oz./yd <sup>2</sup> stiffened aramid needle felt laminated with ePTFE membrane

NOMINAL LENGTH	OVERALL LENGTH "L"	FILTER AREA (sf) @ 45 pleats	NO. OF STRAPS
1.64' (0.5 m)	20.0" (50.8 cm)	12.3	2
3.28' (1.0 m)	40.0" (1.0 m)	24.6	4
6.56' (2.0 m)	79.0" (2.0 m)	49.2	7



- Mullenburst strength: 300 psi

**CAMCORP**

A MEMBER OF THE SCHEUCH GROUP

ALL STATED SPECIFICATIONS ARE SUBJECT TO CHANGE WITHOUT NOTICE OR OBLIGATION. VISIT CAMCORPINC.COM FOR THE LATEST INFORMATION.

pleatedelements rev. 12/18 ©CAMCORP, INC.

# PLEATED FILTER ELEMENTS

## Top Load Style - 6-1/4", 54 pleats

### Specification

- Top load style pleated filter element (PFE)\*
- Unique, aerodynamically designed high-flow orifice develops 30% more cleaning energy\*\*
- Fits most industry standard 6-1/4" (15.88 cm) diameter tubesheet holes, fits tubesheet thickness from 1/8" to 1/4" (3.18 mm to 6.35 mm)
- Replaces 6-1/4" (15.88 cm) diameter bag and cage assembly

### Standard Configuration

- 3.6" (91 mm) inner core diameter
- 1.0" (25 mm) nominal pleat depth
- Standard pleat count - 54 pleats
- Molded top boot and bottom puck made from bright white soft polyurethane rated to 225°F (107°C)
- iSeal™ gasket made from flexible gray EPDM rubber
- Polyurethane, EPDM rubber, polypropylene and polyester components are safe for food contact

### Options

- Special pleat counts (available range: 35-60 pleats)
- Polypropylene Core rated to 180°F (82°C)
- Galvanized and SS perforated metal (spiral formed) for temperatures > 180°F (82°C) and for high pressure/vacuum applications
- Grounded designs (with conductive media, metal core and electrically conductive EPDM tubesheet gasket (iSeal gasket))

### Filter Media

- Base filter media: 100% spunbond polyester (SBPE)
- Filtration efficiency: > 99.9% for particle size range between

>0.2 µ-2.0 µ - BGIA Dust Class "M" rating

- Weight: 8.0 oz/yd<sup>2</sup> (260 g/m<sup>2</sup>)
- Permeability: 15-30 acfm Frazier permeability at 0.5" (12.7 mm) w.g. dP
- Mullenburst strength: 300 psi

MEDIA DESIGNATION	MEDIA DESCRIPTION
FM0103	100% spunbond polyester (SBPE)
FM0105	100% SBPE with hydrophobic & oliophobic finish
FM0109	100% SBPE with conductive grid
FM0203	100% SBPE with ePTFE membrane
FM0209	100% SBPE with conductive grid & ePTFE membrane

\*U.S. Patent No. D 626,208 & Patent Pending

\*\*Confirmed by Independent 3rd party testing

# CAMCORP

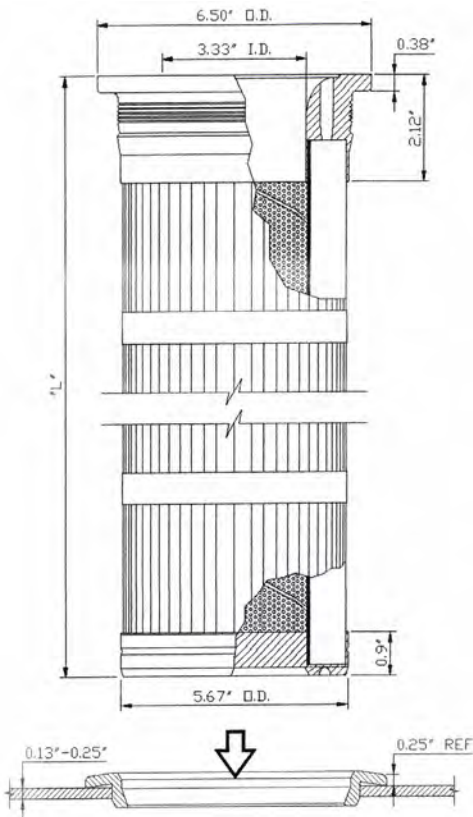
A MEMBER OF THE SCHEUCH GROUP

ALL STATED SPECIFICATIONS ARE SUBJECT TO CHANGE WITHOUT NOTICE OR OBLIGATION. VISIT CAMCORPINC.COM FOR THE LATEST INFORMATION.

pleatedelements rev. 12/18 ©CAMCORP, INC.

# PLEATED FILTER ELEMENTS

Diagrams - Top Load Style - 6-1/4",  
54 pleats



NOMINAL LENGTH	OVERALL LENGTH "L"	FILTER AREA (sf) @ 54 pleats	NO. OF STRAPS
1.64' (0.5 m)	21.0" (53.34 cm)	14.8	1
3.28' (1.0 m)	40.7" (1.0 m)	29.6	3
4.59' (1.4 m)	56.4" (1.4 m)	41.3	4
6.56' (2.0 m)	80.0" (2.0 m)	59.1	6

# PLEATED FILTER ELEMENTS

## Top Load Style - 8-3/4", 85 pleats

### Specification

- Top load style pleated filter element (PFE)\*
- Unique, aerodynamically designed high-flow orifice develops 30% more cleaning energy\*\*
- Fits most industry standard 8-3/4" (22.23 cm) diameter tubesheet holes, fits tubesheet thickness from 1/8" to 1/4" (3.18 mm to 6.35 mm)

### Standard Configuration

- 5.0" (126 mm) inner core diameter
- 1.42" (36 mm) nominal pleat depth
- Standard pleat count - 85 pleats
- Molded top boot and bottom puck made from bright white soft polyurethane rated to 225°F (107°C)
- iSeal™ gasket made from flexible gray EPDM rubber
- Polyurethane, EPDM rubber, polypropylene and polyester components are safe for food contact

### Options

- Special pleat counts (available range: 60-90 pleats)
- Galvanized and SS perforated metal (spiral formed)
- Grounded designs (with conductive media, metal core and electrically conductive EPDM tubesheet gasket (iSeal gasket))

### Filter Media

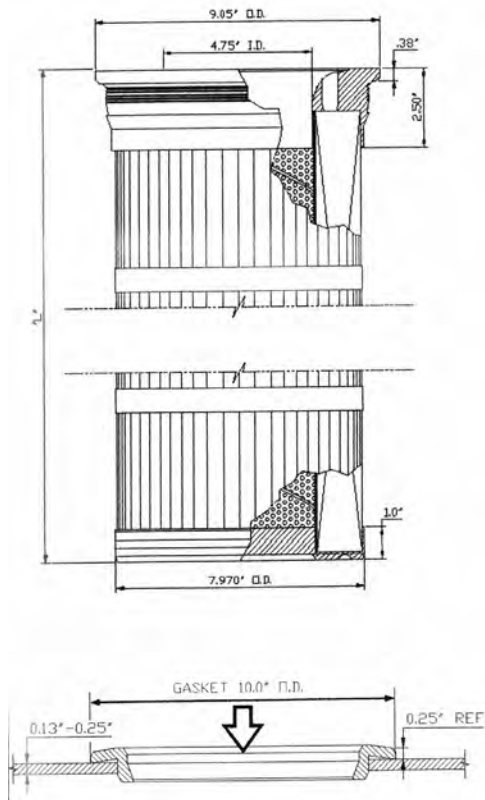
- Base filter media: 100% spunbond polyester (SBPE)
- Filtration efficiency: > 99.9% for particle size range between >0.2 μ-2.0 μ - BGIA Dust Class "M" rating
- Weight: 8.0 oz/yd<sup>2</sup> (260 g/m<sup>2</sup>)
- Permeability: 15-30 acfm Frazier permeability at 0.5" (12.7 mm) w.g. dP
- Mullenburst strength: 300 psi

MEDIA DESIGNATION	MEDIA DESCRIPTION
FM0103	100% spunbond polyester (SBPE)
FM0105	100% SBPE with hydrophobic & oliophobic finish
FM0109	100% SBPE with conductive grid
FM0203	100% SBPE with ePTFE membrane
FM0209	100% SBPE with conductive grid & ePTFE membrane

\*U.S. Patent No. D 626,208 & Patent Pending  
 \*\*Confirmed by Independent 3rd party testing

# PLEATED FILTER ELEMENTS

Diagrams - Top Load Style -  
8-3/4", 85 pleats



NOMINAL LENGTH	OVERALL LENGTH "L"	FILTER AREA (sf) @ 85 pleats	NO. OF STRAPS
1.64' (0.5 m)	21.2" (53.8 cm)	33.0	1
2.19' (0.67 m)	27.5" (69.9 cm)	43.6	2
3.28' (1.0 m)	40.8" (1.0 m)	66.0	3
4.59' (1.4 m)	56.6" (1.4 m)	92.4	4

## CAMCORP

A MEMBER OF THE SCHEUCH GROUP

ALL STATED SPECIFICATIONS ARE SUBJECT TO CHANGE WITHOUT NOTICE OR OBLIGATION. VISIT CAMCORPINC.COM FOR THE LATEST INFORMATION.

pleatedelements rev. 12/18 ©CAMCORP, INC.

# PLEATED FILTER ELEMENTS

## Top Load Style - 8-3/4", 100 pleats

### Specification

- Top or bottom load style pleated filter element (PFE) with 3-lug style hold-downs
- Fits most industry standard 8-3/4" (22.23 cm) diameter tubesheet holes, fits tubesheet thickness from 1/8" to 1/4" (3.18 mm to 6.35 mm)

### Standard Configuration

- 6.1" (156 mm) inner core diameter
- 1.18" (30 mm) nominal pleat depth
- Standard pleat count - 100 pleats
- Aluminum 3-lug style top cap and galvanized, closed, recessed bottom pan
- Potted with hard polyurethane potting compound
- Soft EPDM foam gasket (6 mm x 12 mm) can be placed on top of or under flange for bottom or top access installation
- Components rated for 225°F (107°C)

### Options

- Special pleat counts (available range: 50-100 pleats)
- Galvanized and SS perforated metal (spiral formed)
- Grounded designs (with conductive media, metal core and SS ground wires)

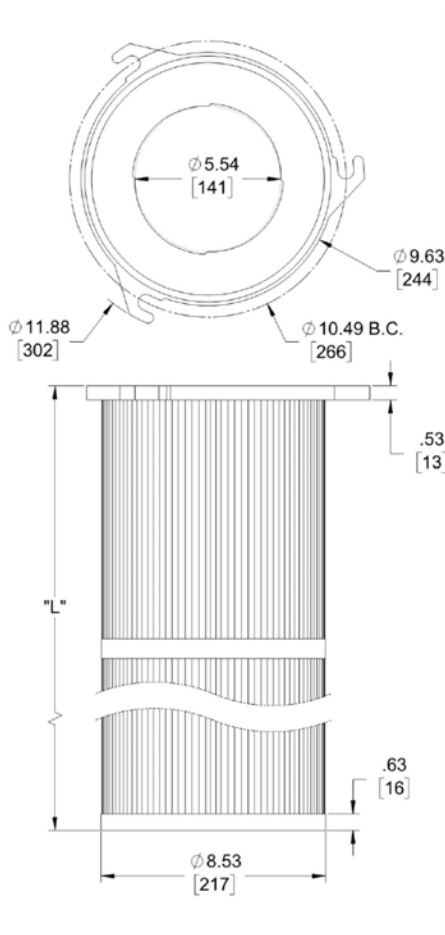
### Filter Media

- Base filter media: 100% spunbond polyester (SBPE)
- Filtration efficiency: > 99.9% for particle size range between >0.2 μ-2.0 μ - BGIA Dust Class "M" rating
- Weight: 8.0 oz/yd<sup>2</sup> (260 g/m<sup>2</sup>)
- Permeability: 15-30 acfm Frazier permeability at 0.5" (12.7 mm) w.g. dP
- Mullenburst strength: 300 psi

MEDIA DESIGNATION	MEDIA DESCRIPTION
FM0103	100% spunbond polyester (SBPE)
FM0105	100% SBPE with hydrophobic & oliophobic finish
FM0109	100% SBPE with conductive grid
FM0203	100% SBPE with ePTFE membrane
FM0209	100% SBPE with conductive grid & ePTFE membrane

# PLEATED FILTER ELEMENTS

Diagrams - Top Load Style -  
8-3/4", 100 pleats



NOMINAL LENGTH	OVERALL LENGTH "L"	FILTER AREA (sf) @100 pleats	NO. OF STRAPS
1.64' (0.5 m)	20.0" ( 50.8 cm)	32.3	1
2.19' (0.67 m)	26.5" (67.31 cm)	43.0	2
3.28' (1.0 m)	40.0" (1.0 m)	64.5	3
4.59' (1.4 m)	55.5" (1.4 m)	90.3	4