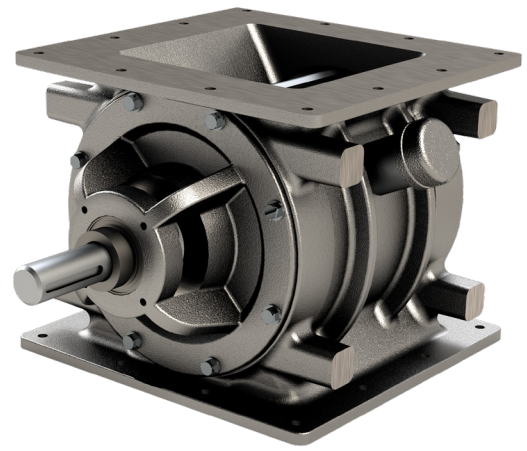


ROTARY AIRLOCKS

CI Series



Description

Rotary valve for metering, feeding, and airlock applications.

Specifications

Inlet/Outlet Flange Sizes: 10 sizes from 6" to 26"

Material of Construction: Cast Iron, Stainless Steel

Pressure Differential: Up to 20 PSIG

High Temperature Range: 750°F

Options

- 304, 304L, 316, 316L, or 2205 cast stainless steel valve housing
- No. 4 finish on internal product contact surfaces of housing, and all rotor surfaces. Interior coatings: hard chrome, tungsten, nickel, and epoxy
- Rotor types: closed-end, metering, shallow-pocket, adjustable-tip, and Teflon®-coated.
- Adjustable rotor tip types: EPDM rubber, polyurethane, mild steel, hardened steel, stainless steel, and bronze
- Shaft seal types: ACST-4™ glandless Teflon® shaft seal, and packing gland. Valve housing vent ports
- Shaft seal and rotor pocket air purge. 6-vane, 10-vane, or 12-vane rotor
- Custom drive packages
- Application-specific accessories: blow-through adapter, shear plate deflector, surge hopper, motion speed switch assembly.

FEATURES:

- Available in 10 heights, from 10" H to 44" H; and 10 square-flange sizes from 6" to 26"
- Valve housing cast in North America; ensures superior strength and solidification of housing's metallurgy
- CNC-machined components and housing provide precision tolerances; eliminates axial shaft movement, extends maintenance cycles
- Outboard bearing design protects bearings in high-temperature and high-PSIG applications; removes bearings from direct path of damaging contaminants
- Easily manages pressure differentials up to 15 PSIG; with super-duty series up to 22 PSIG
- Excellent performance in high-temperature applications up to 750°F
- Cast iron housing
- 8-vane rotor with beveled tips and sides



CAMCORP

A MEMBER OF THE SCHEUCH GROUP

ROTARY AIRLOCKS



CI Series

VALVE SIZE (IN.)	ROTARY VALVE CAPACITY (CUBIC FT./HR.)									
	6	12	18	24	30	36	42	48	54	60
6	6	30	48	60	72	84	96	108	120	132
8	12	60	96	120	144	168	192	216	240	264
10	24	120	192	240	288	336	384	432	480	528
12	45	225	360	450	540	630	720	810	900	990
14	66	330	528	660	792	924	1056	1188	1320	1452
16	84	420	672	840	1008	1176	1344	1512	1680	1848
18	162	810	1296	1620	1944	2268	2592	2916	3240	3564
22	276	1380	2208	2760	3312	3864	4416	4968	5520	6072
24	384	1920	3072	3840	4608	5376	6144	6912	7680	8448
26	540	2700	4320	5400	6480	7560	8640	9720	10800	11880
ROTOR SPEED RPM	1	5	8	10	12	14	16	18	20	22