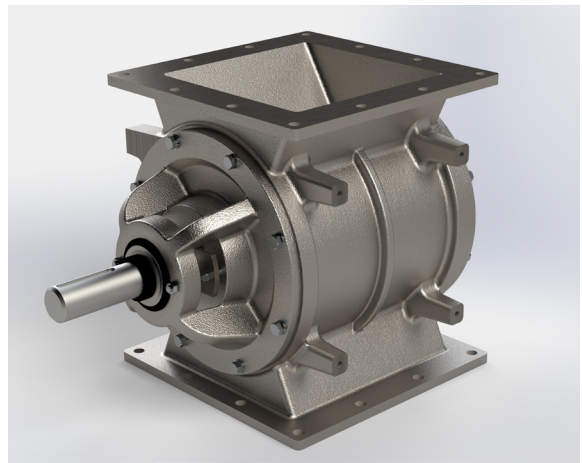


ROTARY AIRLOCKS

DR-S Series



Description

Rotary valve for metering, feeding, and airlock applications. The DR-S Series valves are built to application-specific requirements, including: custom rotor configurations, factory-applied internal coatings, and sanitary materials of construction.

Specifications

Inlet/Outlet Flange Sizes: 3 sizes from 7 5/8" to 11 1/4"

Material of Construction: Cast Iron, Stainless Steel

Pressure Differential: Up to 22 PSIG

High Temperature Range: 750°F

Options

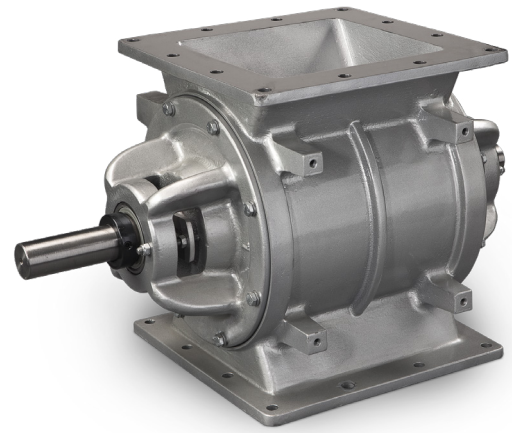
- RotorRail™ design enables tool-less access to the rotor and all internal surfaces of the housing without time-consuming disassembly or removal from service
- 304 or 316 cast stainless steel valve housing
- No. 4 finish on internal product contact surfaces of housing, and all rotor surfaces. Interior coating: hard chrome
- Rotor types: closed-end, shallow-pocket, and adjustable-tip
- Adjustable rotor tip types: EPDM rubber, polyurethane, hardened steel, and stainless steel
- Shaft seal types: ACST-4™ glandless Teflon® shaft seal, and packing gland



FEATURES:

- Pre-fit Performance™ housings provide all of the in-use advantages built into every ACS valve, plus the assurance of precise alignment and fast installation when replacing competitive valves
- Available in 3 heights, from 12"H to 18 1/4"H; and 3 flange sizes from 7 5/8"H to 11 1/4"H
- Valve housing cast in North America; ensures superior strength and solidification of housing's metallurgy
- CNC-machined components and housing provide precision tolerances; eliminates axial shaft movement, extends maintenance cycles
- Outboard bearing design protects bearings in high-temperature and high-PSIG applications; removes bearings from direct path of damaging contaminants
- Large shaft diameter eliminates rotor deflection; reduces rotor tip wear and bearing seal leakage
- Easily manages pressure differentials up to 15 PSIG; super-duty series up to 22 PSIG
- Excellent performance in high-temperature applications up to 750°F
- Cast iron housing
- 8-vane rotor with beveled tips and sides

ROTARY AIRLOCKS



DR-S Series

VALVE SIZE (IN.)	ROTARY VALVE CAPACITY (CUBIC FT./HR.)									
	12	60	96	120	144	168	192	216	240	264
8	12	60	96	120	144	168	192	216	240	264
10	24	120	192	240	288	336	384	432	480	528
12	45	225	360	450	540	630	720	810	900	990
ROTOR SPEED RPM	1	5	8	10	12	14	16	18	20	22

Optional Staggered Rotor Pocket

Advantages

- 16 offset pockets ensure a continuous and uniform flow rate to the conveying line
- More accurate rate of material flow

Options

- Available in mild steel or stainless steel
- Open end rotor or closed end shrouds