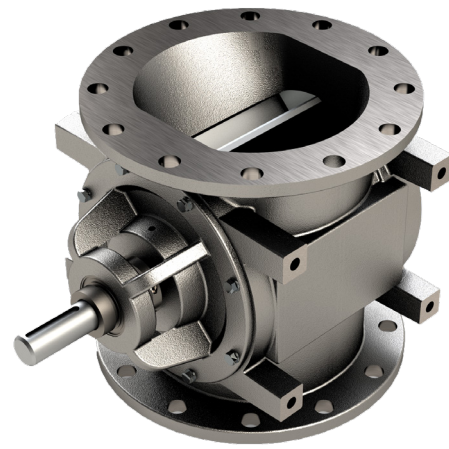


ROTARY AIRLOCKS



MD Series

Description

Rotary valve for metering, feeding, and airlock applications. For long-term savings, this valve will reduce total lifecycle maintenance requirements. The MD Series housings are cast in North America and CNC-machined to precise tolerances, eliminating axial shaft movement, seal leakage, and shortened bearing life.

Specifications

Inlet/Outlet Flange Sizes: 7 sizes from 4" to 16"

Material of Construction: Cast Iron, Stainless Steel

Pressure Differential: Up to 22 PSIG

High Temperature Range: 750°F

Options

- 304 or 316 cast stainless steel valve housing
- RotorRail™ feature provides tool-less access to rotor and internal surfaces; speeds cleaning and inspection; ensures fast, accurate rotor and endplate re-alignment
- No. 4 finish on internal product contact surfaces of housing, and all rotor surfaces
- Interior coatings: hard chrome, tungsten, nickel, and epoxy
- Rotor types: closed-end, metering, shallow-pocket, adjustable-tip, and Teflon®-coated
- Adjustable rotor tip types: EPDM rubber, polyurethane, hardened steel, stainless steel, and bronze
- Shaft seal types: ACST-4™ glandless Teflon® shaft seal, and packing gland. Valve housing vent ports
- Shaft seal and rotor pocket air purge. 6-vane, 10-vane, or 12-vane rotor

FEATURES:

- Available in 7 heights, from 7 3/8"H to 23 1/2"H; and 7 flange diameters from 4" to 16"
 - CNC-machined components and housing provide precision tolerances; eliminates axial shaft movement, extends maintenance cycles
 - Outboard bearing design protects bearings in high-temperature and high-PSIG applications; removes bearings from direct path of damaging contaminants
 - Easily manages pressure differentials up to 15 PSIG; with super-duty series up to 22 PSIG
 - Excellent performance in high-temperature applications up to 750°F
 - Cast iron housing
 - 8-vane rotor with beveled tips and sides
-
- Custom drive packages
 - Application-specific accessories: blow-through adapter, shear plate deflector, surge hopper, motion speed switch assembly.

ROTARY AIRLOCKS

MD Series

| VALVE SIZE (IN.) | ROTARY VALVE CAPACITY (CUBIC FT./HR.) | | | | | | | | | |
|------------------|---------------------------------------|-----|-----|-----|------|------|------|------|------|------|
| | 2 | 8 | 12 | 15 | 18 | 21 | 24 | 27 | 30 | 33 |
| 4 | 6 | 30 | 48 | 60 | 72 | 84 | 96 | 108 | 120 | 132 |
| 6 | 12 | 60 | 96 | 120 | 144 | 168 | 192 | 216 | 240 | 264 |
| 8 | 24 | 120 | 192 | 240 | 288 | 336 | 384 | 432 | 480 | 528 |
| 10 | 45 | 225 | 360 | 450 | 540 | 630 | 720 | 810 | 900 | 990 |
| 12 | 66 | 330 | 528 | 660 | 792 | 924 | 1056 | 1188 | 1320 | 1452 |
| 14 | 84 | 420 | 672 | 840 | 1008 | 1176 | 1344 | 1512 | 1680 | 1848 |
| 16 | 1 | 5 | 8 | 10 | 12 | 14 | 16 | 18 | 20 | 22 |
| ROTOR SPEED RPM | | | | | | | | | | |