

COUPLINGS



Clamp Sleeves

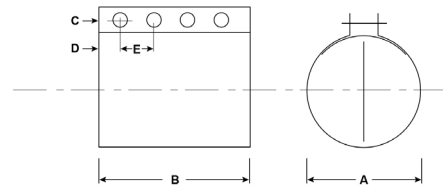
Application

Clamp sleeves are designed for low-pressure systems and designed to be used in message tube systems. Not suitable for pneumatic conveying.

Specifications

Standard clamp sleeves are manufactured from galvanized steel. For other materials contact the factory. All hardware is included and assembled in the coupling for customer convenience.

Please refer to our standard compression couplings for your pneumatic conveying and central vacuum requirements.



A I.D. (IN.)	B LENGTH (IN.)	C NUMBER OF HOLES	D (IN.)	E (IN.)	GAUGE
3	5	4	0.40	1.40	18
4	5	4	0.40	1.40	18
6	5	4	0.40	1.40	18
8	5	4	0.40	1.40	18