

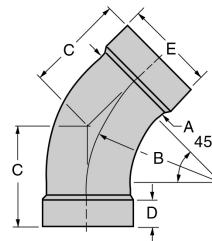
TUBE & PIPE

Vacuum Bends

Short Radius Elbows

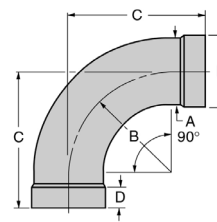
Short Radius 45° Elbows

SIZE (IN.)	A-O.D. (IN.)	GAUGE	B (IN.)	C (IN.)	D* (IN.)	E-I.D. (IN.)
3	3	16	4 ½	3 ⅞	1 ¼	3
4	4	16	6	4 ½	1 ¼	4
5	5	14	7 ½	5 ¾	1 ½	5
6	6	14	9	7	1 ½	6
8	8	14	12	10-1/16	-	-



Short Radius 90° Elbows

SIZE (IN.)	A-O.D. (IN.)	GAUGE	B (IN.)	C (IN.)	D* (IN.)	E-I.D. (IN.)
3	3	16	4 ½	6 ½	1 ¼	3
4	4	16	6	8	1 ¼	4
5	5	14	7 ½	10 ⅞	1 ½	5
6	6	14	9	12 ¼	1 ½	6
8	8	14	12	18 ¼	-	-



When ordering, specify type of material: Carbon Steel, Zinc Galv. Coated Steel, Stainless Steel, Aluminum

Bell or Straight Ends – 3" through 6". Straight ends only – 8".

D* = expanded length